

Joint Development and Implementation (JDI) Message Quality Evaluation (MQE) Tool Community Meeting

FEBRUARY 1ST, 2018

3:00PM ET



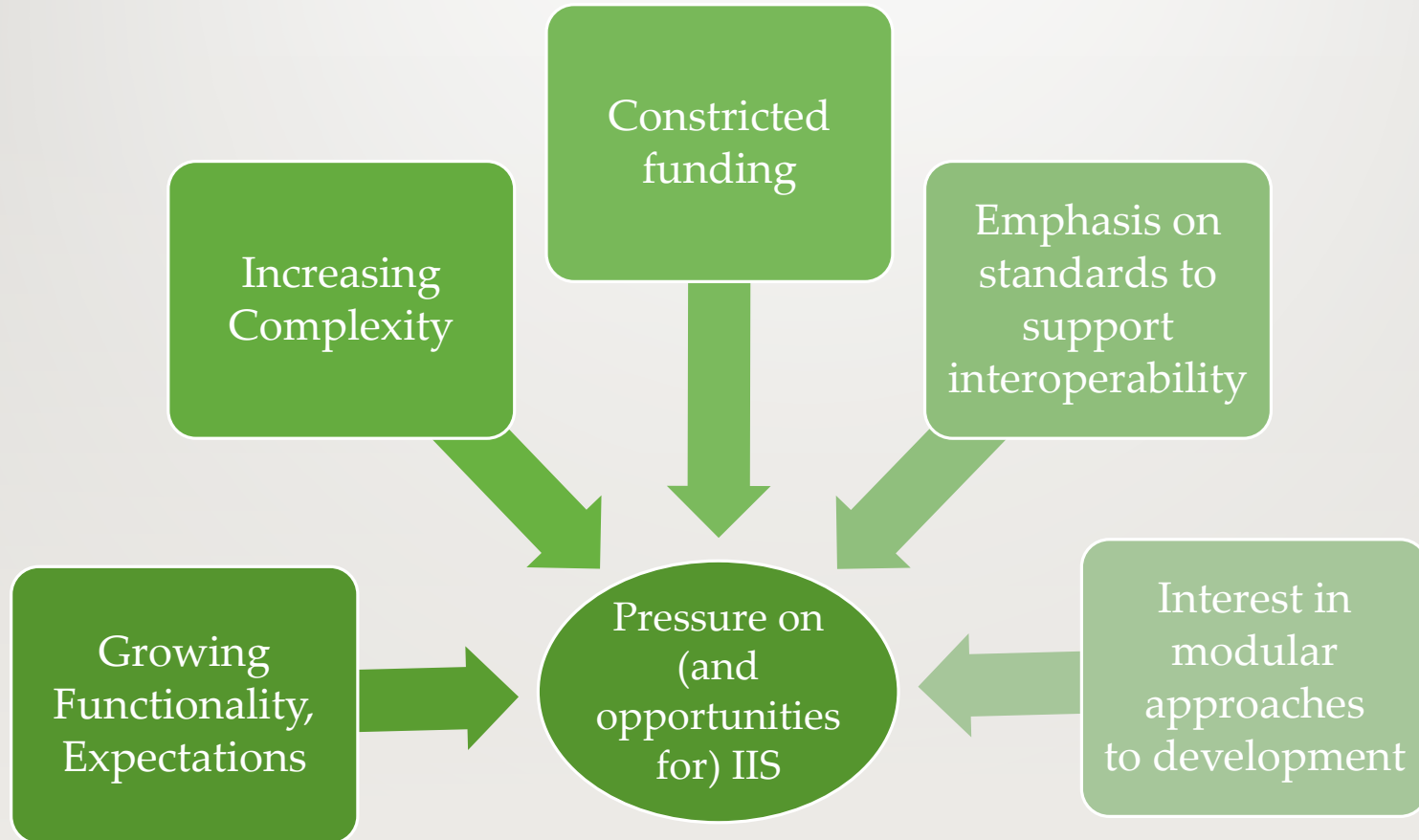
Agenda

- Opening Welcome and Project Focus
- Brief History of Message Quality Evaluation (MQE) Tool
- Demonstration of 2.5 Beta Version of Tool
- Invitation to the Community
- Next Steps, Wrap Up

Joint Development and Implementation, Defined

- A Working Definition:
 - Joint Development and Implementation (JDI) is any collaborative development or implementation of standards, business requirements, functional or system requirements, design specifications, or production of actual software tools or applications by two or more IIS/Awardees.
- Work under this initiative will extend to knowledge-sharing, joint decision-making, planning, and prioritization.
- Potentially includes shared products, (respecting licensure and contracting issues), or shared services

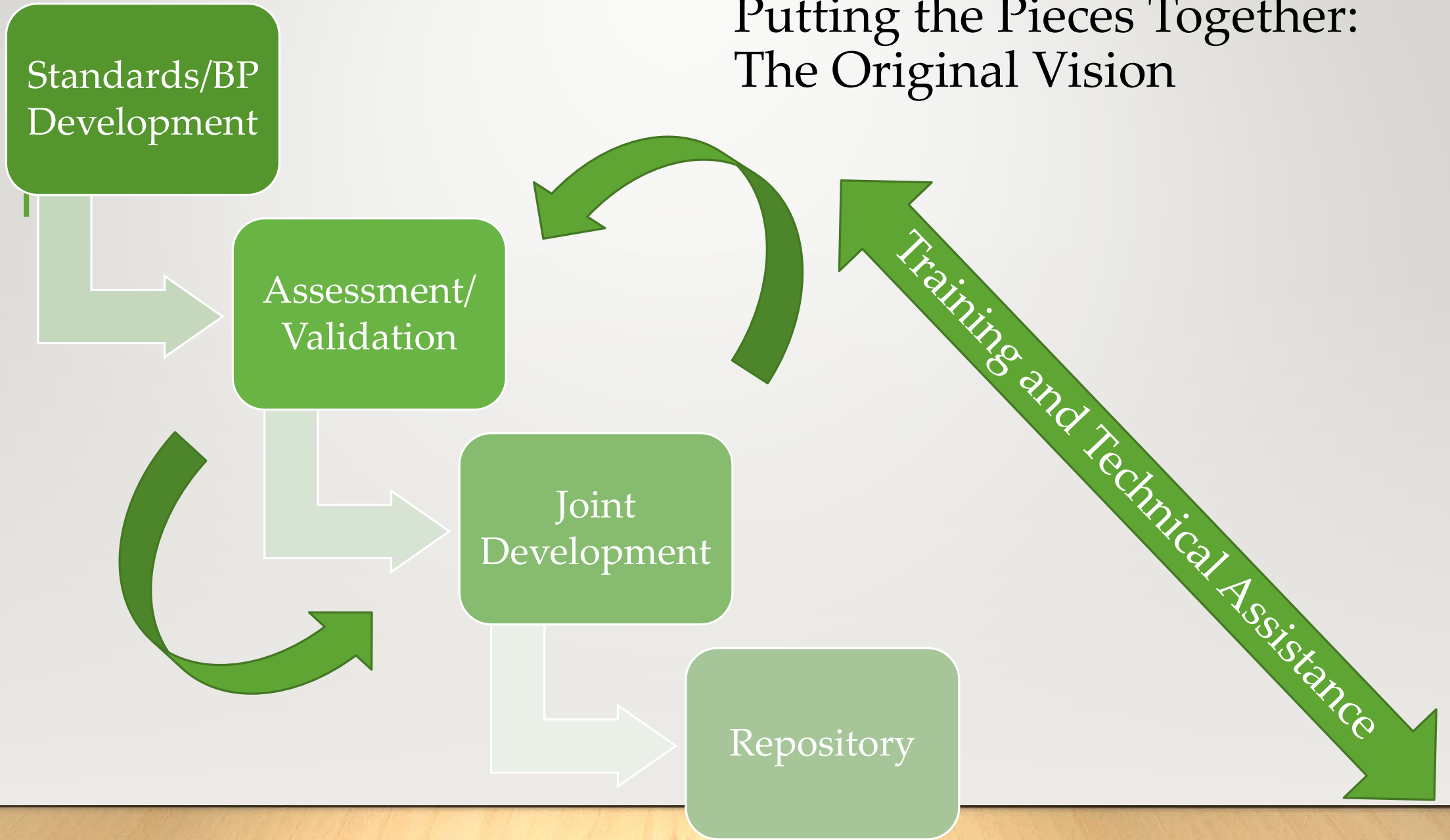
Why Did We Expand/Formalize the JDI Approach?



What is New/Different about this JDI Effort?

- Broad and representative engagement across the full IIS community
- Development of governance/decision making
- Exploration of more formal collective funding mechanisms
- Emphasis on central availability of products/services for dissemination/disposition
 - Repository
 - Open source

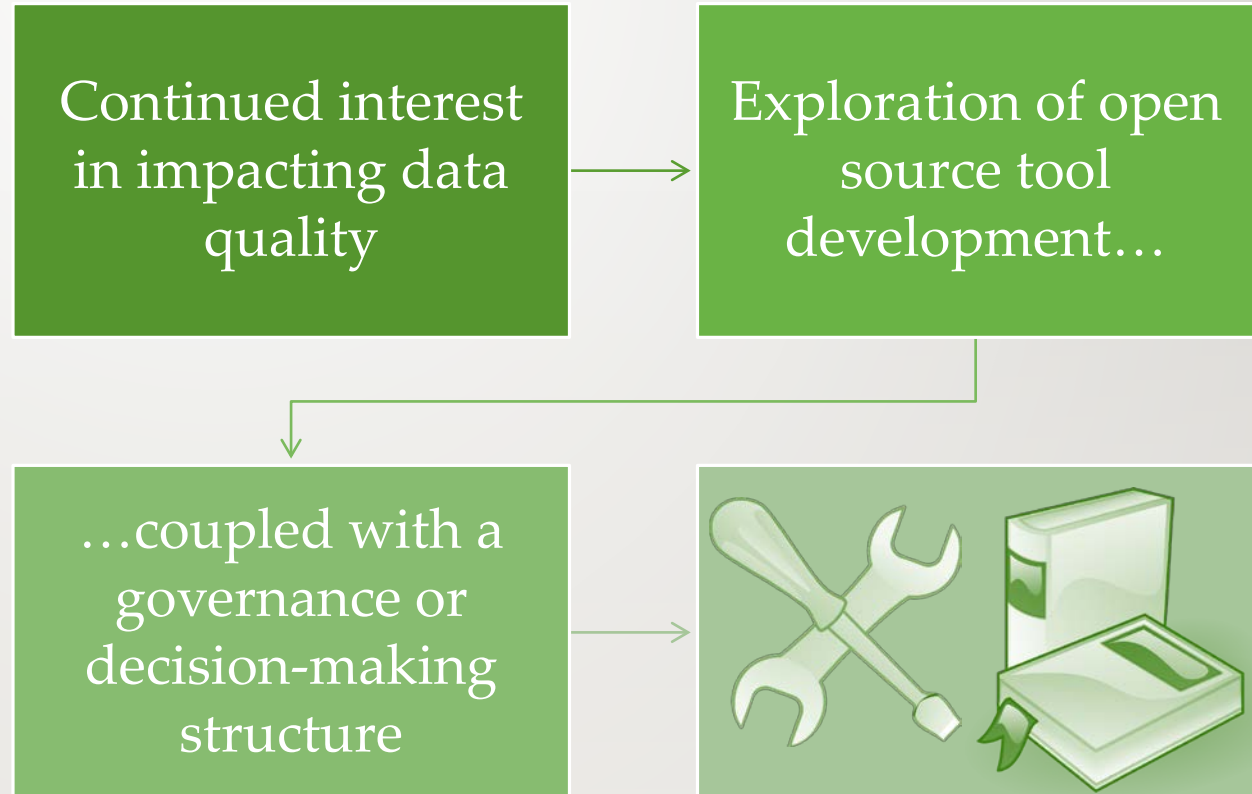
Putting the Pieces Together: The Original Vision



Project #1: Address Cleansing



Project #2: The Message Quality Evaluation (MQE) Tool

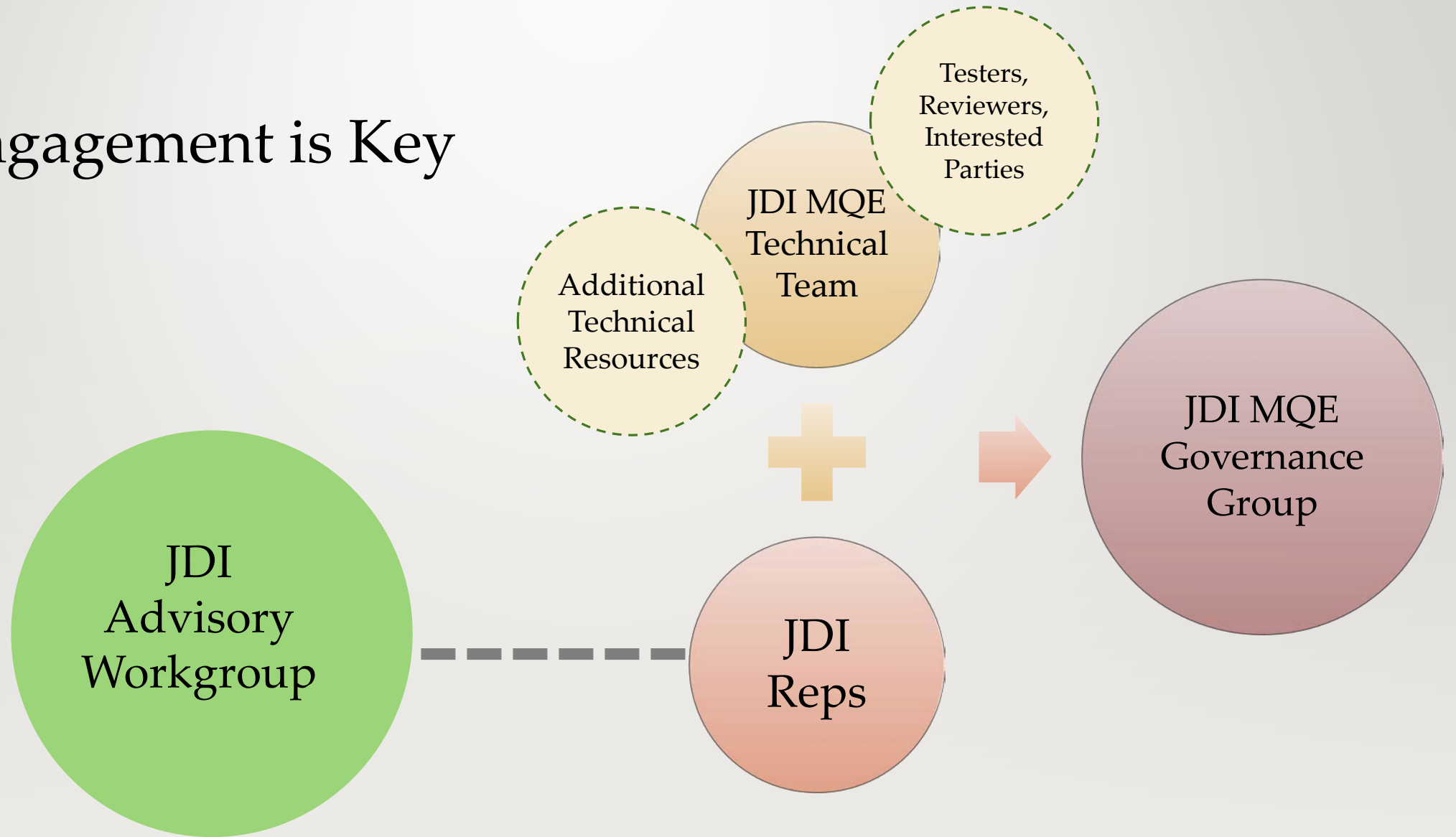


JDI MQE Governance Group Purpose

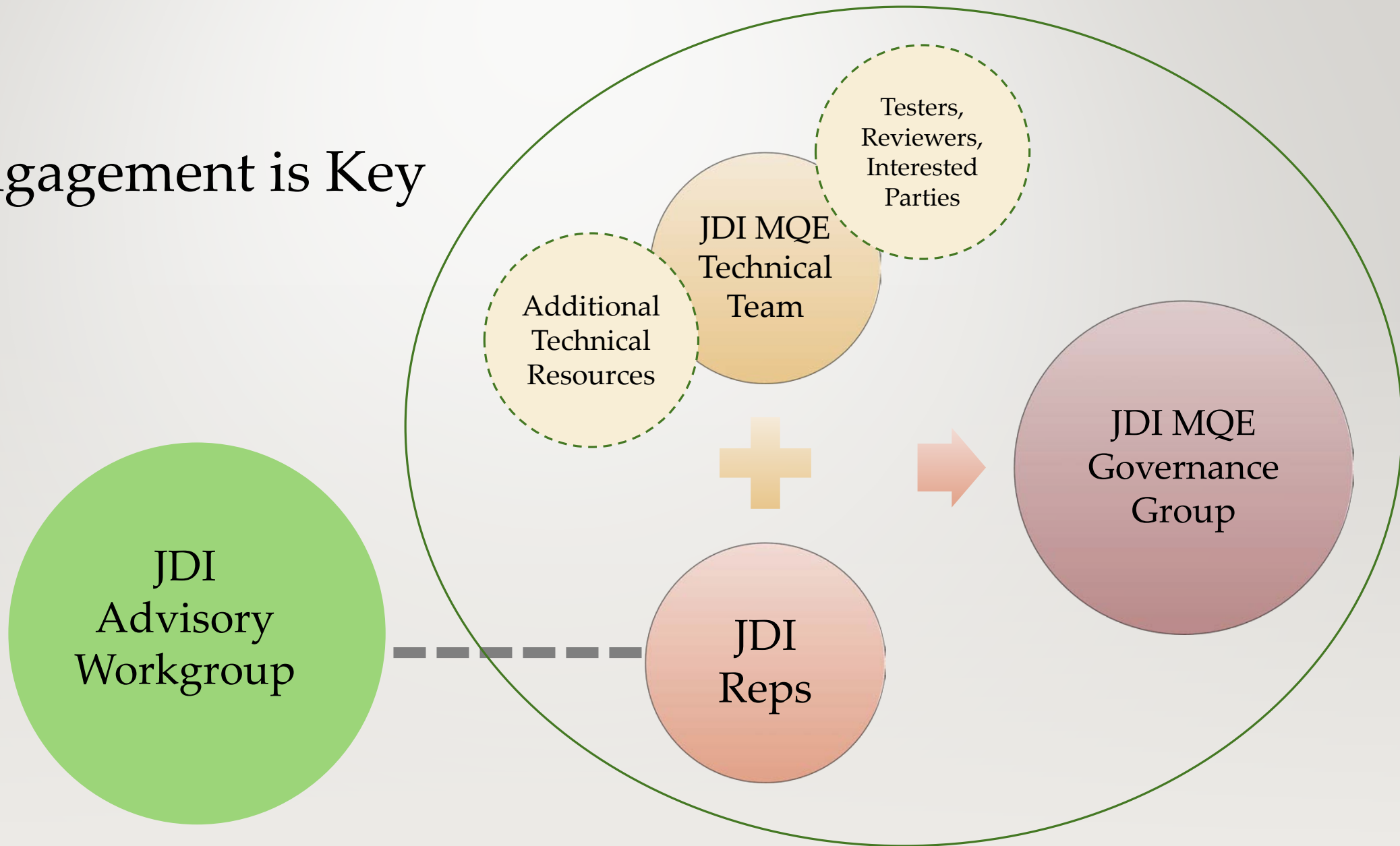
This small working group of programmatic and technical experts will develop, update, and configure the open source MQE Tool, and inform a structure and framework for decision-making to sustain the project going forward.



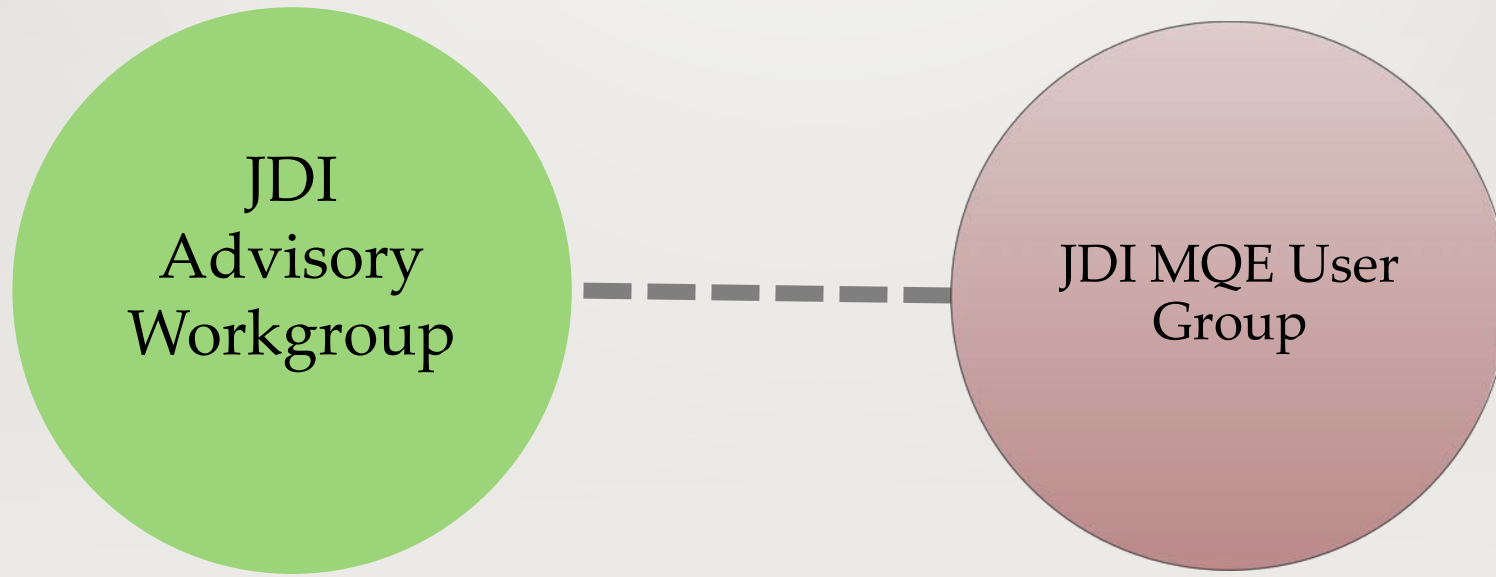
Engagement is Key



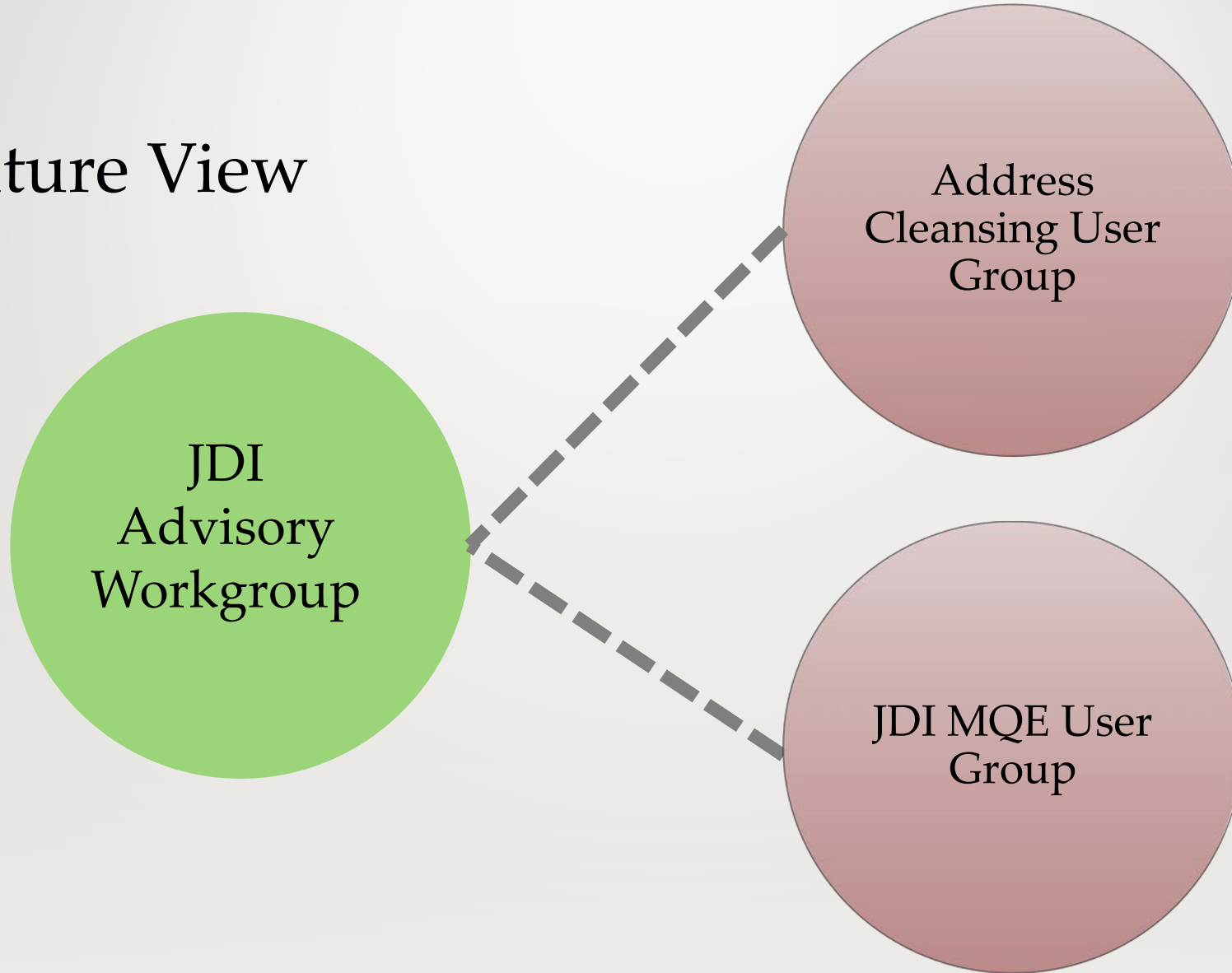
Engagement is Key



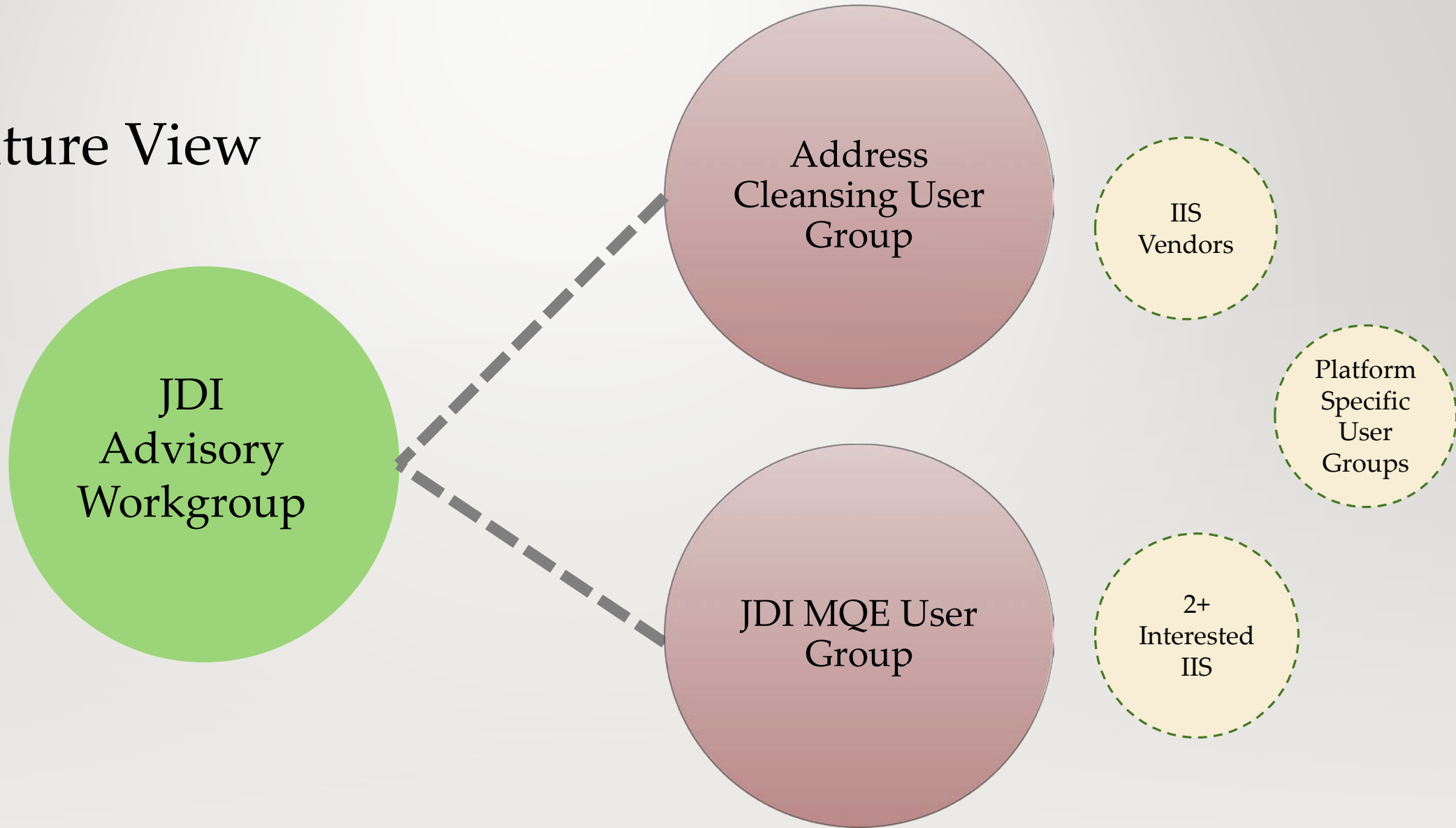
Future View



Future View



Future View





Brief History of MQE Tool

Looking back...and forward

HISTORY

- 2012 Nathan Bunker project
- Available in open source marketplace for several years, but not broadly adopted
- A small cadre of interested developers have modernized the code and expanded use

TODAY

- With JDI support, we have already organized 2 sprints to complete small improvements
- Before summer deployment, depending on interest and availability, we expect to complete additional sprints



MQE Tool Demo: 2.5 Beta Version



Invitation to the Community

How to engage

- Develop
 - Join the tech team and shape the tool
- Test
 - Make sure the tool works the way it's supposed to
- Use
 - Identify what you like and what you think can make it better
- Govern
 - Lead the project and prioritize what makes sense after AIRA steps aside

Questions for the Group

- Is this open source tool a product you might utilize/implement in your jurisdiction?
 - If not, we'd love to hear why?
- As described, does this 2.5 Beta Version do what you want/need it to do?
 - If not, what additional functions/requirements would you suggest adding into this initial version?
- What resources might your program have to bring to support completion of the initial version of this tool? (e.g., developer time, bug and pilot testing, document review, etc.)
- If you were to deploy this open source product in your program/organization, what kind of post-deployment support would you anticipate needing?

Survey to follow...



Timeline/Next Steps

Timeline

Outreach to
Immunization
Program
Managers -
after 2/8/2018

Feb. 8 2018

Respond to the
survey by
2/16/2018

Feb. 16 2018

Prioritize
requirements,
confirm
engagement by
2/23/2018

Feb. 23 2018

Convene
expanded
group by
3/2/2018

Mar. 2 2018

Next Steps

- Consider your program's need for/interest in the MQE tool
- Discuss your involvement with your leadership
- Respond to the survey by 2/16/2018 (link will be emailed as well)

www.surveymonkey.com/r/MQE



Thank you for attending!

For more information, visit the AIRA website at

<http://www.immregistries.org/initiatives/joint-development/mqe-tool> for

draft Functional Requirements and a draft Business Case document

Questions? Contact Maureen Neary, AIRA Project Manager, at

mneary@immregistries.org

