

# Project IMPACT Immunizations

**Benjamin M. Bluml, RPh**

Senior Vice President, Research and Innovation  
American Pharmacists Association Foundation

**Kelly A. Brock, PharmD**

Project IMPACT Community Coordinator  
American Pharmacists Association Foundation

AIRA IIS National Meeting

April 5, 2016 • Seattle, WA



# The APhA Foundation Mission

*To improve health by inspiring philanthropy,  
research and innovation that advances  
pharmacists' patient care services*

## Innovative Practice Models & Demonstrated Outcomes

- ✓ Adherence
- ✓ Diabetes
- ✓ Hypertension
- ✓ Alzheimer's
- ✓ Depression
- ✓ Osteoporosis
- ✓ Hyperlipidemia



# Where we're going...

- Empowered patients
- Increased collaboration
- Enhanced safety
- Improved outcomes
- Reduced costs

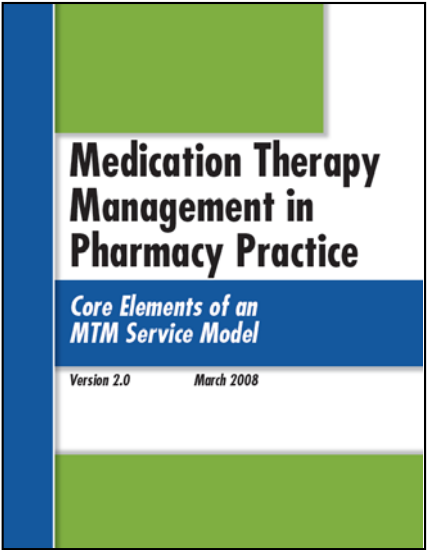
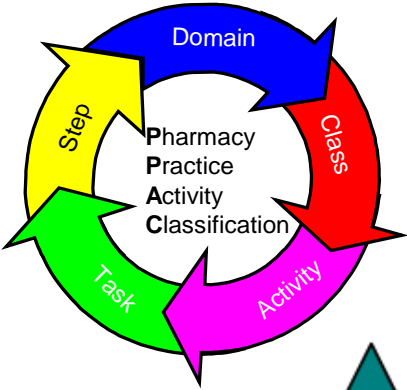
***“The best way to predict the future  
is to invent it.”      - Alan Kay***

# What's the best way to get there?

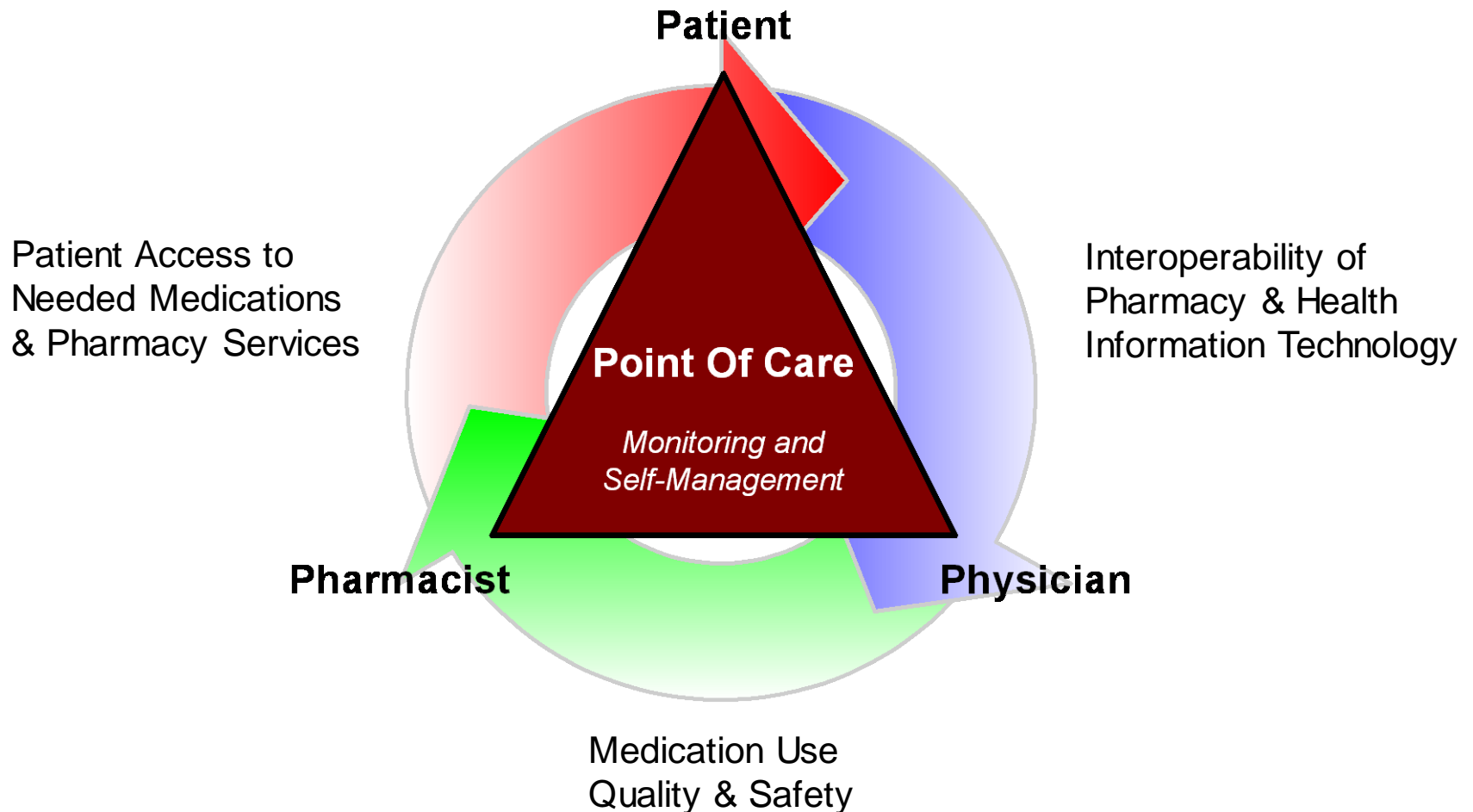
- Put patients first
- Optimize medication use
- Improve communication
- Manage information
- Increase collaboration

***“Interdisciplinary care is the best way to invent a preferred future for health care.”***

# Creating the Basis for a Preferred Future



# Inventing a Preferred Future...

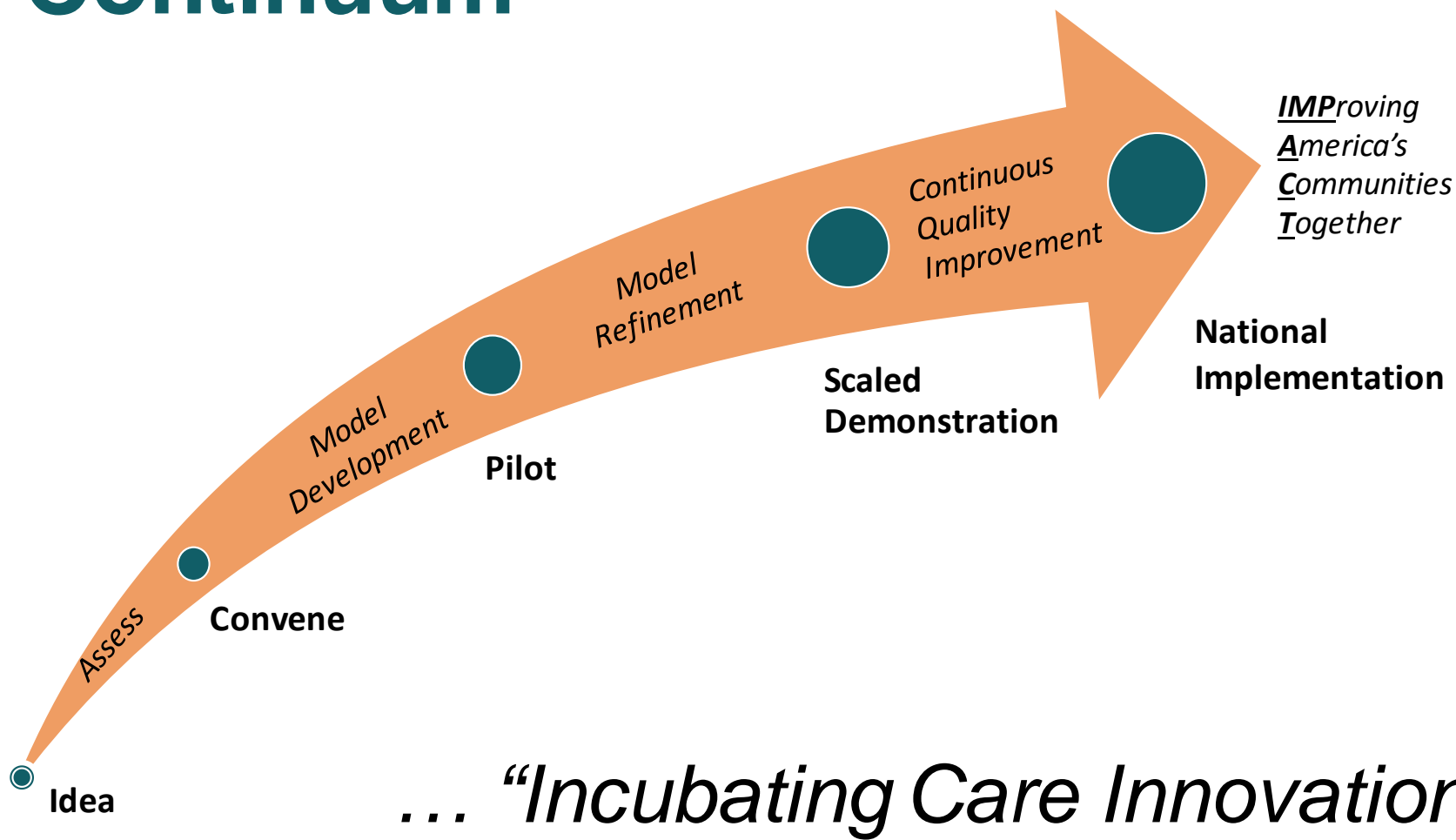


***Align the Incentives, Improve the Outcomes, Control the Costs™***

# APhA Foundation Innovation

- Continuously searches for and evaluates the next innovation that will improve people's health through pharmacists' patient care services
- Explores ideas for new areas of pharmacy practice
- Engages with top thought leaders to discuss future practice innovation

# Our Research and Innovation Continuum

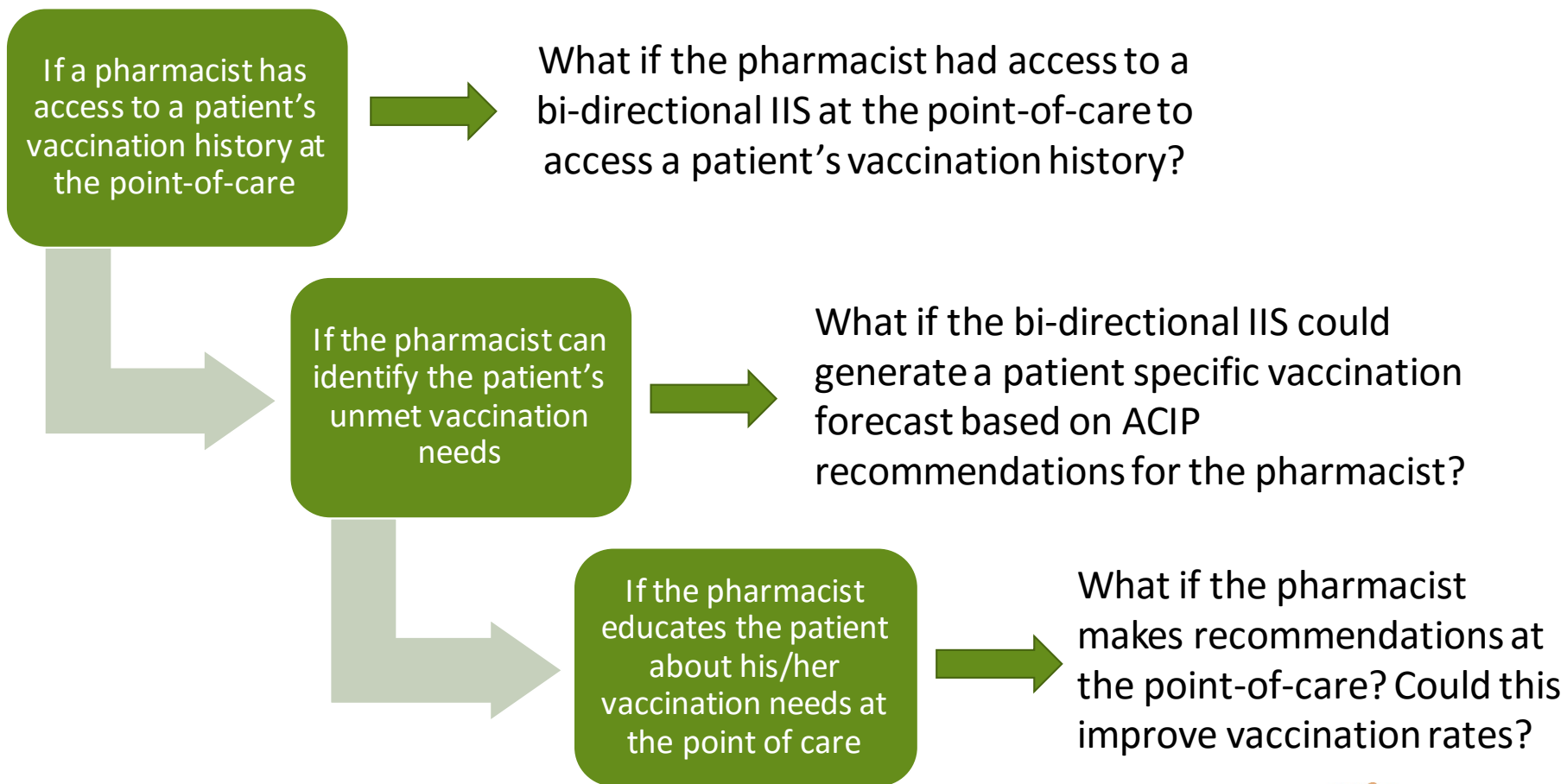




# Project IMPACT Immunizations

- In early 2015, SVP of APhA Foundation facilitated a convening activity with key stakeholders in Washington State with support from STC where the discussion centered on how to improve vaccination rates
- Stakeholders identified a valuable opportunity to test an innovative practice model that could help pharmacists increase adult vaccination rates

# Project IMPACT Immunizations Care Innovation



# Inventing a Preferred Future

***“Collaborate with your pharmacist to invent a preferred future.”***

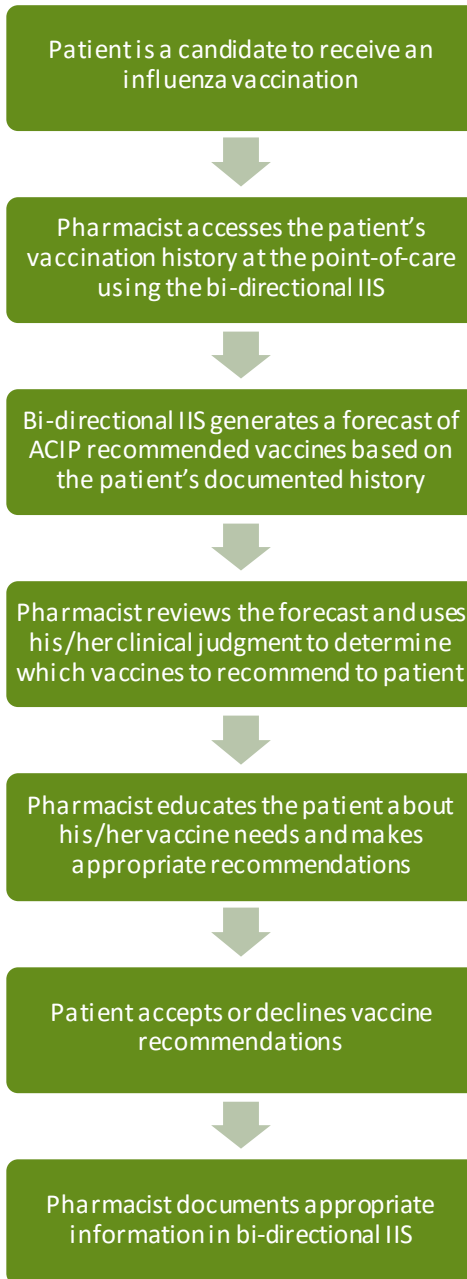
**- Benjamin Bluml, R.Ph. [bbluml@aphanet.org](mailto:bbluml@aphanet.org)**

# Project IMPACT Immunizations Pilot Project

- Primary Objective

To evaluate how implementing an innovative care model that provides the pharmacist access to a patient's vaccine history at the point-of-care impacts the pharmacist's ability to identify unmet vaccination needs and increase vaccination rates for routinely recommended adult vaccinations

## Project IMPACT Immunizations Innovative Care Model Process of Care



# Pharmacy Partners

Partner	Location	Geographical Location
Quality Food Centers #101	Belfair	Located on the Union River, connecting the Kitsap and Olympic Peninsula
Quality Food Centers #851	Edmonds	North of Seattle
Kelley-Ross Pharmacy	Seattle	Seattle
Kirk's Pharmacy	Eatonville	South of Tacoma; west of Mount Rainier
Tieton Village Drug	Yakima	Central Washington
Cheney Owl Pharmacy	Cheney	South of Spokane
ReliantRx	Spokane	Spokane
Lopez Island Pharmacy	Lopez Island	Island off the coast of Washington

# Technology Partner Scientific Technologies Corporation



- ImmsLink:  
bi-directional  
immunization  
interface implemented  
in each pharmacy



- Allowed pharmacist to access the patient's vaccination history at the point-of-care
- Generated a patient-specific forecast of ACIP recommended vaccines based on the patient's documented history
- Allowed pharmacist to document care and report to IIS

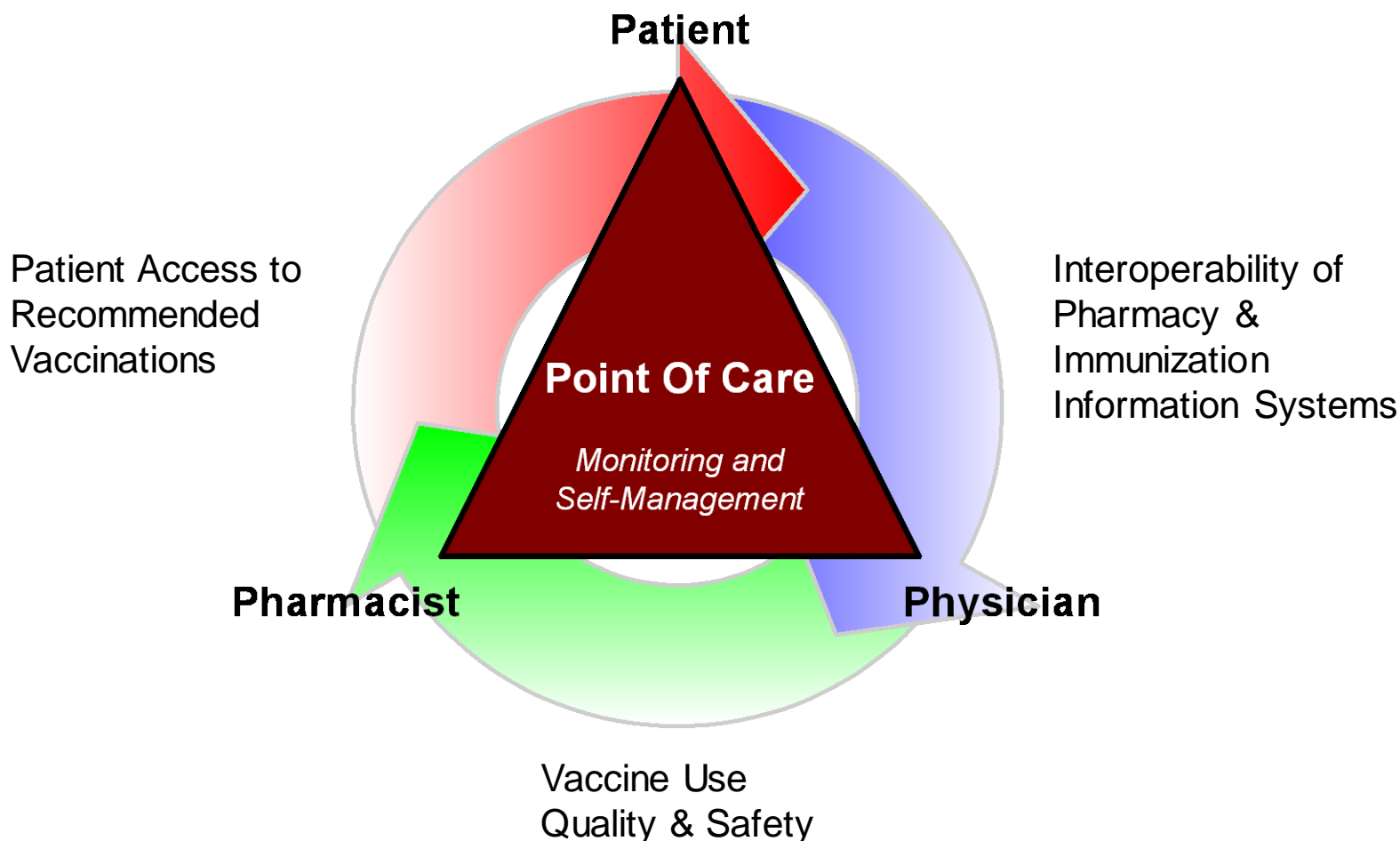
# Project IMPACT Immunizations

## Lessons Learned

- Increased availability of actionable information at the point-of-care allows pharmacists to identify and address unmet vaccination needs
- Increased utilization of a bi-directional immunization information system enhances interprofessional collaboration and communication between and among patients/providers



# Inventing a Preferred Future...



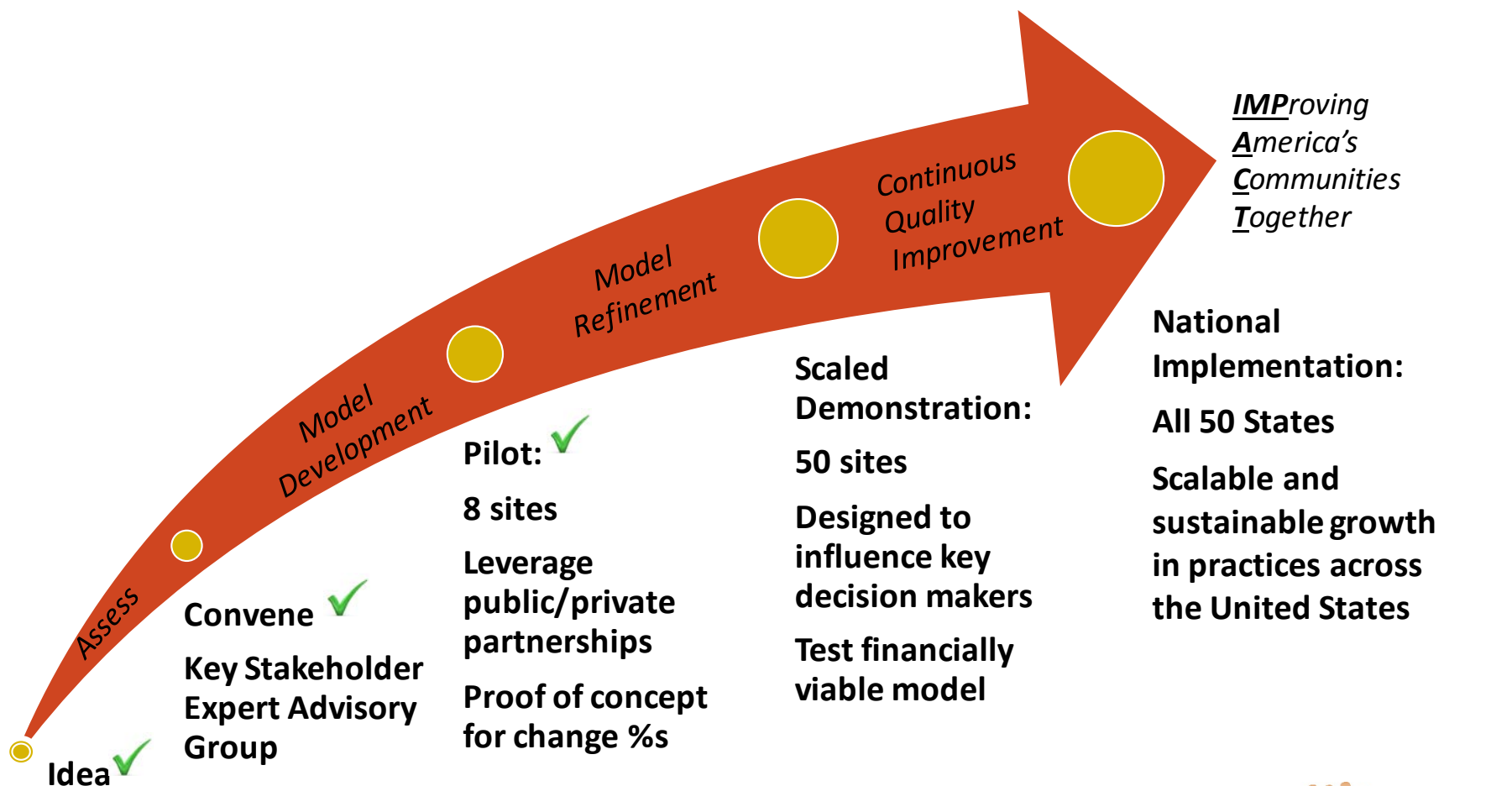
***Align the Incentives, Improve the Outcomes, Control the Costs™***

# Acknowledgements

- Key stakeholders at the convening activity in Washington State that strengthened our beliefs
- Key partners
  - 8 pharmacies who are participating in the pilot project
- Key support
  - Washington State Pharmacy Association
  - Scientific Technologies Corporation (STC)
- Key funding from Merck
  - To support the pilot project to test the innovative practice model

# Project IMPACT Immunizations

*...Addressing Population Health for Preventable Diseases*



# Project IMPACT Immunizations

Questions?