

# *The* QUERY QUANDARY

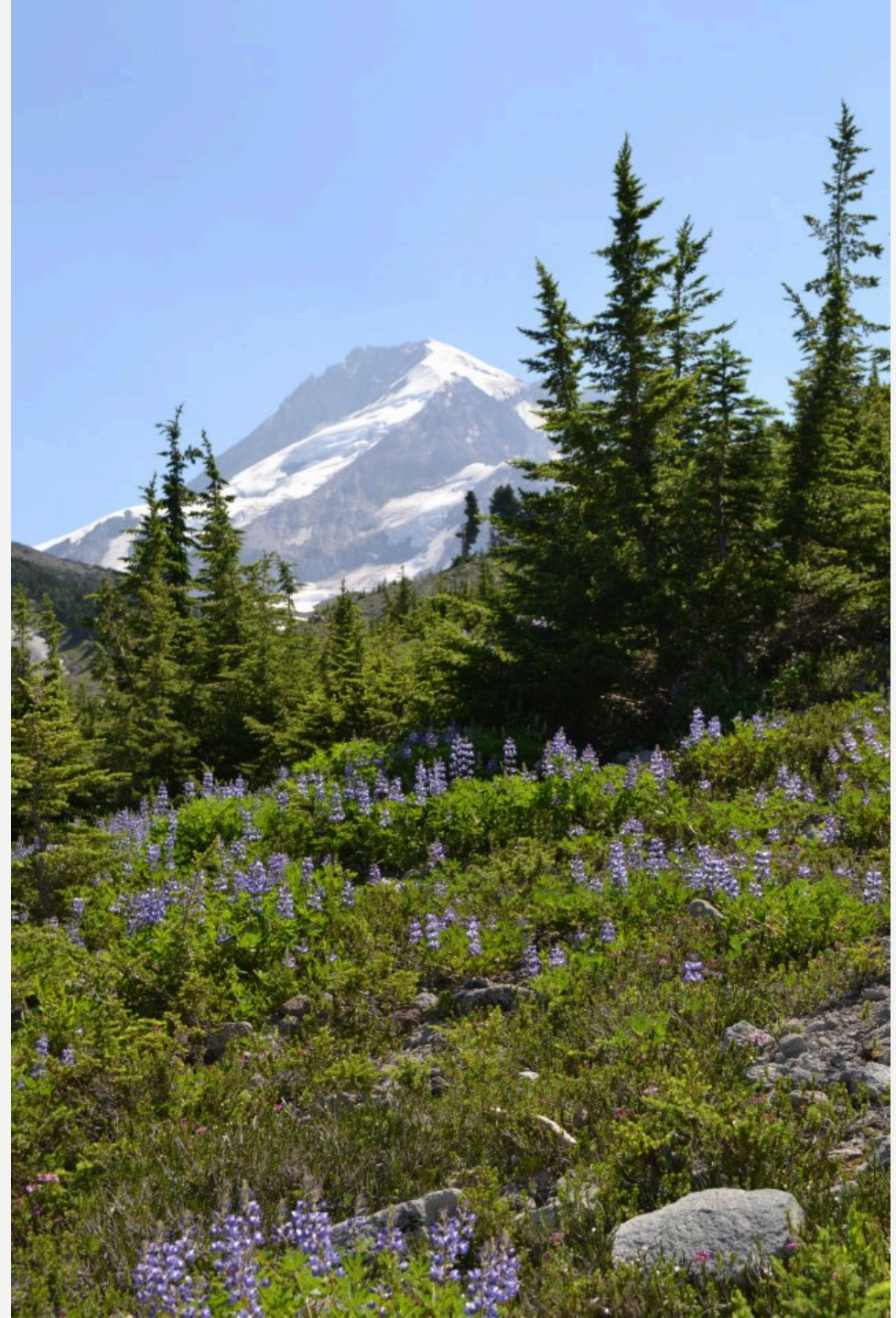
**YOUR DATA HAS LEFT THE  
BUILDING, NOW WHAT?**

**Tracy Little**, *Data Exchange Analyst*

**Deborah Richards**, *Data Quality Coordinator*

ALERT IIS

Oregon Immunization Program





# THE OREGON STORY

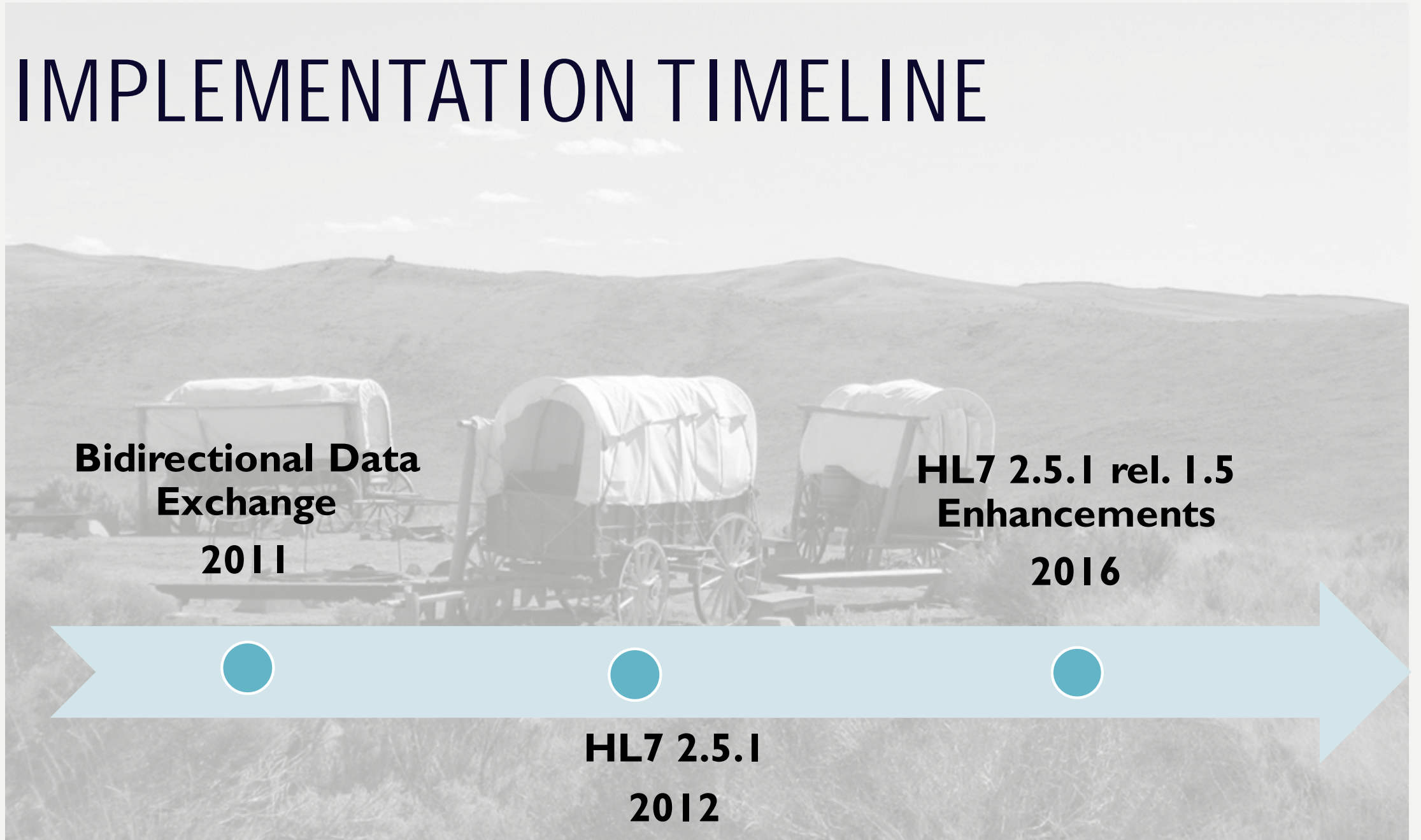


# IMPLEMENTATION TIMELINE

**Bidirectional Data  
Exchange  
2011**

**HL7 2.5.1  
2012**

**HL7 2.5.1 rel. 1.5  
Enhancements  
2016**



- Count of bidirectional Interfaces = 468
  - Facilitated by 17 sending orgs/vendor hubs
- EHRs sending queries:
  - Epic
  - GE Centricity via ImmsLink & STC
  - athenahealth
  - Cerner

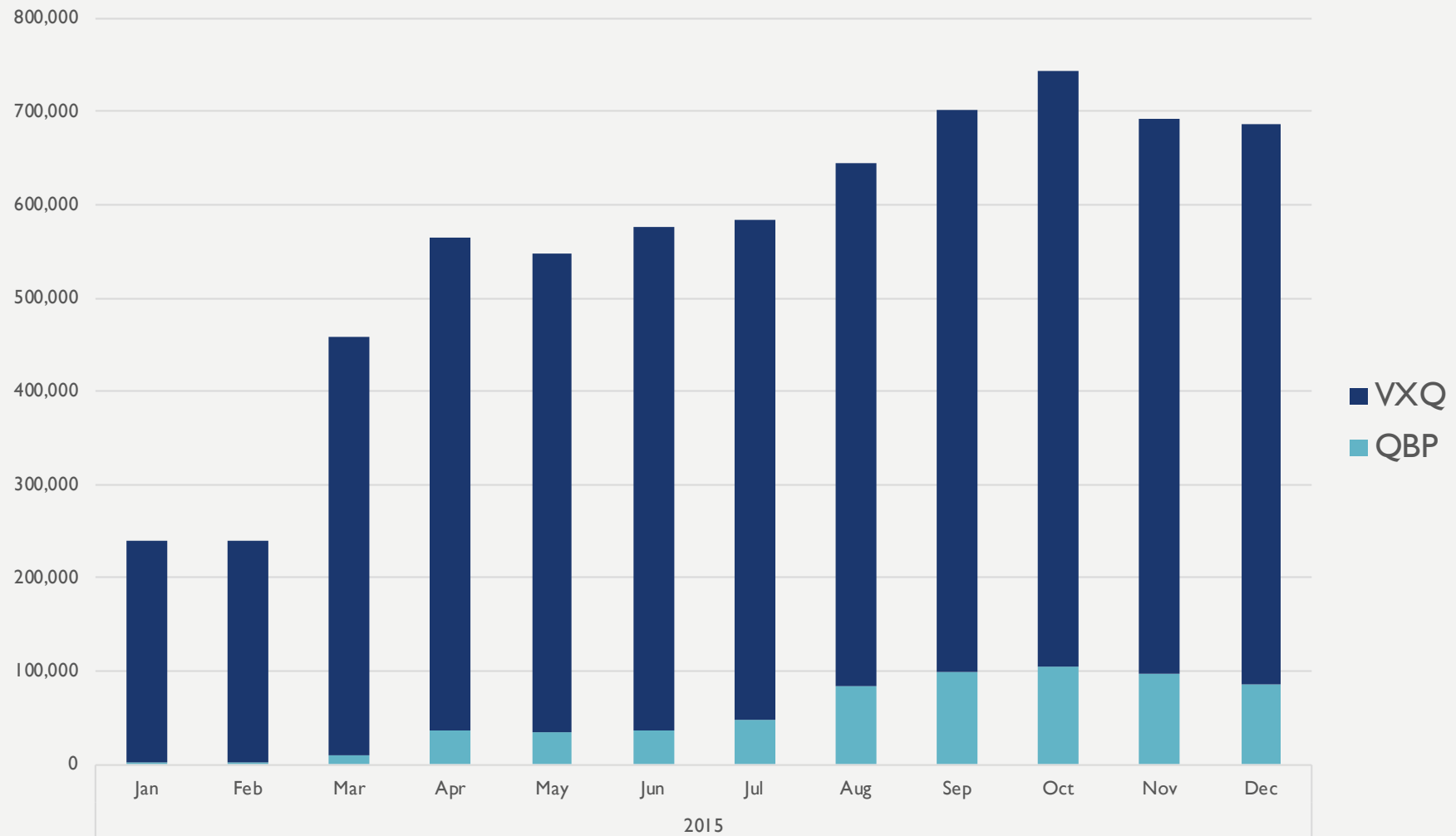
# OTHER INTERFACES

WASHINGTON STATE —  
**IMMUNIZATION**  
— INFORMATION SYSTEM

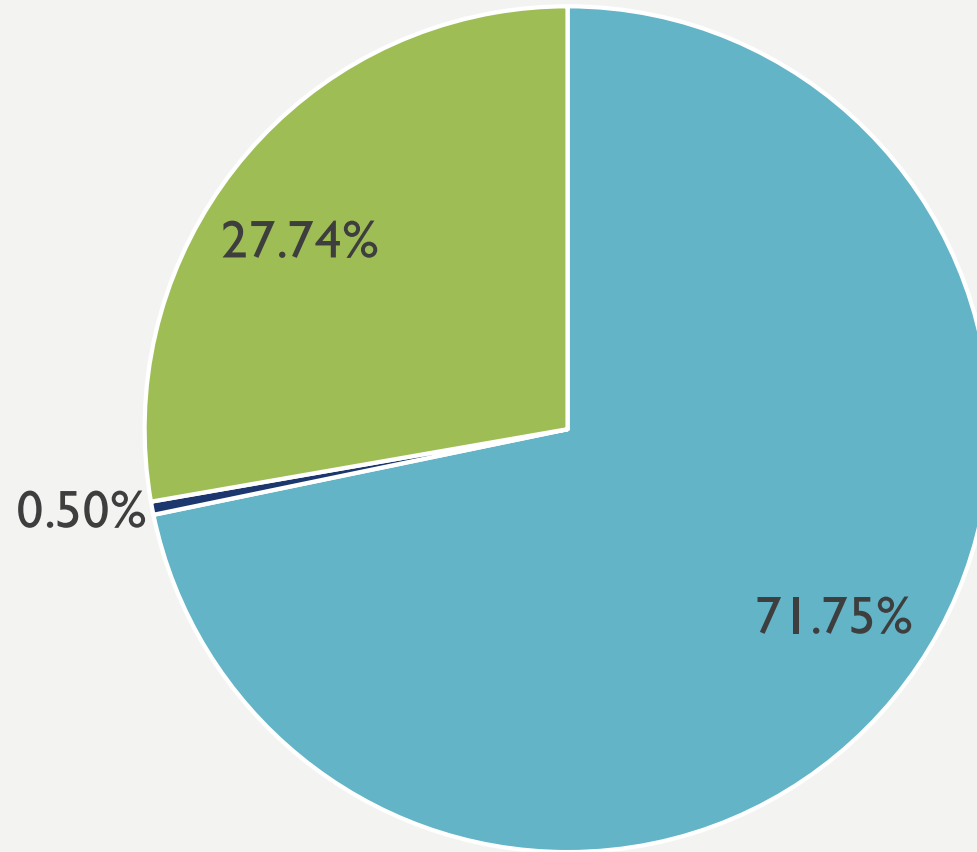
*Every age. Every vaccination.*



# COUNT OF QUERIES, BY MONTH FOR 2015



# % OF RESPONSES BY TYPE



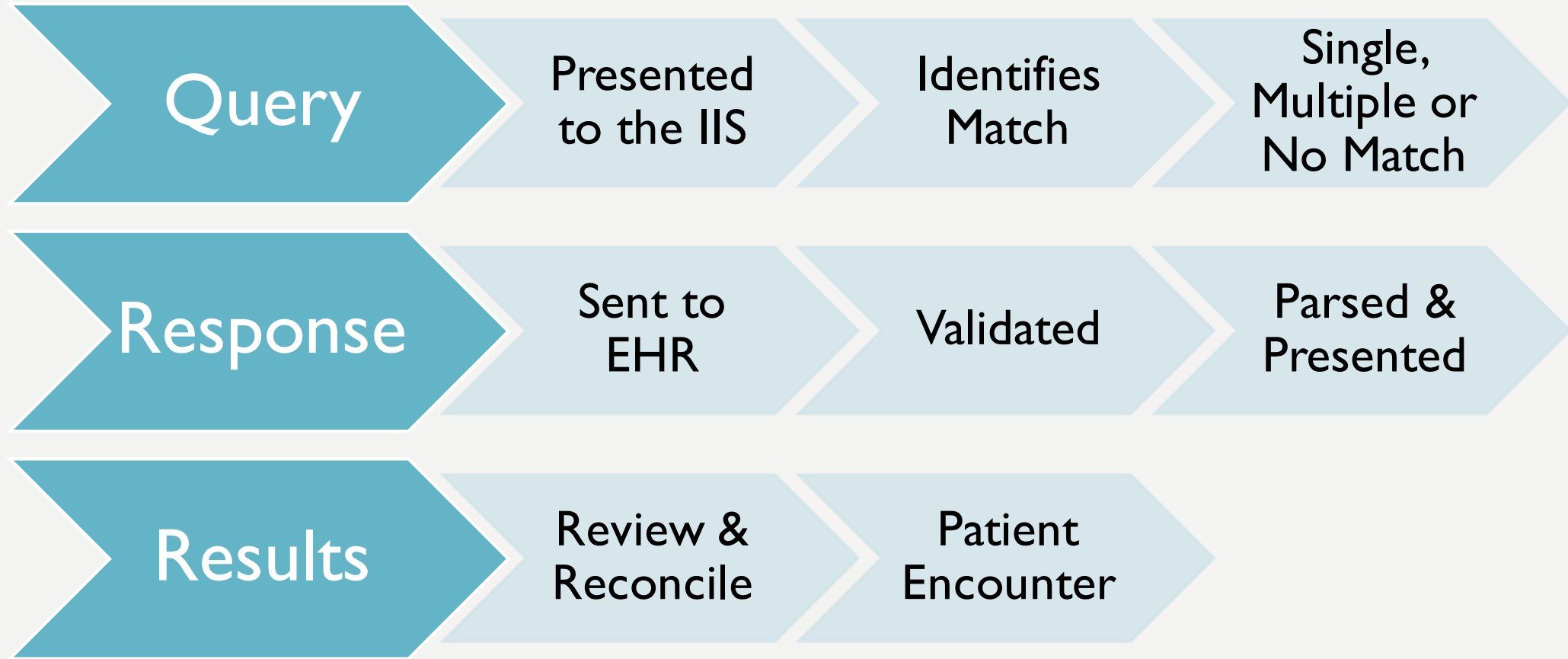
■ Single Match

■ Multiple Match Found

■ None Found



# QUERY PROCESS



# TESTING & ONBOARDING



# WHAT OUR PARTNERS ARE DOING

Query messages are triggered from the provider's EHR to the IIS:

- ✓ Automatically at patient check-in
- ✓ Manually from EHR during patient visit, at point-of-care, check-out
- ✓ Manually prior to patient visit, during scheduling

Most EHRs are parsing all possible query response options:

- ✓ single match found
- ✓ multiple matches found
- ✓ none found

Query match is successful:

- ✓ The immunization history is presented on screen
- ✓ The immunization history is presented for reconciliation by the clinician
- ✓ The forecast is presented on screen or in the EHR

Note:

Some EHR interfaces will further validate the returned patient against the query. This may result in the returned match not being accepted on the provider side.

# FROM OUR PARTNERS: CHALLENGES

We need a coding solution for processing messages indicating the IIS is unavailable.

How do we adjust clinical workflow?

Do we choose to use the forecast from the IIS, or the one in the EHR?

How do we ensure that local data is not overwritten by IIS data?



# CONSIDERATIONS

- ✓ Know your limits!
  - ✓ Processing bandwidth
  - ✓ Triggers
- ✓ Query matching vs IIS matching rules
- ✓ Testing, initial and ongoing
- ✓ Prepare for questions/support



# CONSIDERATIONS

- Standards and best practices are needed, for testing/onboarding, and monitoring query interfaces
- Communication between IIS and partners to notify of issues/challenges, etc.
- Access to records; who is querying whom?
- Shared responsibility for monitoring interfaces

# LOOKING AHEAD...

- ✓ Leveraging query messaging with non-traditional data partners
  - ✓ Query-only partners such as WIC, OR-Kids, EHDI
  - ✓ Secondary-source partners such as health plans, HMOs, etc.
- ✓ Future enhancements
- ✓ Meaningful Use Stage 3 – what impact will this have on IIS?



Questions?

Tracy Little, Data Exchange Analyst

[tracy.c.little@state.or.us](mailto:tracy.c.little@state.or.us)

Deborah Richards, Data Quality Coordinator

[deborah.Richards@state.or.us](mailto:deborah.Richards@state.or.us)