

Applied Use of Bi-Directional Exchange in Walmart Pharmacies

Kristen Hutchinson – Walmart

Brandy Altstadter – STC

Walmart & Immunizations

2012 and earlier Flu Seasons

- Community immunizers
- Nurses administer immunizations at a separate table in the store

2013 Flu Season

- Immunizations now received in the pharmacy
- Partial rollout, where compliance requirements were fully met

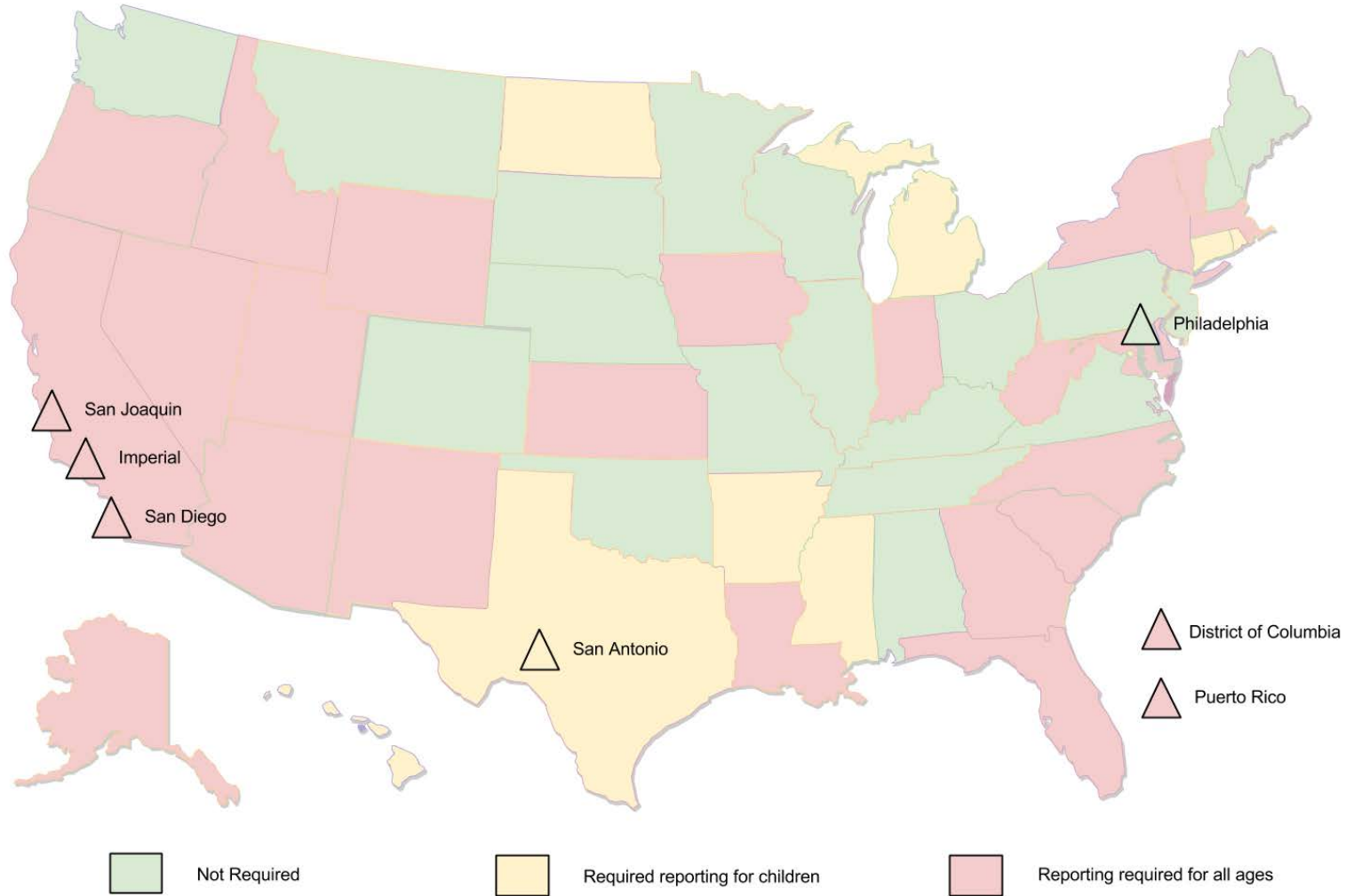
2014 Flu Season

- Full pharmacy immunization rollout to all states
- Initial expansion to immunizations for patients under 18 years old
- Registry reporting in required reporting states

2015 Flu Season

- Full implementation of pharmacy immunizations in all states and all ages (based on state legislation)
- Registry reporting in all states

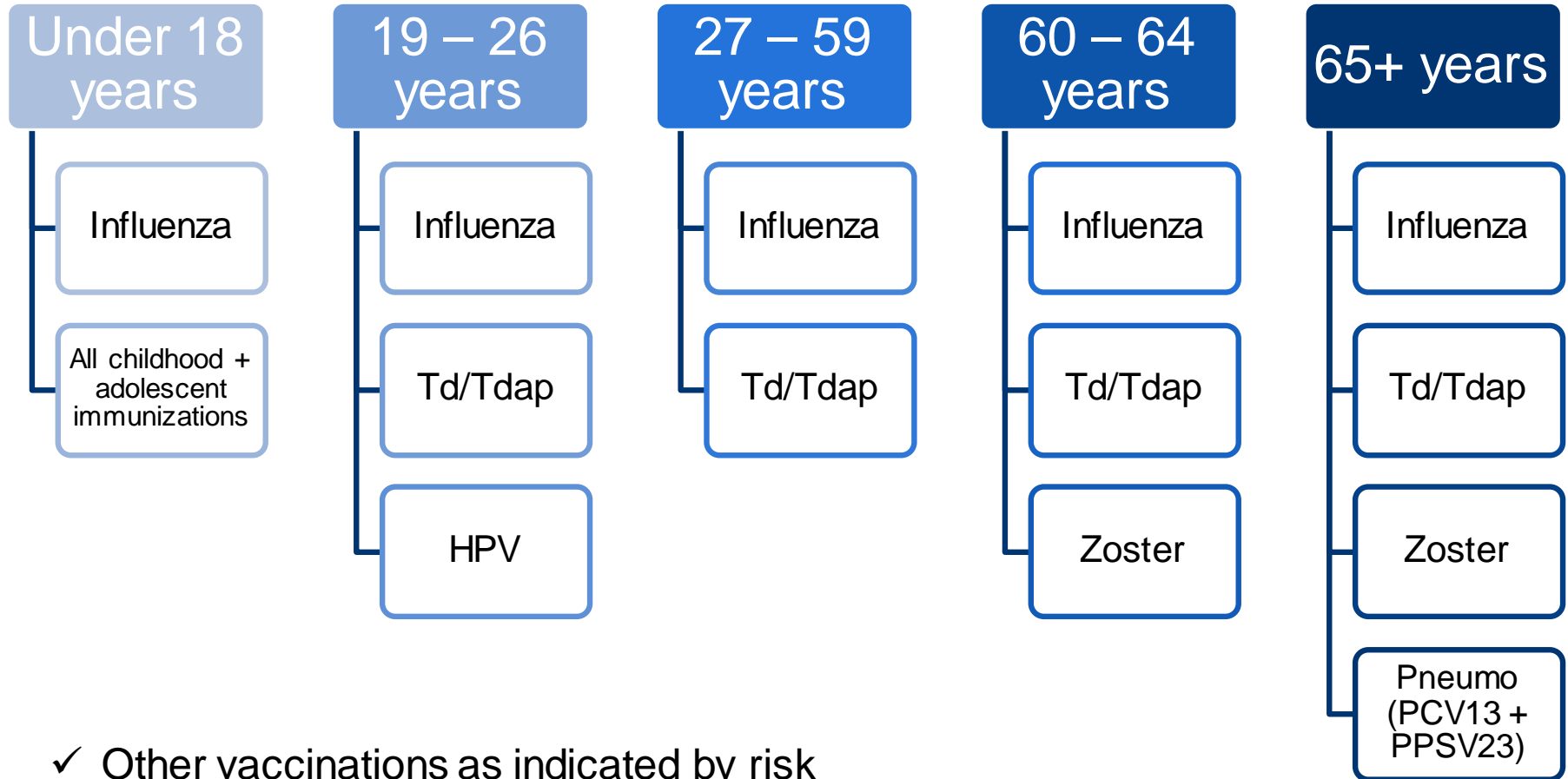
IIS Required Reporting States



Walmart's uni-directional connections

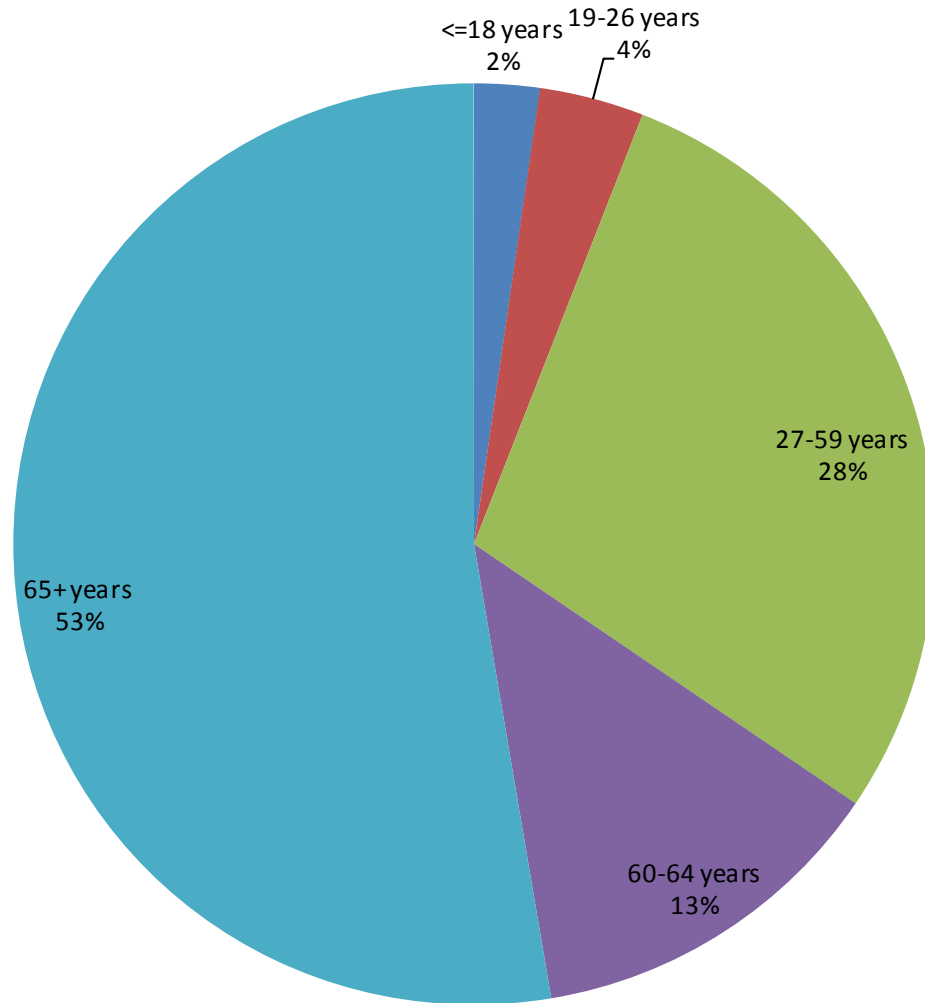
- Sending production data via HL7 in almost all required reporting states
 - Small number of exceptions related mostly to state on-boarding queues
- Actively working with remaining states
 - Many are in production
 - Others in various stages of testing
- Target: All states enabled by August 2015 (flu season)
 - Will be sending data to all states regardless of required reporting policies

Vaccinations Typically Administered



✓ Other vaccinations as indicated by risk factors (medical, occupational, etc.)

Pharmacy Profile by Patient Age



Pharmacy Profile by Vaccination Type

2011

2014

Flu – 95%+

Zoster +
Pneumo -
<5%

Flu – 70-
80%

Zoster,
Pneumo,
Tdap,

HepB, and
More --
>20%

Why is bi-directional access important?

Stay Compliant

- Required in the following jurisdictions: Oregon, Iowa, North Carolina, Michigan (June 1, 2015)

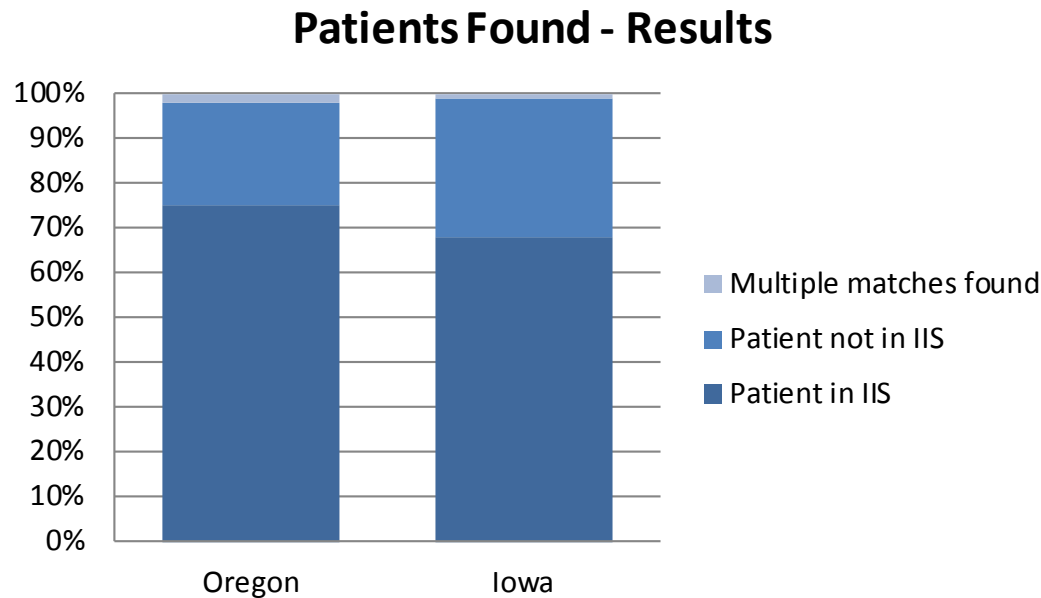
Improve Patient Engagement

- Serves as a tool in counseling patients on immunization recommendations
- Complete record for patients to manage their records for school entry, employment, etc.

Coordinate Care

- Fully participate in information sharing between health care providers
- Improves communication between the provider/pharmacist and the patient

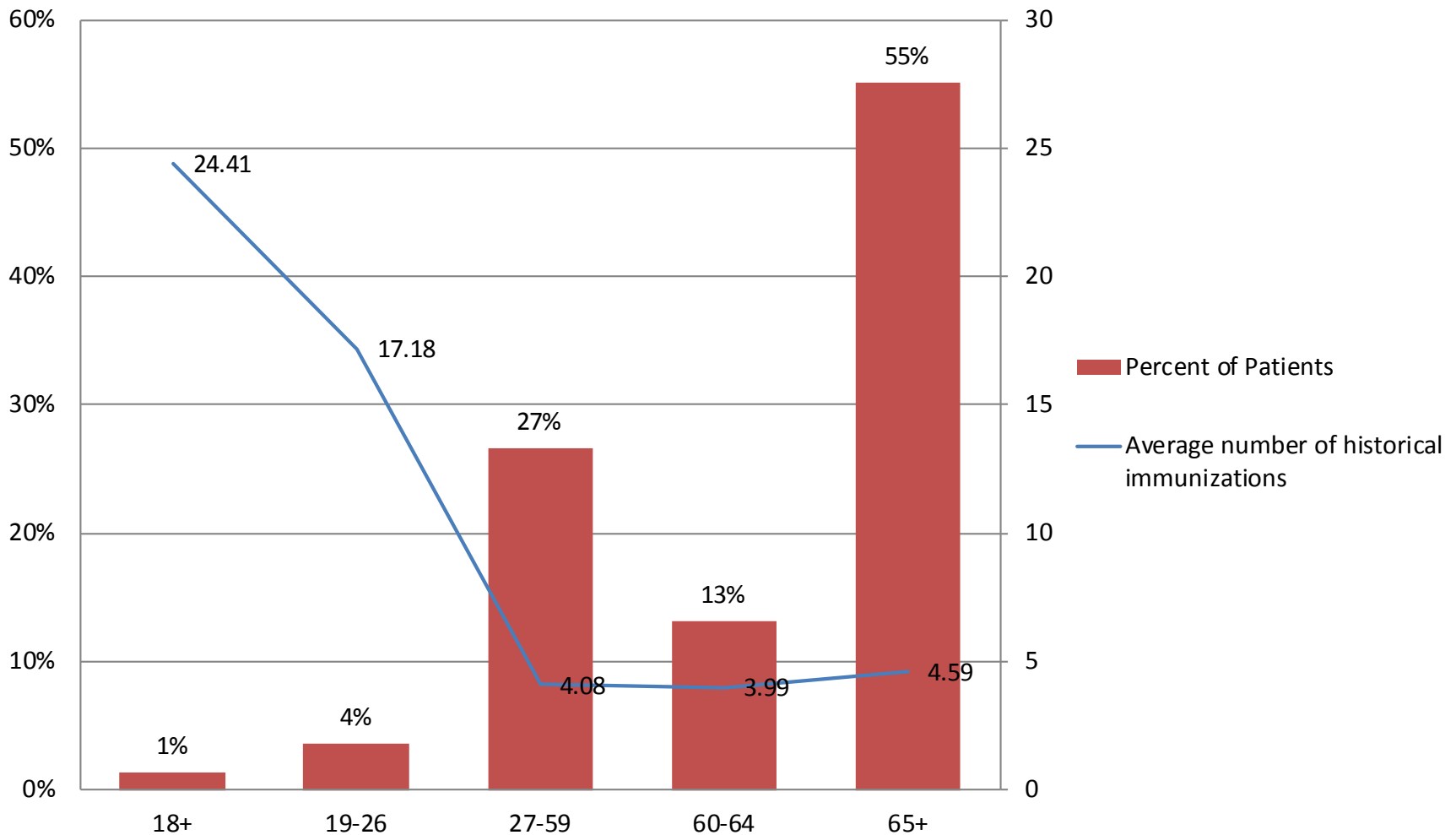
Are patients found?



- Approximately 70% of the patients are found in the registry
- Only 1-2% return multiple matches and require additional review

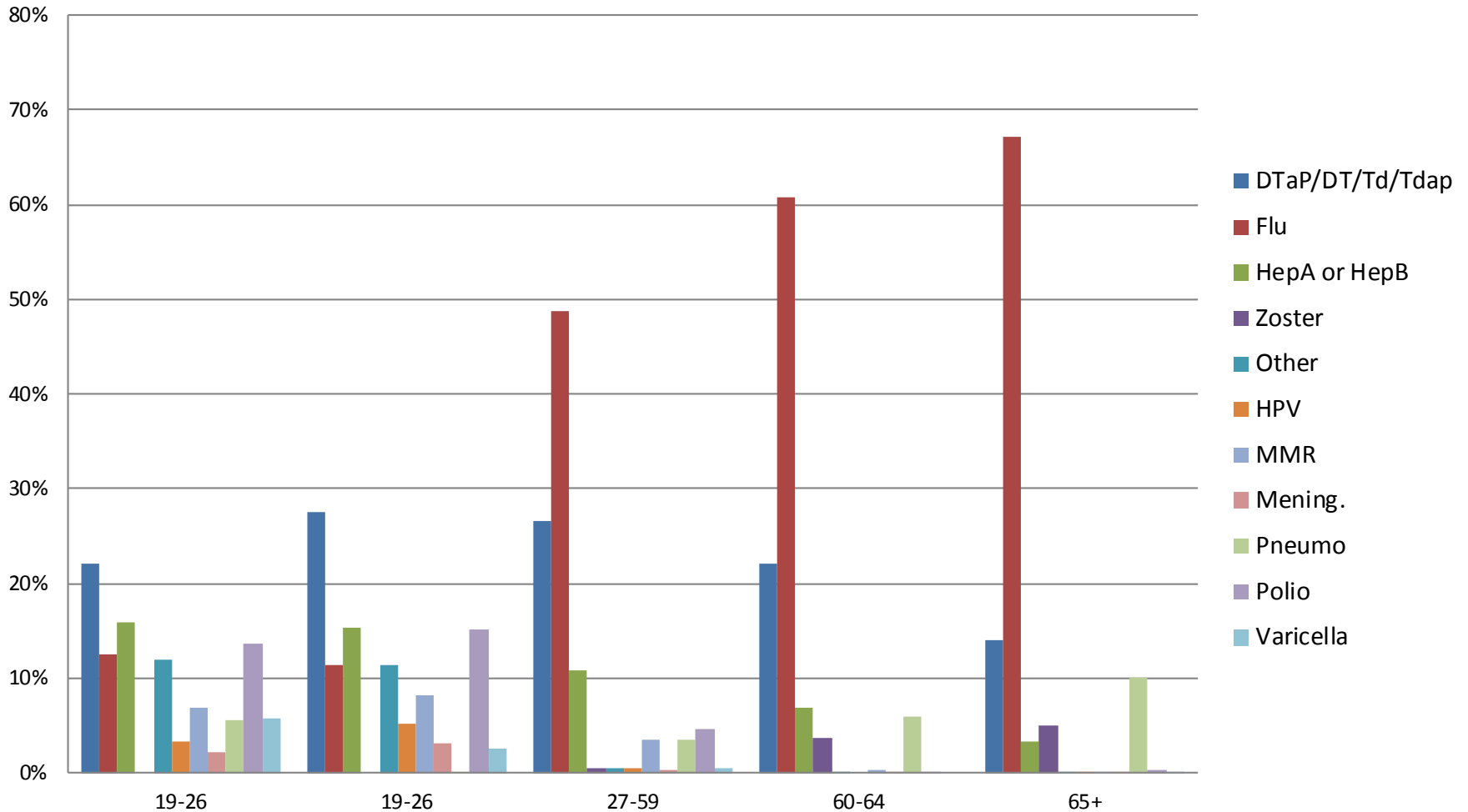
How complete are the records?

Number of Vaccinations Returned by Age



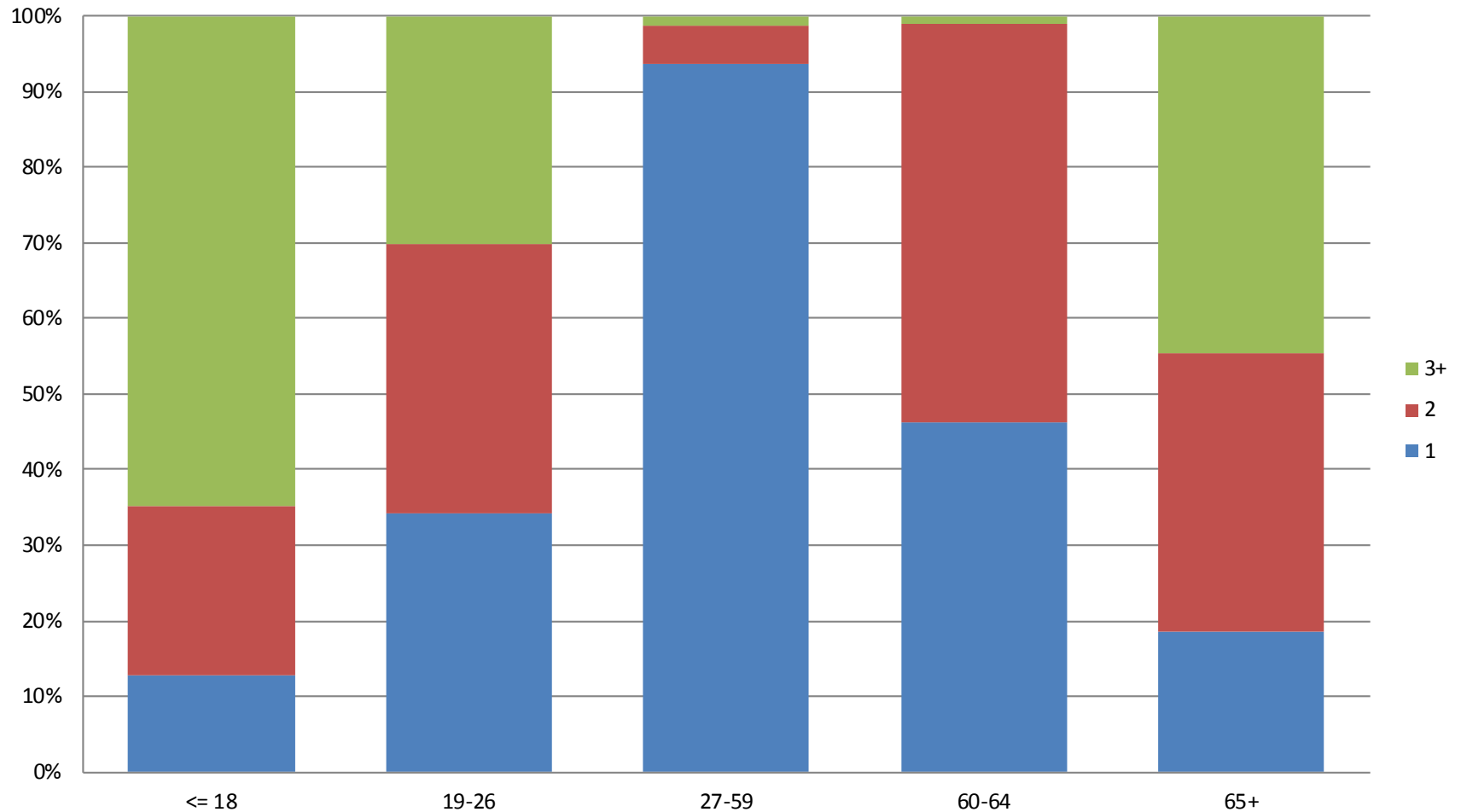
What does the data look like?

Types of Vaccinations Returned



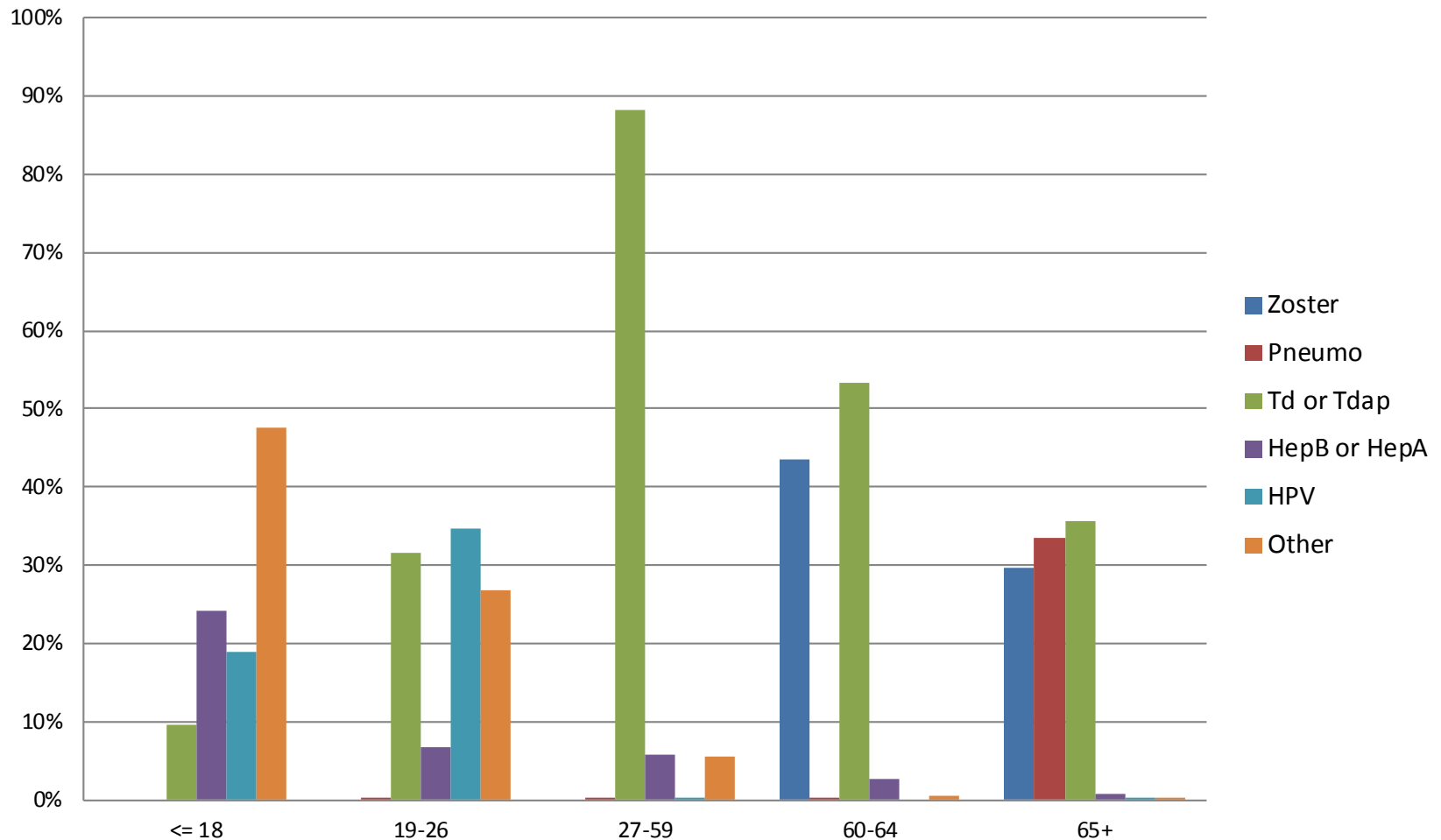
How many immunizations are due?

Vaccinations Due By Age



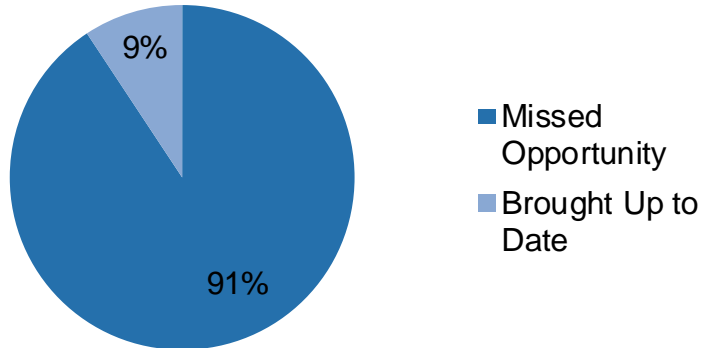
Which types of immunizations are due?

Vaccinations Due by Type



Wealth of Opportunity

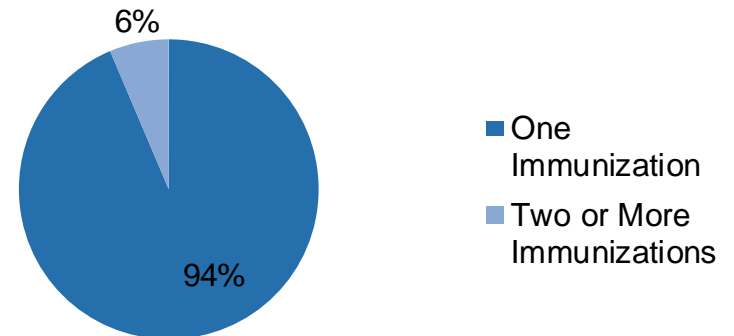
Opportunities



- ✓ Most adult patients who receive pharmacy immunizations are still due for one or more immunizations

- ✓ Most adult patients who receive pharmacy immunizations only receive one immunization

Multiple Immunizations per Visit



IIS Takeaways

- IIS provides a lot of value to providers and impacts patients on an individual level
- Continue to invest in high quality data
 - Completeness + Accuracy = Improved Patient and Provider Confidence
- Remove barriers to participation
 - More providers submitting data improves experience for everyone

Lessons Learned

- Increase the visibility of the immunization recommendations
 - Moved to the top of the screen
- Reduce the wait time for the results
 - Initiate query as soon as the patient is identified so that the results are ready when the pharmacist is
- Improve Pharmacist Training
 - Explain the “how”, “why” and “when”
- Engage Patients

Full Patient Record

- Patient takes home a record that includes their full immunization history in addition to the immunizations given at Walmart



Patient Immunization Record

Name: TOMMY TEST
Address: 123 ELM ST
SCOTTSDALE, AZ 85255
Date of Birth: 01/01/1985

Your Immunization History

Vaccine	Dose	Date	Location	Vaccinator	Mfr. / Lot
Tdap					
Tdap	1	03/01/2015	WALMART STORE #1	PHARMACIST, BOB	GLAXOSMITHKLINE / A12345
FLU					
Influenza,Injectable Presv	1	10/15/2014			
Free					

Immunizations Recommended for You

Vaccines	Due
FLU	10/01/2015
DTaP/DT/Td	03/01/2025

This report was generated on March 04, 2015 by:

WALMART STORE #1
111 MAIN ST
BLACK DIAMOND, WA 98010

Conclusions

- Reliable immunization history information increases pharmacist confidence in recommending additional vaccinations.
- Pharmacists can play an important role in increasing immunization rates, particularly with adults.
- Registry response time is a key variable in the viability of using real-time data at the point of service

Contact Info

Kristen Hutchinson
Director of Pharmacy Clinical Services
Walmart Stores, Inc.
kristen.hutchinson@walmart.com



Brandy Altstadter
Technical Solutions Architect
Scientific Technologies Corporation
brandy_altstadter@stchome.com

