

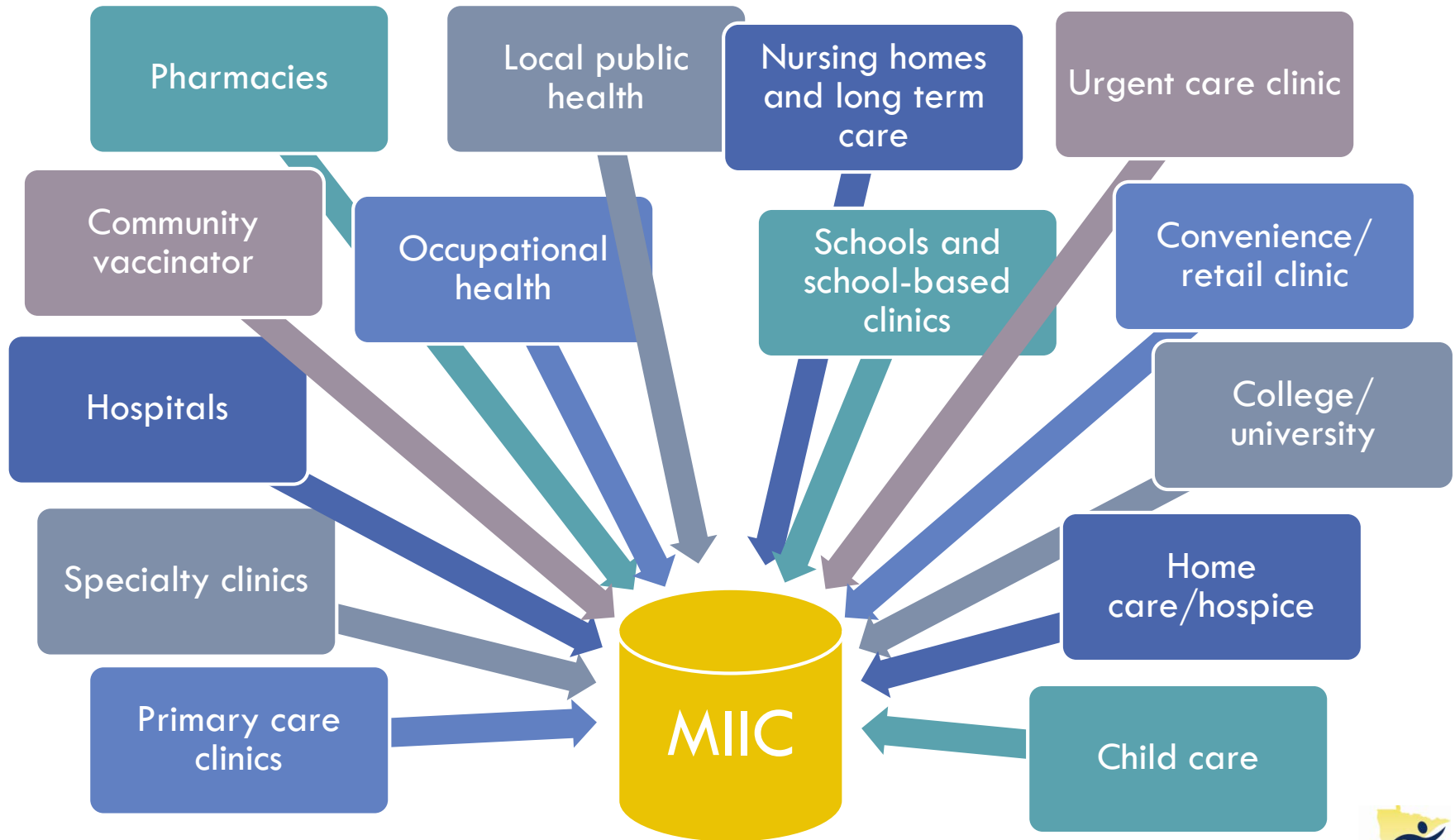


PARTNERSHIPS FOR ADVANCING DATA QUALITY AND DATA USE

Miriam Muscoplat, MPH
MIIC Assistant Manager, MIIC Epidemiologist

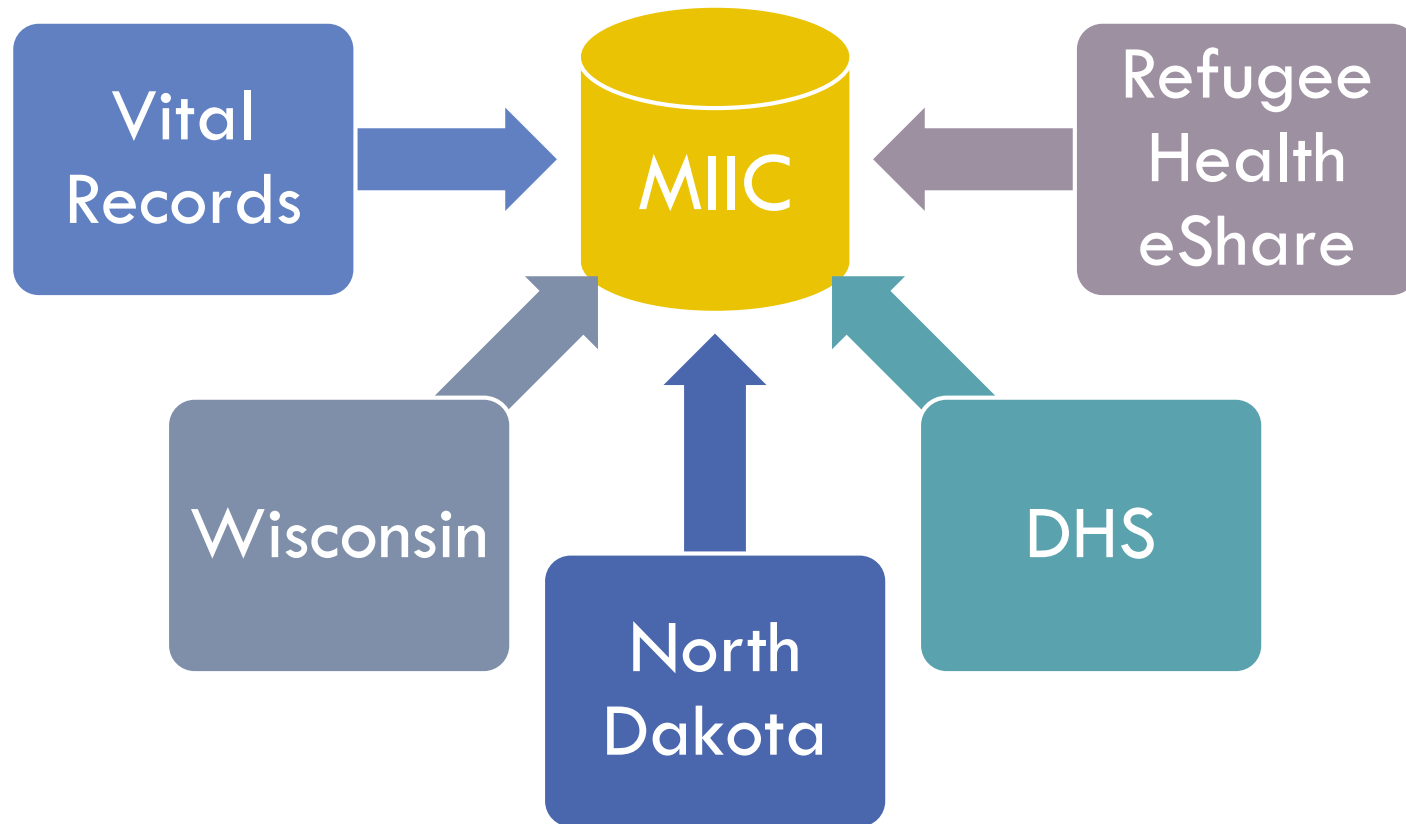
MIIC Data Sources

2



MIIC Data Sources

3



Partnerships

- Incoming Data/Data Use
 - Internal
 - External
- Strategic Partnerships
- Future Partners

Partnerships within MDH

5

- Office of Vital Records
- Refugee Health
- Maternal and Child Health Section

Office of Vital Records

6

- Weekly Data
- Use of Vitals data for Public Health Practice
- Access to STEVE (State and Territorial Exchange of Vital Events)

Refugee Health Program

7

- Immunization Data from e-SHARE
 - Query/response
- Creates master immunization record for Refugees

Maternal and Child Health Section

8

- PRAMS-Health Data on pregnant women collected post-partum
- Match with MIIC data to verify responses to immunization questions on survey

External Partnerships

9

- MN Department of Human Services
- Wisconsin Immunization Registry (WIR)
- North Dakota Immunization Information System (NDIIS)
- University of Minnesota
- Other Research Oriented Partnerships

MN Department of Human Services

10

- Newer Partnership
- Receive quarterly claims data for all Minnesota HealthCare Plan enrollees
- Data Quality evaluation
- Provider Participation evaluation

Wisconsin Immunization Registry

11

- Lots of cross-border movement between Wisconsin and Minnesota for medical care
- Weekly data sharing between MIIC and WIR
- Data exchange built into WIR system
 - Flat file

North Dakota Immunization Information System

12

- Lots of cross-border movement between North Dakota and Minnesota for medical care
- Newer Partnership
- Monthly data loads from ND to MIIC
 - Flat file

Research Partnerships

13

- University of Minnesota School of Public Health
 - Research investigating health outcomes related to out of hospital births
 - Health Informatics Program
- HealthPartners Medical Research Group
 - Analysis of MHC clients with an inappropriate number of immunizations-specifically looking at over vaccination

Strategic Partnerships

14

- Minnesota Pharmacy Association
- MDH Office of Health Information Technology

Minnesota Pharmacy Association

15

- Changes to Minnesota pharmacy law and scope of practice
 - Include MIIC language-2014
 - MIIC Mandate-2015

MDH Office of Health Information Technology (OHIT)

16

- State Health Information Exchanges
- Meaningful Use
- Clinic/Hospital Assessment
 - Landscape of e-Health in Minnesota
- e-Health Advisory Committee
 - Public-Private partnership

Future Partners

17

□ Internal

- Minnesota Electronic Disease Surveillance System (MEDSS)
- Minnesota Cancer Surveillance System

□ External

- More interstate data exchange

Minnesota Electronic Disease Surveillance System

18

- Currently no exchange of data with MEDSS
- Vaccine preventable disease reported to MEDSS
 - Double data entry to get immunization data into MEDSS
- Exploring this partnership

Minnesota Cancer Surveillance System

19

- Exploring partnership and linkage as part of Sentinel Site PPHF grant
- MCSS stored immunization data for certain cancers

New Interstate Data Exchange Partners

20

- Minnesota also borders Iowa and South Dakota
- Resource/staff limitations

Lessons Learned

21

- Best to have one contact for policy/legal work
- Can be time consuming
- Approximately one request per month

Lessons Learned

22

□ Process

- Step 1: Determine if request is covered under existing MIIC Data Use Agreement
- Step 2: If not covered, is the request feasible/appropriate
- Step 3: Legal documents

Lessons Learned

23

- Resources/funding
- Champions are important!

Questions?

Miriam Muscoplat, MPH

651-201-3617

miriam.muscoplat@state.mn.us