

BI-DIRECTIONAL

Out in the Wild...

AIRA National Meeting

April 11, 2017

WHERE WE STARTED...

- Data submissions – beg, borrow and steal



WHERE WE STARTED...

- Data submissions – more than we can handle



HARD TO BELIEVE IT'S ALREADY BEEN ALMOST 7 YEARS...

Stage 1

Data
Capture &
Sharing

2011



Stage 2

Advanced
Clinical
Processes

2014

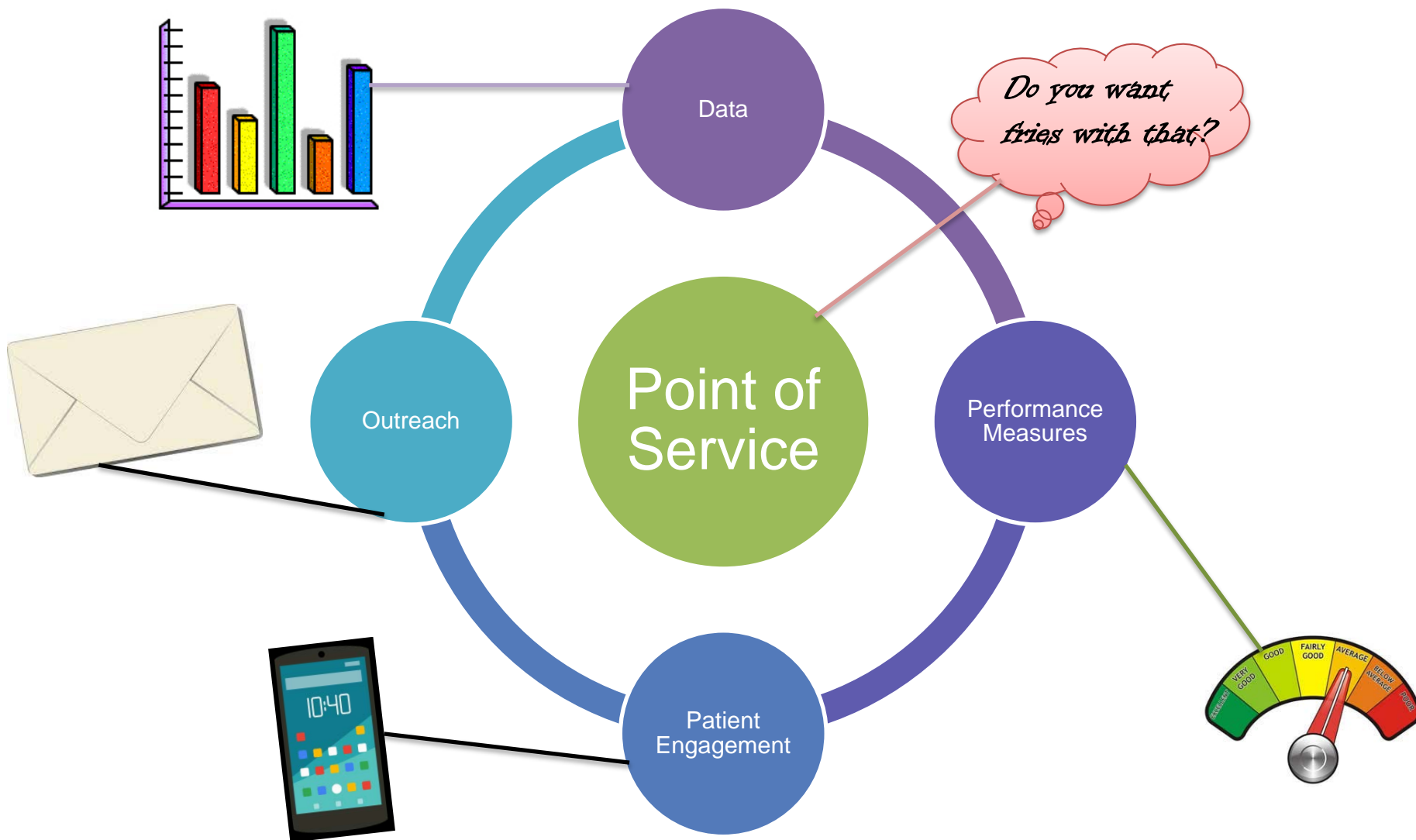


Stage 3

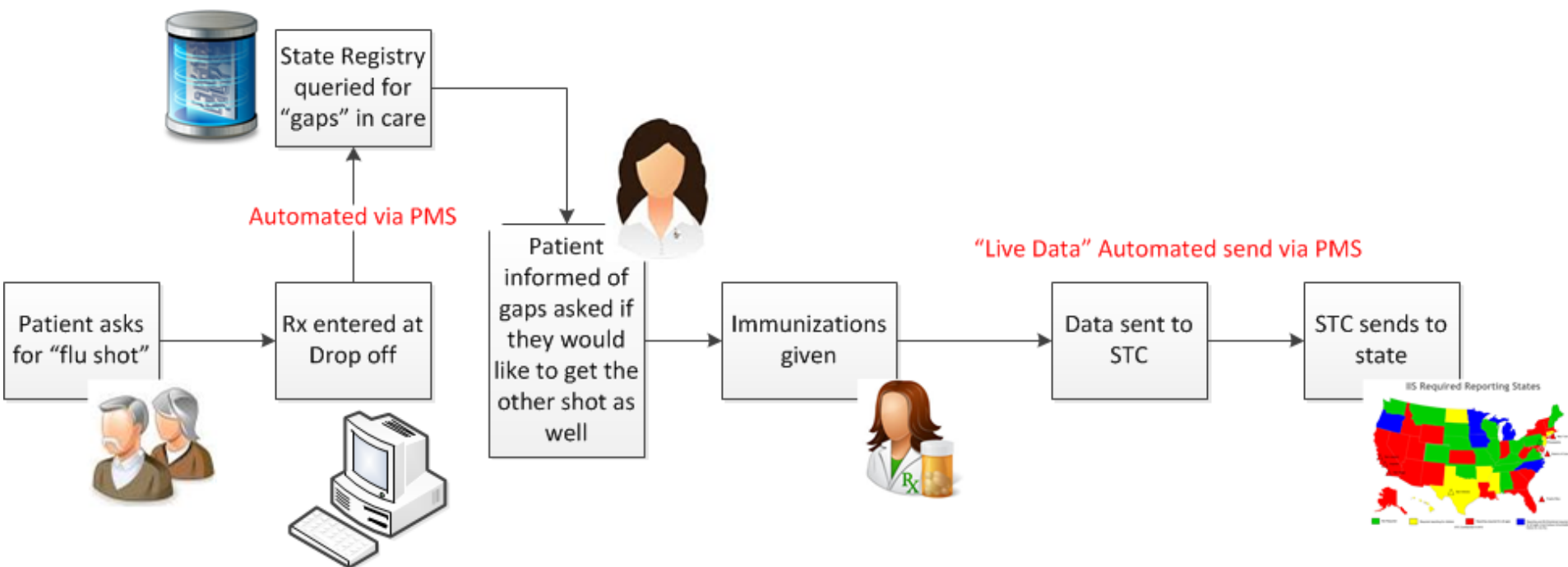
Improved
Outcomes

2018

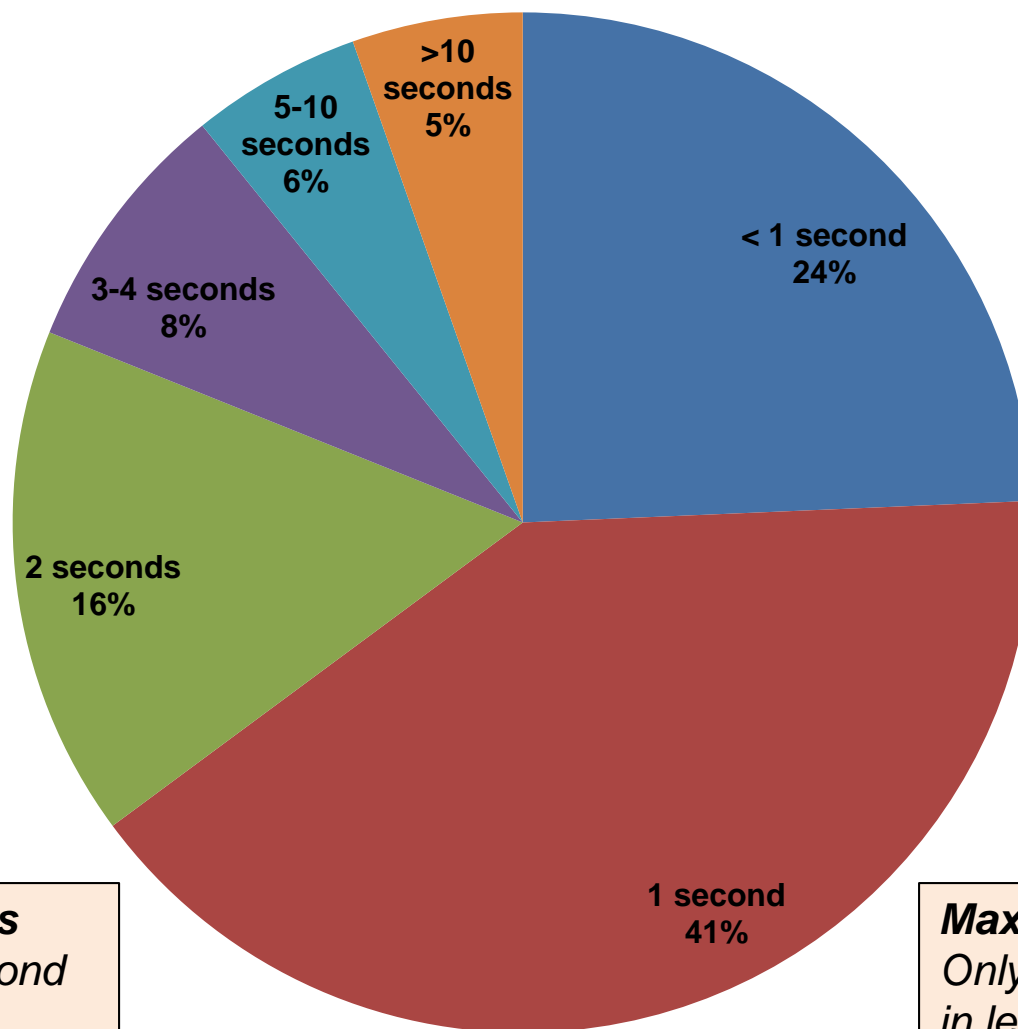
THE FACE OF BI-DIRECTIONAL



POINT OF SERVICE WORKFLOW



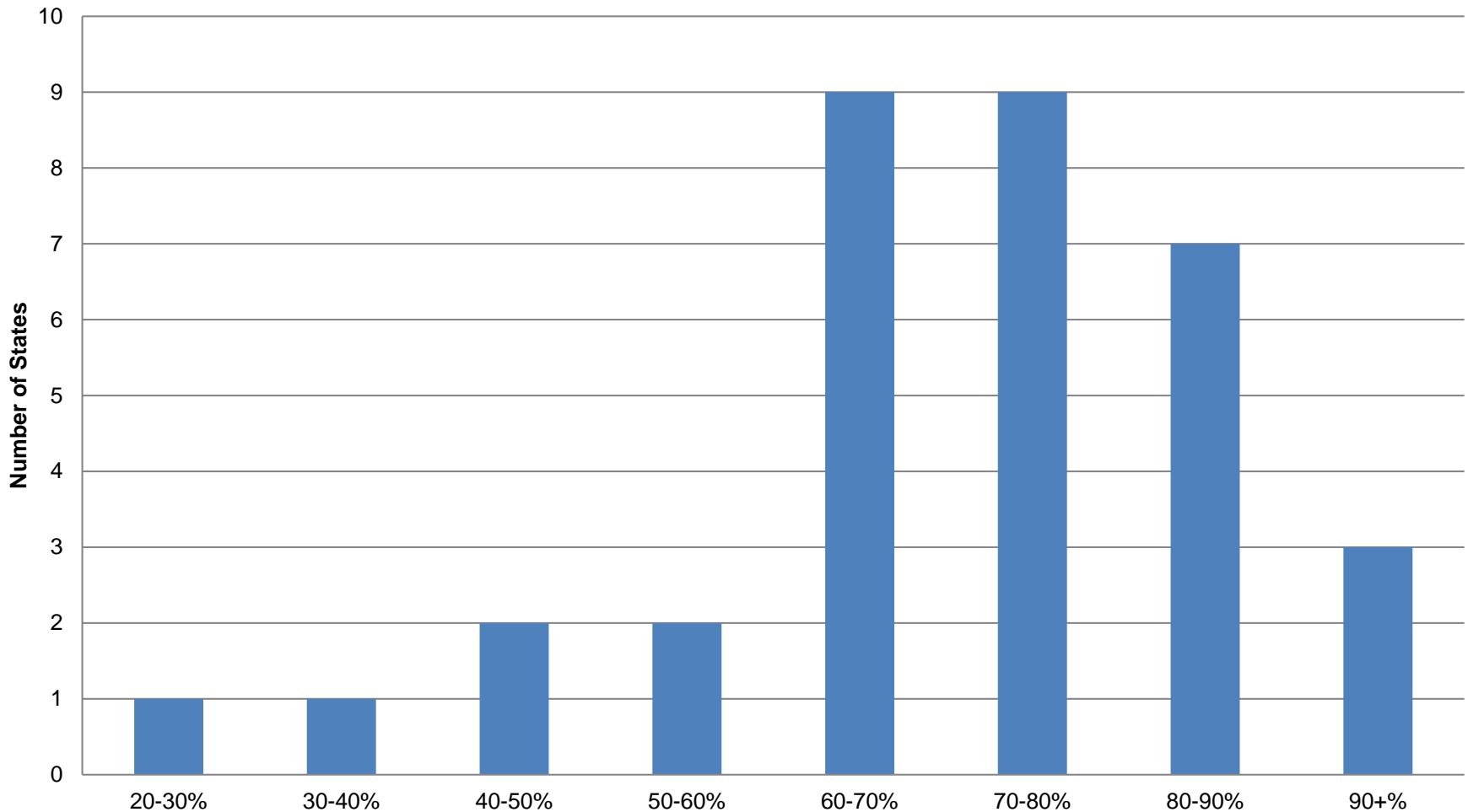
RESPONSE TIMES



Min Response Times
*85% sometimes respond
in less than 1 second*

Max Response Times
*Only 5% always respond
in less than 5 seconds*

MATCH RATES



VARIANCE BETWEEN STATES

- Response times
- Ability to match a record on the first query
- Handling of opt out/in
- Technology differences

MOTIVATORS

- Patient care and improved outcomes
- Expanded business opportunities
- Complying with regulations
- Meeting performance measures

CHALLENGES

- How good is the match?
- How complete is the data?
- How fast do the results return?
- Is the right technology available?

ON-BOARDING

Data
Submissions

Technology
/ File
Format

Data
Quality

vs.

Query

Technology
/ File
Format

Use of
Data / IIS
Accuracy

“NEW” STAKEHOLDERS



Schools



Health
Plans



Add On-
Software



Patients



LEVERAGING THE OPPORTUNITY

- Improve immunization coverage
- Measure missed opportunities
- Direct outreach to patients
- Expanded access
- Reach more adolescents and adults

CONTACT INFO

Brandy Altstadter
Scientific Technologies Corporation
(480)745-8507
brandy_altstadter@stchome.com