

INTER-IIS COLLABORATION

Lessons from the CDC Denominator Inflation
Project

- ▶ Welcome to the World Health and Technology
Immunization Network THinking of Everything Session

WHATINTHE...?

- ▶ This session was called to order by the World Health Immunization Steering Kommittee

WHISK

- ▶ From WHISK, a new mandate: Inter-IIS Collaboration
 - ▶ Our model is the CDC Sentinel Site Denominator Inflation Project
- ▶ Some tough questions need answers, and that's where you come in
- ▶ At this AIRA session, YOU give the results!

WHISK STIRS THINGS UP;
WHATINTHE FIGURES THEM OUT

- ▶ Regions within a grantee's jurisdiction (entire jurisdiction or a subset of the jurisdiction) that demonstrate high data quality measures in the IIS:
 - ▶ $\geq 85\%$ vaccine provider site participation;
 - ▶ $\geq 85\%$ of the child/adolescent (aged <19 years) participation;
 - ▶ $\geq 70\%$ of the doses administered are submitted to and processed by the IIS within 30 days of vaccine administration.
- ▶ Receive competitive supplemental section 317 funds to:
 - ▶ Assesses vaccine use among persons aged <19 years
 - ▶ Conduct programmatic evaluations
 - ▶ Implement enhanced data quality activities
 - ▶ Publish and present findings

IIS SENTINEL SITE BACKGROUND

- ▶ The Sentinel Site have a long history of serving as “learning laboratories” for the CDC and the IIS community as a whole
- ▶ Collaborations between CDC and the IIS Sentinel Sites have included:
 - ▶ Vaccination Coverage Assessments
 - ▶ Monitoring of Vaccination Uptake and Shortage
 - ▶ Pandemic Preparedness
 - ▶ HPV Vaccination Coverage
 - ▶ Data Linkage

A RICH HISTORY OF COLLABORATION

- ▶ Beneficial growth and synergy for both CDC and the IIS Sentinel Sites
 - ▶ Increased IIS data quality and use
 - ▶ Increased understanding of the technical and site specific challenge to maintaining a high quality IIS
 - ▶ Increased interest in IIS Sentinel Site data to inform programmatic decisions
 - ▶ Pandemic Preparedness
 - ▶ Data linkage
 - ▶ VE
 - ▶ NIS/IIS Estimates
 - ▶ Increased understanding of the practical implications of best practices and guidance
 - ▶ Increased capacity and program infrastructure
 - ▶ Increased collaborative capacity between CDC and Awardees

THE IMPACT OF COLLABORATION

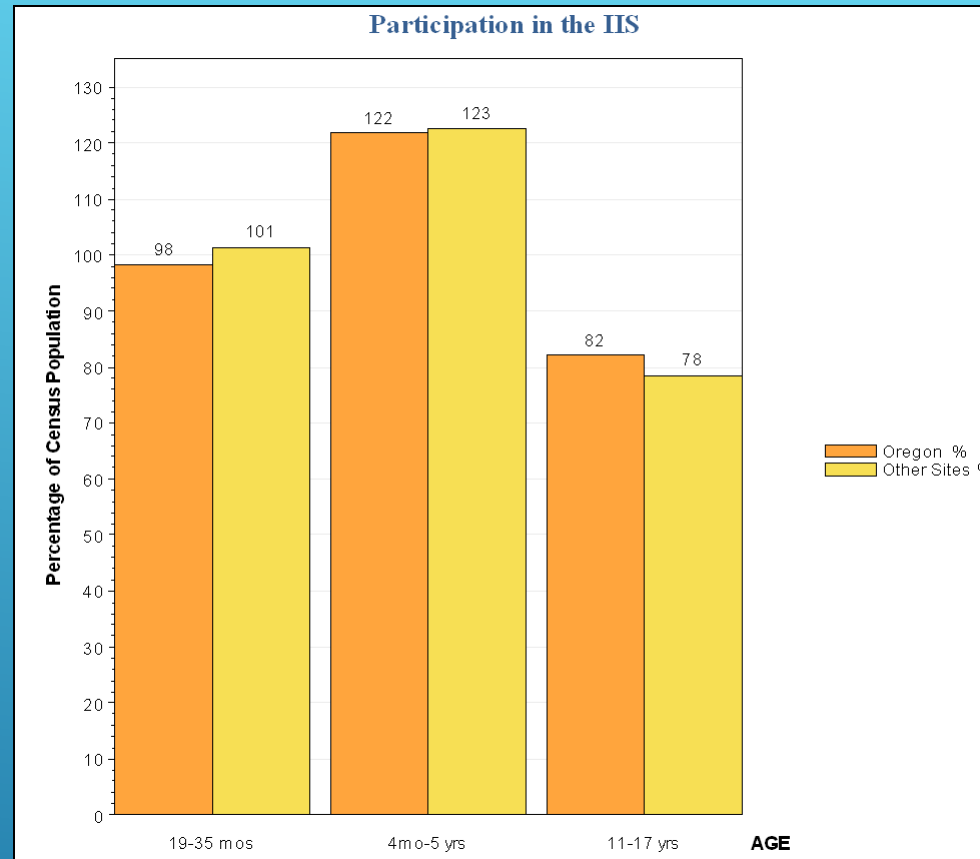
CDC Benefits	IIS Sentinel Site Benefits
Increased knowledge of state-specific IIS systems and practices	Increased Data Quality
Increased ability to showcase the many attributes of IIS to CDC leadership and decision makers	Increased internal IIS Capacity
Increased ability to provide up-to-date information on critical, IIS related issues	Increased funding to strengthen IIS Infrastructure
Increased knowledge of the practical implications of IIS community and CDC related guidance	Opportunity to be on the “front line” to address complex and critical IIS related issues
Increased opportunity to sell the successes and capabilities of the IIS	Opportunity to inform and contribute to the IIS literature

BOTH SIDES WIN!

- ▶ Participation by all Sentinel Site Project Awardees
- ▶ Conceived and Sentinel Site-led process
- ▶ Systematic investigation of a common issue, with repeatable methods
- ▶ Parameters of analysis were determined by both CDC and Sites
- ▶ Satisfied a cooperative agreement evaluation requirement
- ▶ Outcomes of interest are both Quantitative and Qualitative
 - ▶ Quantitative: How does denominator inflation impact coverage estimates in the IIS?
 - ▶ Qualitative: What considerations must be made when attempting an inter-IIS collaboration? How does this exercise influence future collaborative cooperative agreement activities?

THIS COLLABORATION IS DIFFERENT

► How it all started:



Q1 2014 DATA QUALITY REPORT

▶ Definition

- ▶ A greater number of clients reported as living in a region than actually exist

▶ Sources

- ▶ Records that don't belong in the IIS
- ▶ Record Fragments (incompletely merged records)

▶ Effects

- ▶ Clinical:
 - ▶ Over- or under-vaccination
 - ▶ Decreased effectiveness of reminder and recall efforts (returned letters)
- ▶ Analytical:
 - ▶ Lowered population coverage rates

DENOMINATOR INFLATION (DI)

► At each Sentinel Site

1. Pick a problem
2. Define an analysis
3. Conduct initial look
4. Partner up for replication
5. Adjust analysis as needed
6. Complete analysis, compare to replication
7. Write up brief summary

► Results

1. Denominator inflation white paper due next year
 - We can share this with you!
2. A way to collaborate among IIS that works (... sort of)

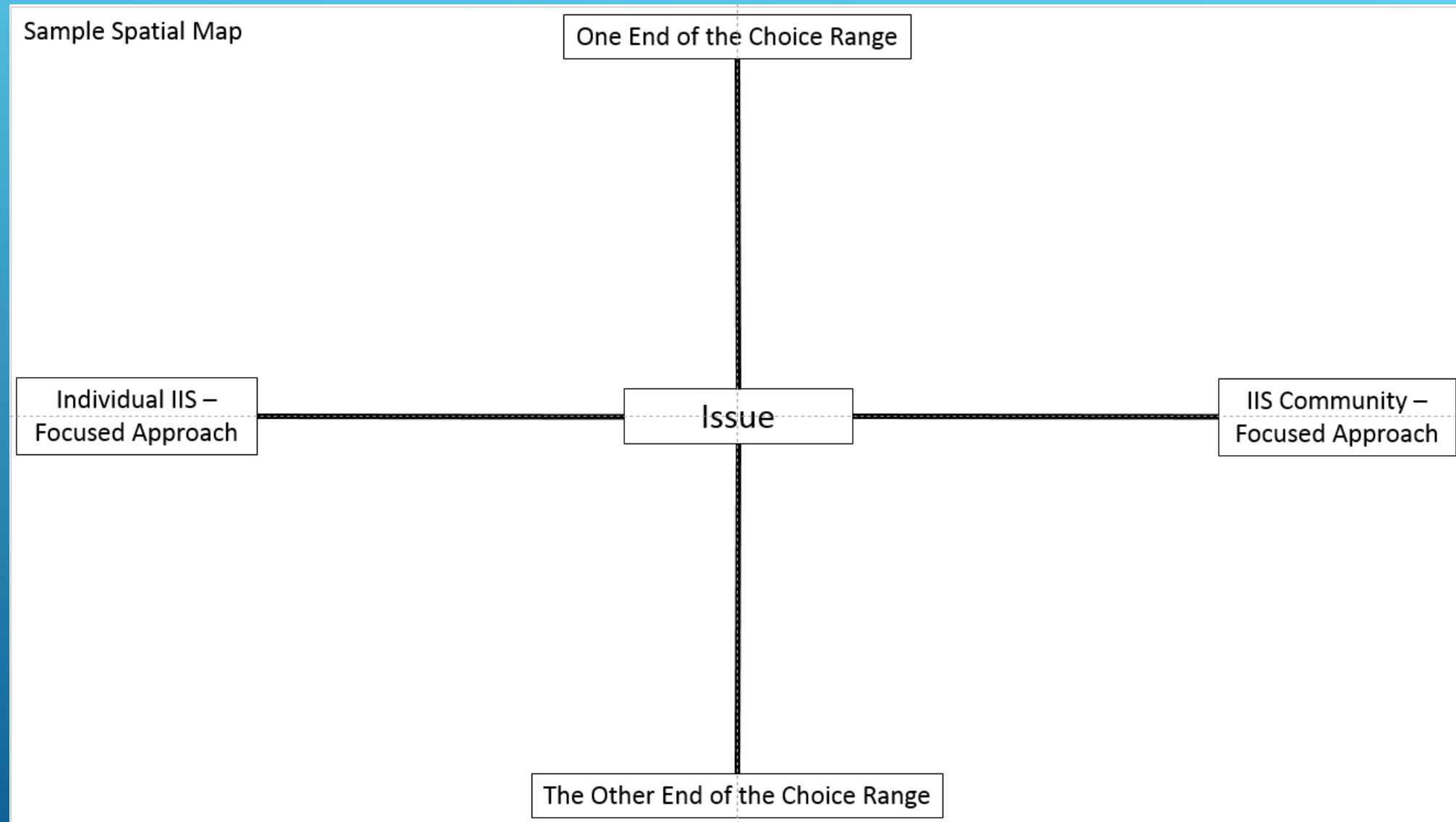
DENOMINATOR INFLATION INVESTIGATION

► DI Project – a lot of excitement; a lot of questions

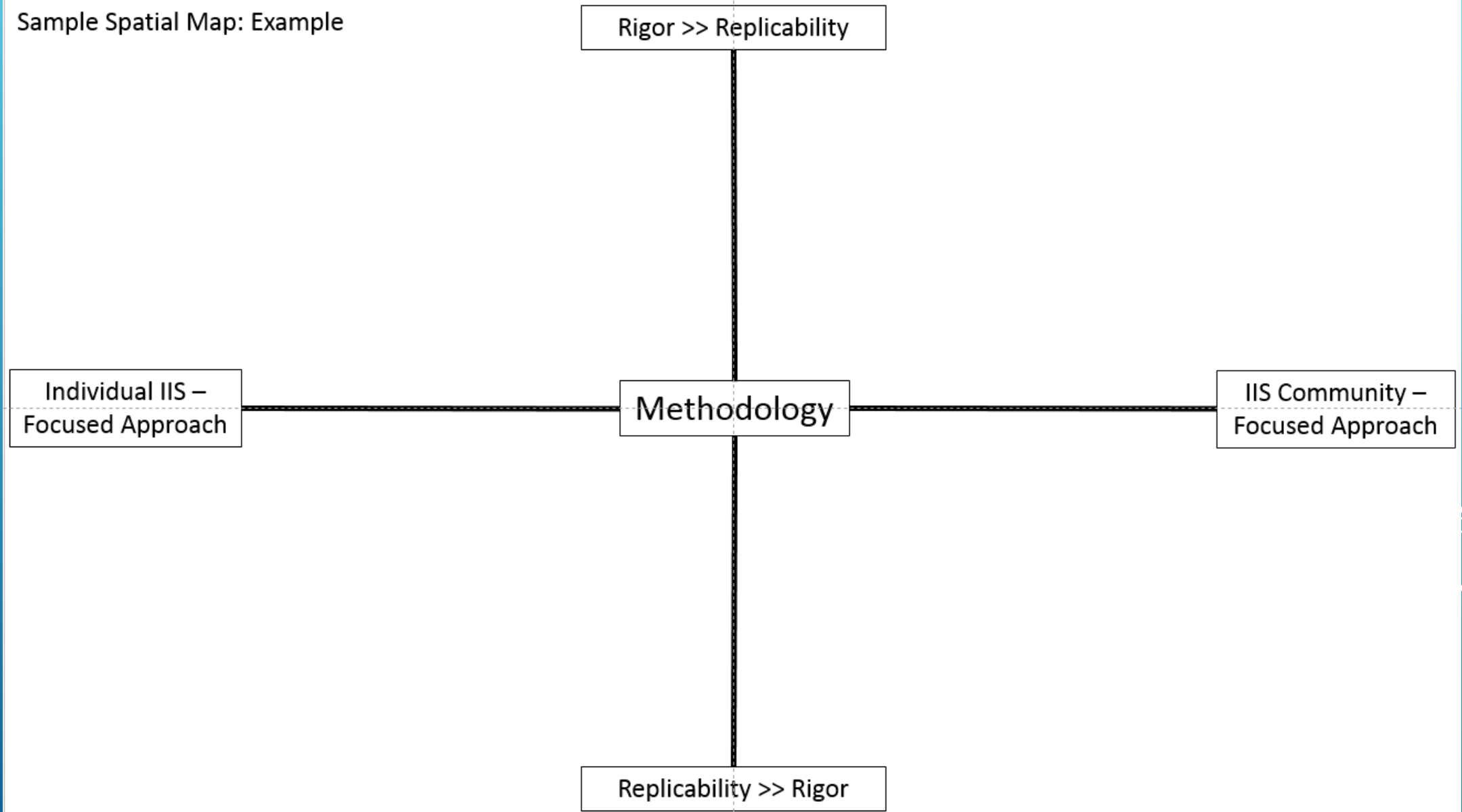
1. Can we be sure we identified the most important DI issues?
2. How can we generalize our collaborative process?
3. How do we manage results and variations in methods?
4. How can we address some of the issues that arise during collaboration?

2016 CDC SENTINEL SITE ANNUAL MEETING

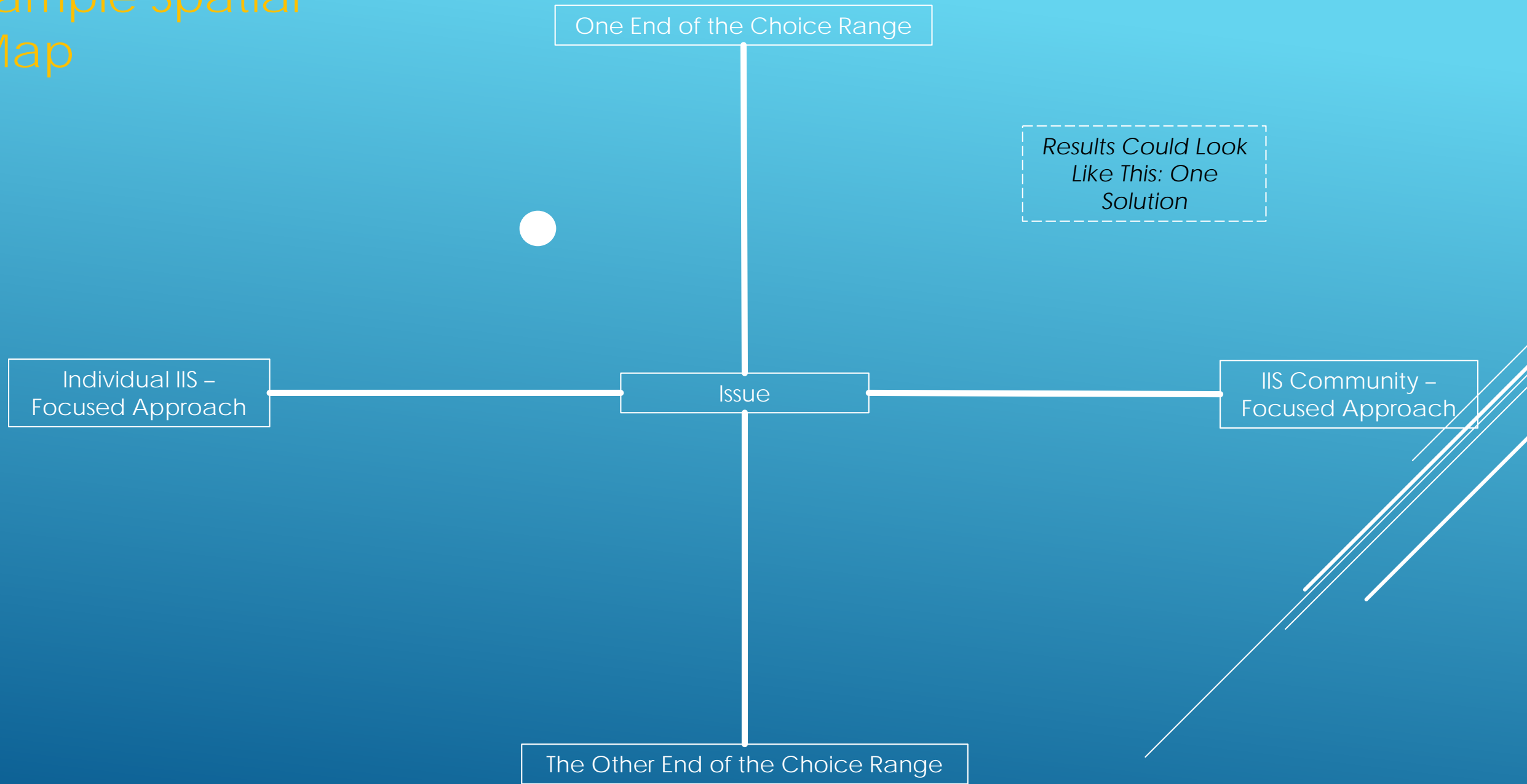
NOW COMES THE FUN PART – SPATIAL MAPS



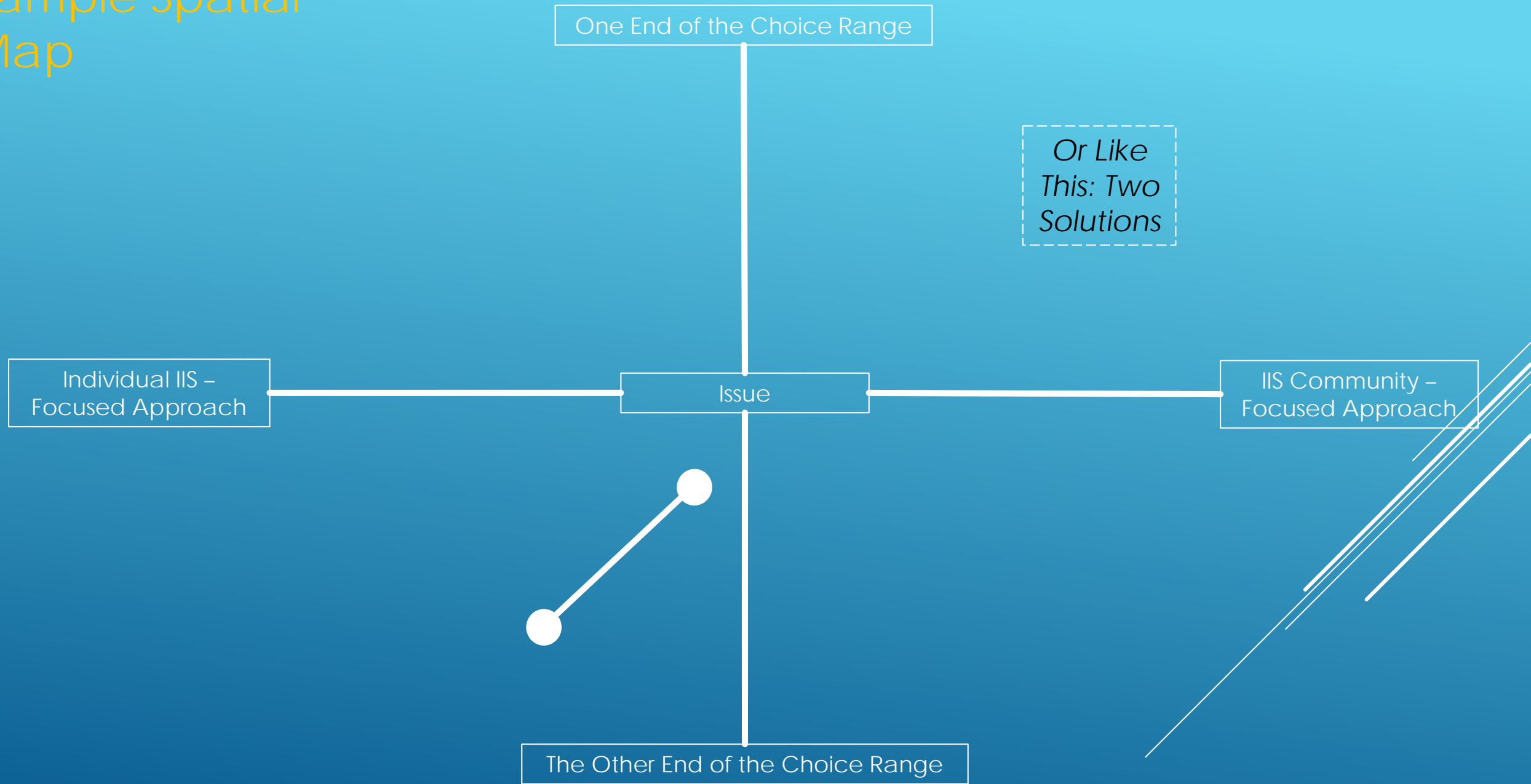
Sample Spatial Map: Example



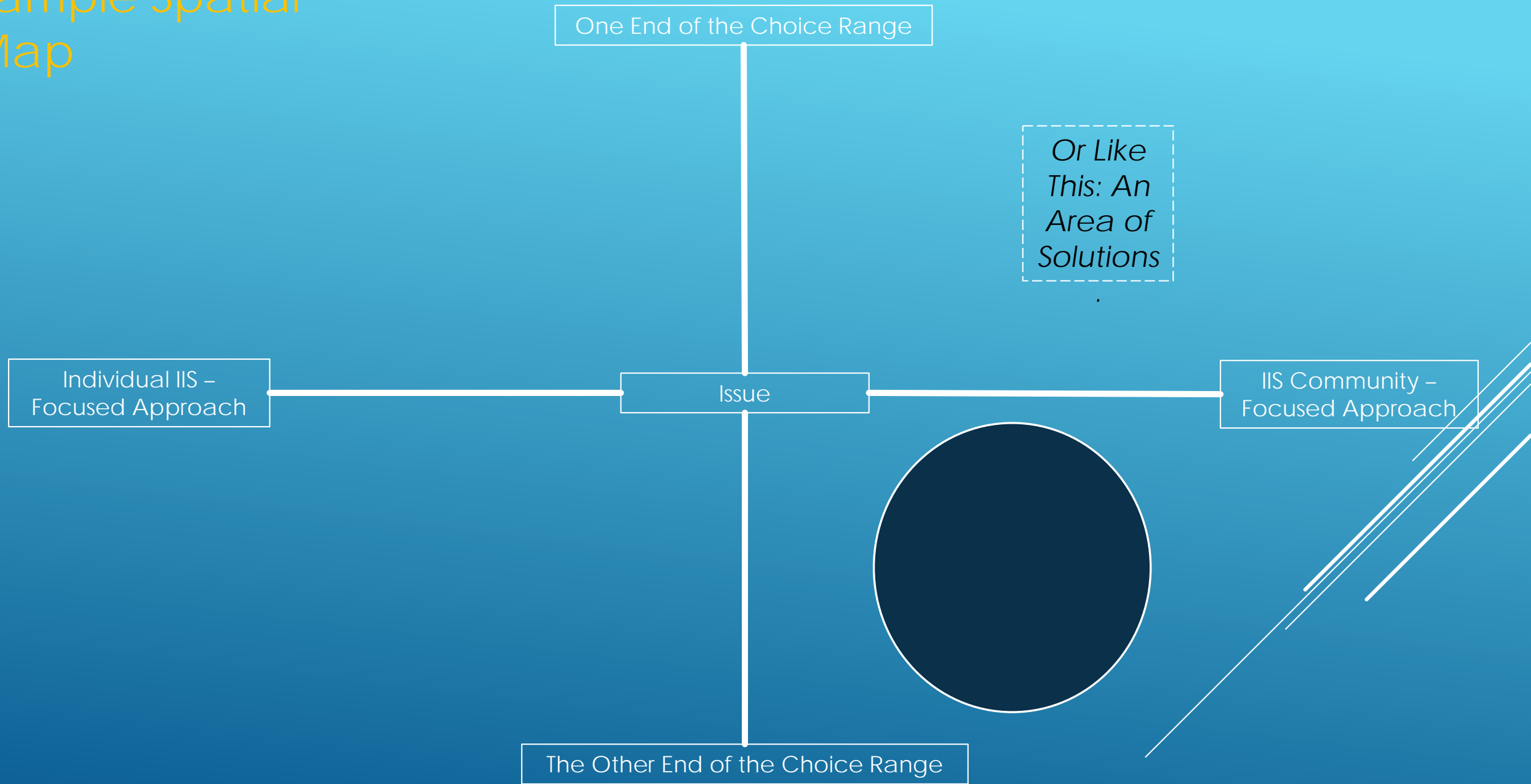
Sample Spatial Map



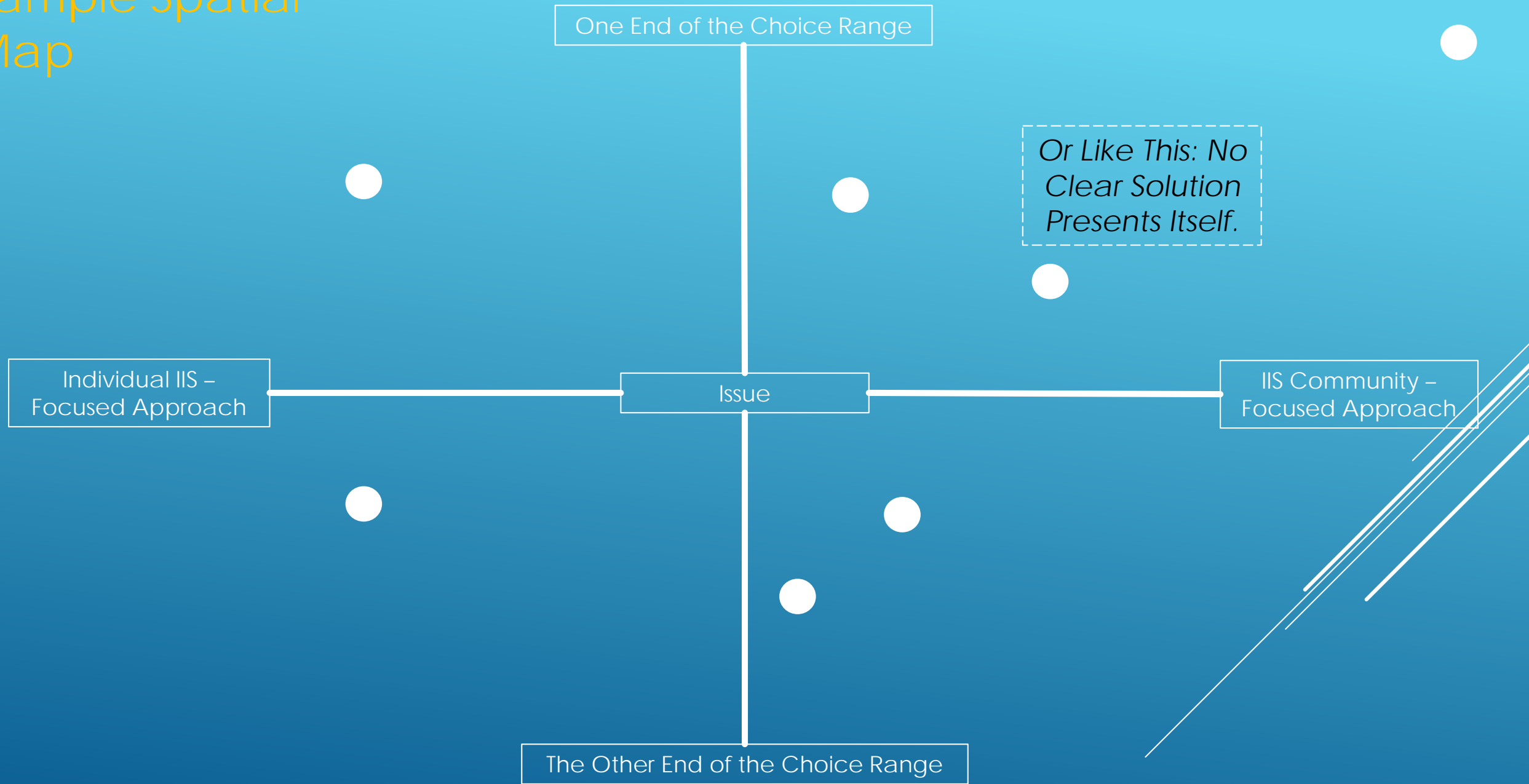
Sample Spatial Map



Sample Spatial Map



Sample Spatial Map



LET'S GET STARTED!

- Pick a table
- Say Hi your proctor
- Mull the issues
- Show what you got!

Thank you for being here!

Several white lines of varying lengths and angles are positioned in the bottom right corner of the slide, creating a modern, abstract graphic element.