

THE IIS ANNUAL REPORT (AKA, IISAR)

AIRA Discovery Session
January 26, 2014, 4pm Eastern



OVERVIEW

The IISAR, Defined

Using the IISAR data to guide local planning – Mary Woinarowicz, North Dakota

What's new in the 2014 tool? – Laura Pabst and Terence Ng, CDC

Questions, Comments and Discussion

THE DEFINITION OF IISAR, PER CDC:

THE IMMUNIZATION INFORMATION SYSTEMS ANNUAL REPORT (IISAR) IS AN ANNUAL ASSESSMENT CONDUCTED BY CDC, NATIONAL CENTER FOR IMMUNIZATION AND RESPIRATORY DISEASES (NCIRD), IMMUNIZATION INFORMATION SYSTEMS (IIS) SUPPORT BRANCH, AMONG THE 64 IMMUNIZATION PROGRAM GRANTEES THAT RECEIVE FUNDING UNDER SECTION 317B OF THE PUBLIC HEALTH SERVICE ACT. GRANTEES INCLUDE THE 50 STATES, 5 CITIES, THE DISTRICT OF COLUMBIA (D.C.) AND 8 TERRITORIES.

- *SELF-ADMINISTERED WEB-BASED QUESTIONNAIRE COMPLETED BY IMMUNIZATION PROGRAM MANAGERS AS PART OF THEIR ANNUAL REPORTING REQUIREMENT.*
- *MISSION IS TO GIVE ACCESS TO THESE DATA AND TO ASSIST IN FACILITATING THE USE OF THESE DATA FOR PUBLIC HEALTH PROJECTS.*

IISAR DATA ARE AVAILABLE ONLINE:

CDC Home



Centers for Disease Control and Prevention
CDC 24/7: Saving Lives. Protecting People.™

SEARCH

A-Z Index [A](#) [B](#) [C](#) [D](#) [E](#) [F](#) [G](#) [H](#) [I](#) [J](#) [K](#) [L](#) [M](#) [N](#) [O](#) [P](#) [Q](#) [R](#) [S](#) [T](#) [U](#) [V](#) [W](#) [X](#) [Y](#) [Z](#) <#>

Immunization Information Systems

[Vaccines Home](#) > [Programs](#) > [IIS Homepage](#) > [IIS Annual Report \(IISAR\)](#)

◀ [IIS Annual Report \(IISAR\)](#)



[Contact Us](#)

IIS Interactive Data Query Tool

Welcome to the IISAR Data Query Tool, which provides access to select data collected in IISAR. Should you require additional data and/or have questions and comments please contact IISINFO at IISINFO@cdc.gov:

Please select an awardee from the drop-down list below, then click on the "Get Report" button to display the 2011 IIS Annual Report for that awardee.

For your convenience, you can view IISAR questions here:

[2004/05](#) | [2006](#) | [2007](#) | [2008/2009](#) | [2010](#) | [2011](#) | [2012](#) | [2013](#)

Select Grantee Select year

GET REPORT

http://www2a.cdc.gov/nip/registry/IISAR/IISAR_QUERY.asp

HOW EXTRACTING IISAR DATA CAN SOMETIMES FEEL...

Is this the
right answer?

What do they mean
by this question?

Why does my
system have 115%
of the census pop?



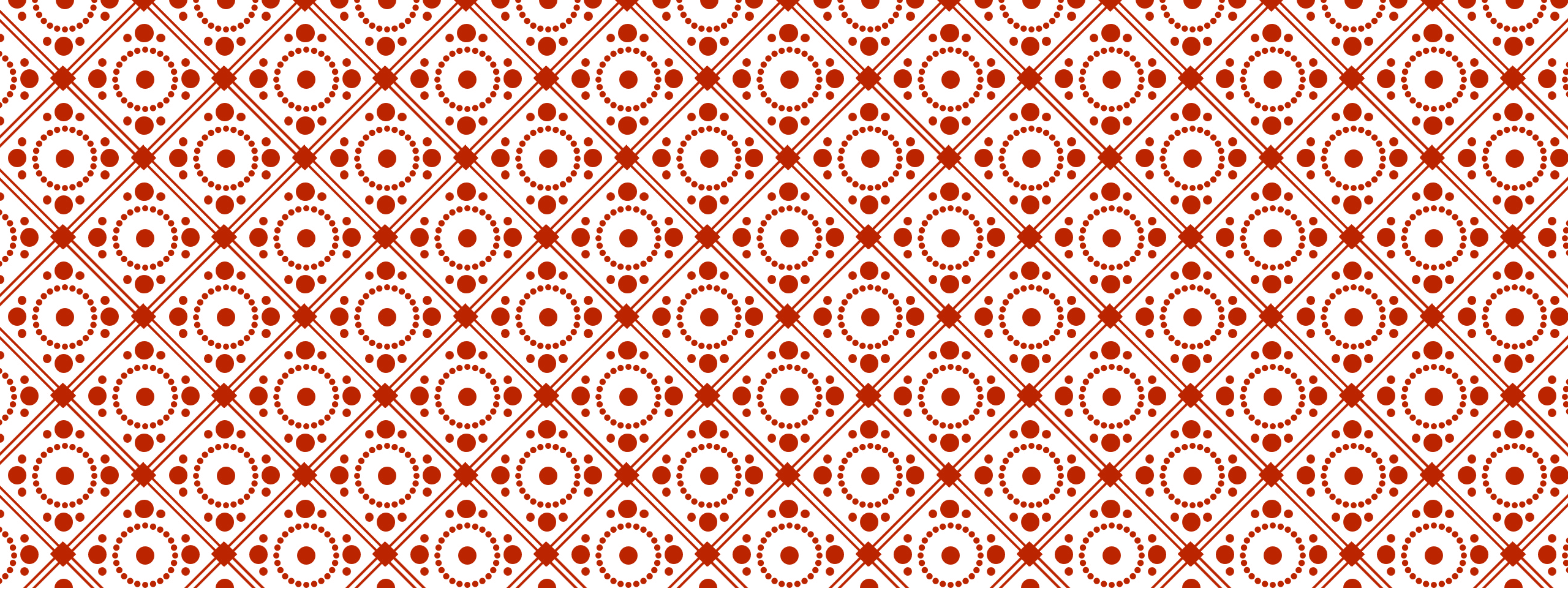
Do I exclude
H1N1 data?

Do I include
historical data in
this question?

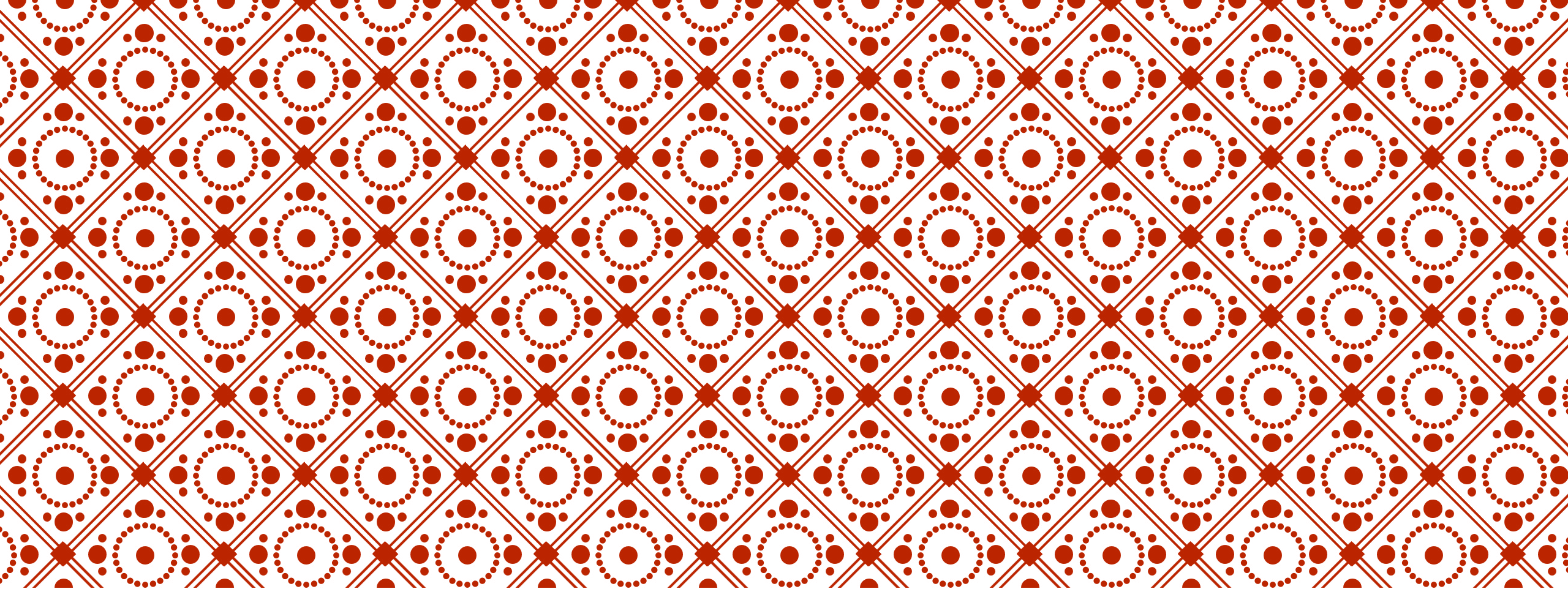
What more
can I do with
these data?



PLEASE SAVE QUESTIONS/COMMENTS UNTIL THE END...



QUESTIONS, COMMENTS, DISCUSSION?



THANKS SO MUCH!