

# Build up your IIS workforce!

**AIRA 2021 National Meeting**



Samantha Chao, MPH, PMP

August 4, 2021

THE TASK FORCE FOR  
GLOBAL HEALTH

# Who we serve

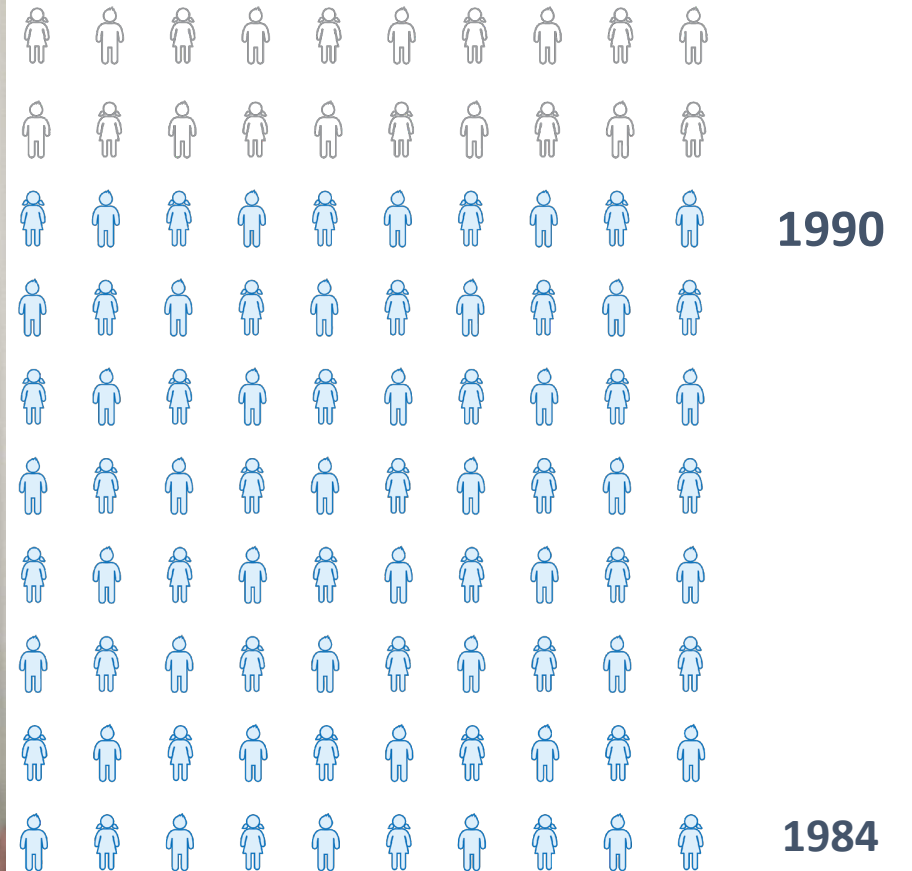


150+ Countries

# Why it all began



DR. WILLIAM H. FOEGE





# We apply deep expertise & partnerships to:



## ELIMINATE DISEASES

- Polio
- Viral Hepatitis
- Neglected Tropical Diseases (NTDs)



## ENSURE ACCESS TO VACCINES

- Development: safety protocols
- Delivery: Supply chains, health care systems & building vaccine confidence



## STRENGTHEN HEALTH SYSTEMS

- Train & equip epidemiologists
- Deliver essential medicines
- Help public health teams build & use digital information systems





Public Health  
Informatics Institute

# MISSION

Advance health outcomes worldwide by guiding public health organizations to effectively access, use, and share information through the application of current and innovative information technologies.

# What we do:

- Workforce development
- Capacity-building
- Shared solutions and products
- Process analysis and requirements development
- Technical assistance



# Poll time!

- Raise your hand if your IIS team has onboarded new people since COVID-19 started.

# Poll time!

- Raise your hand if YOU started working in immunizations/IIS since COVID-19 started.



# IIS Core Competency Model





## Immunization Information System (IIS) Core Competency Model

July 2021

**Driving question: What does  
an IIS team have to *know* and  
*do* to be high-performing?**



**Domain name** →

**Definition** →

**Competency  
statements** →

# IMMUNIZATION INFORMATION SYSTEM (IIS) CORE COMPETENCY MODEL

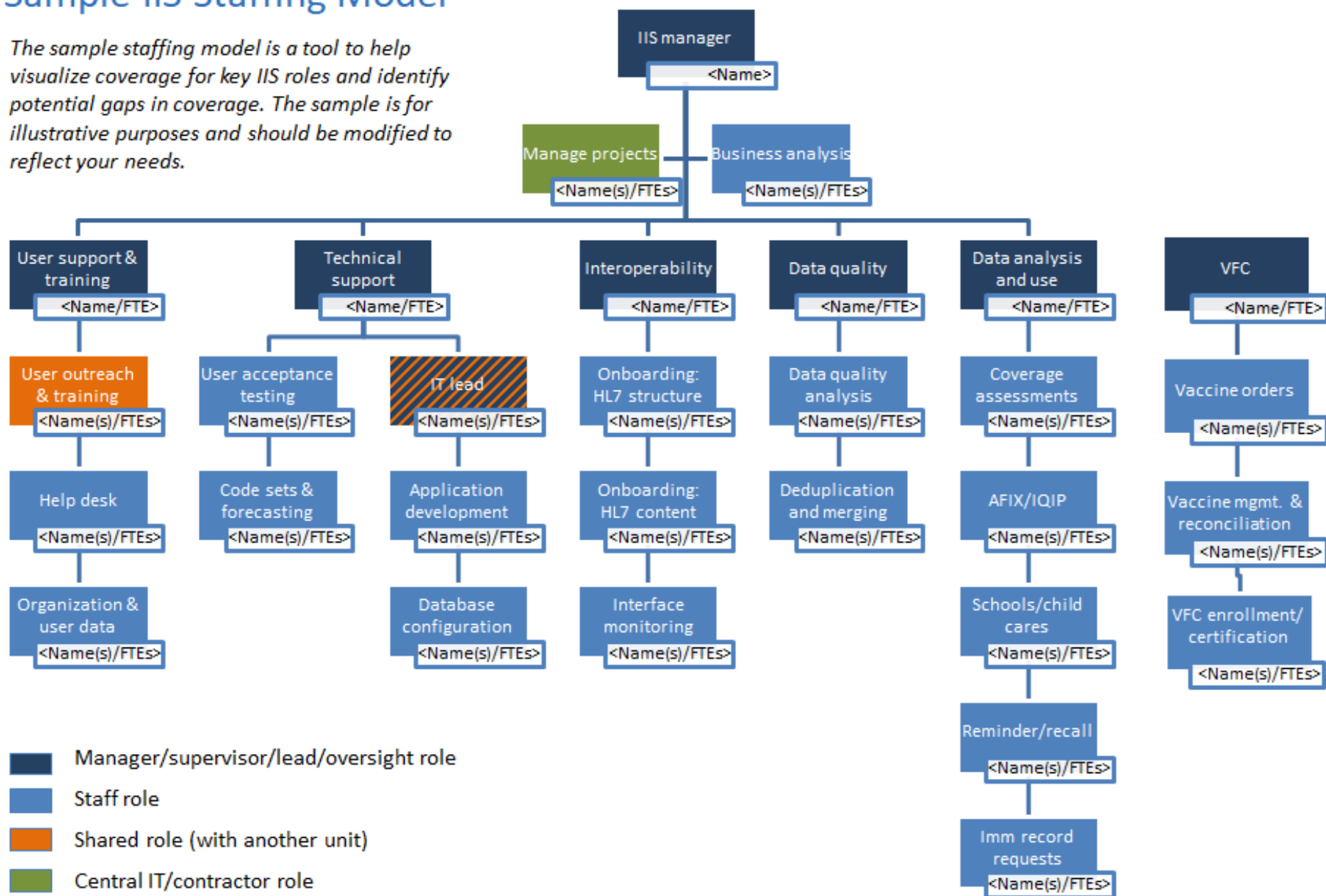


# Staffing Tools



# Sample IIS Staffing Model

The sample staffing model is a tool to help visualize coverage for key IIS roles and identify potential gaps in coverage. The sample is for illustrative purposes and should be modified to reflect your needs.





## Immunization Information System (IIS) Trainer

*Sample Role Description*

March 2016

# Roles descriptions include:

- IIS manager
- Project manager
- Business analyst
- Help desk technician
- Data quality analyst
- Data entry deduplication specialist
- Data extract analyst
- Interface analyst
- Testing analyst
- Trainer

*What other roles are there within an IIS team that need a role description with associated competencies?*



# Trainings and eLearnings



# Welcome to IIS Email Course



The diagram features a central blue shield with the letters 'IIS' in white. Ten dotted lines radiate from this central shield to ten surrounding icons: a doctor and patient, an EHR monitor, a stack of documents, a server rack, a syringe, a gear, a database cylinder, a book labeled 'HL7', a hospital building, and a person at a computer. The entire diagram is set against a background of blue and green radial lines.

Welcome to IIS Email Course

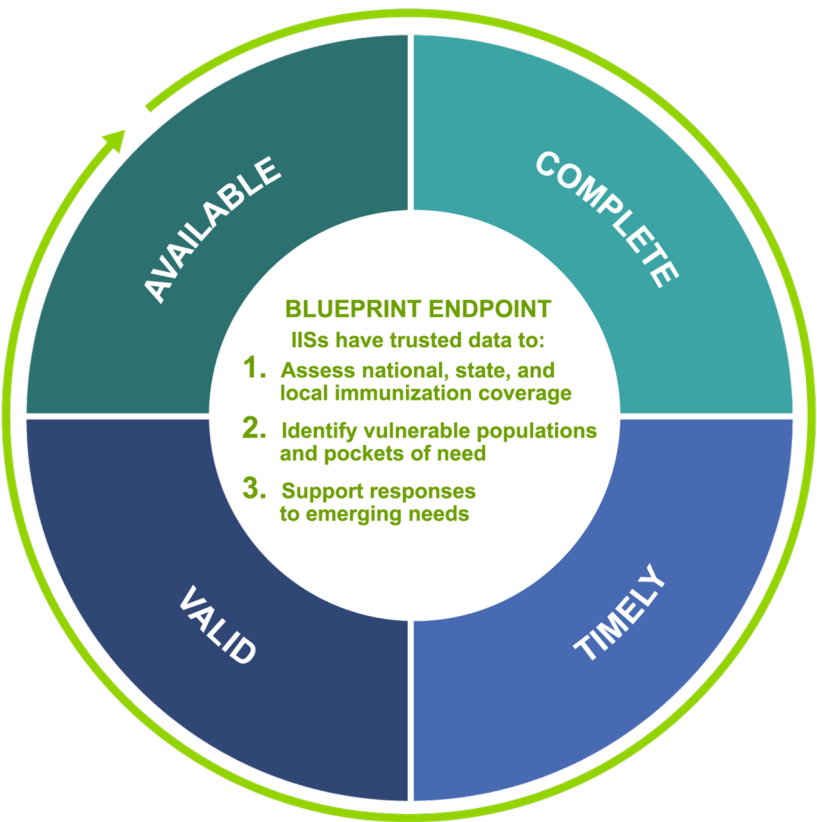
Unit 1: What Are IIS?

Lesson 1: Welcome!

1 2 3

A progress bar at the bottom shows three sections. The first section, labeled '1', is highlighted in orange and contains five small squares. The second section, labeled '2', contains five small squares. The third section, labeled '3', contains five small squares.

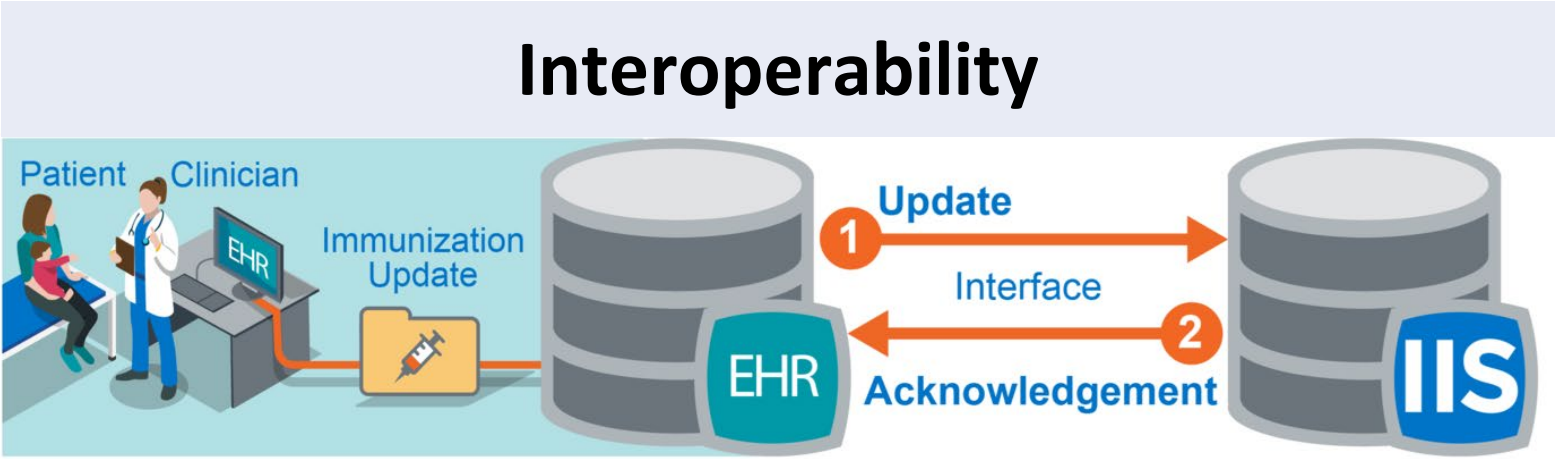
# Fundamentals of IIS courses



ENABLING CHARACTERISTICS

ACCURATE	CONSISTENT	UNIQUE
----------	------------	--------

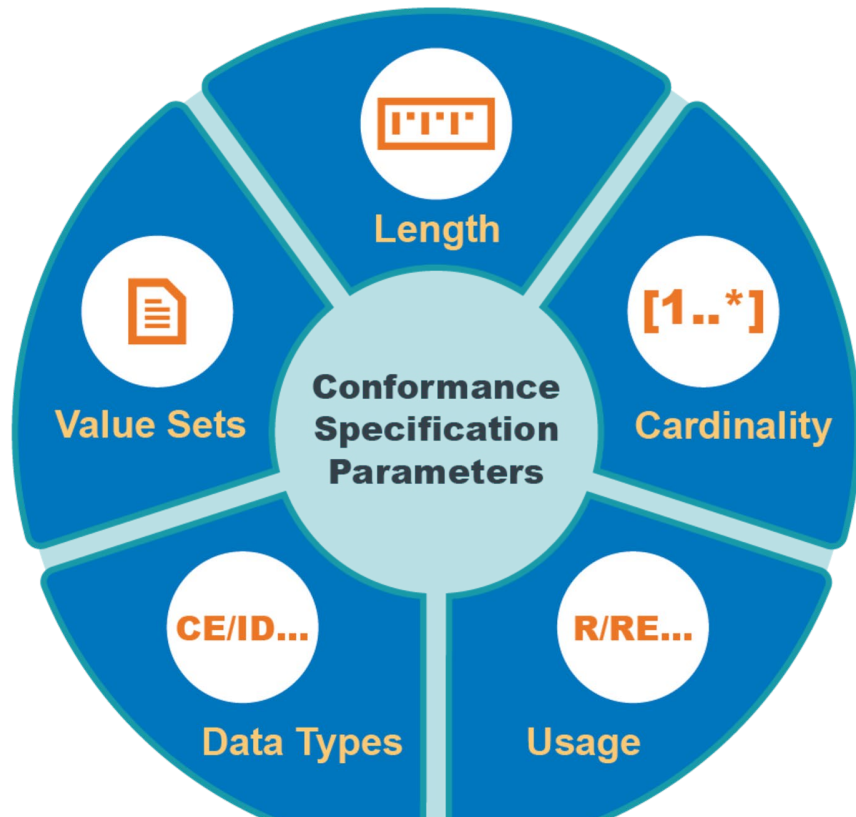
## Data Quality



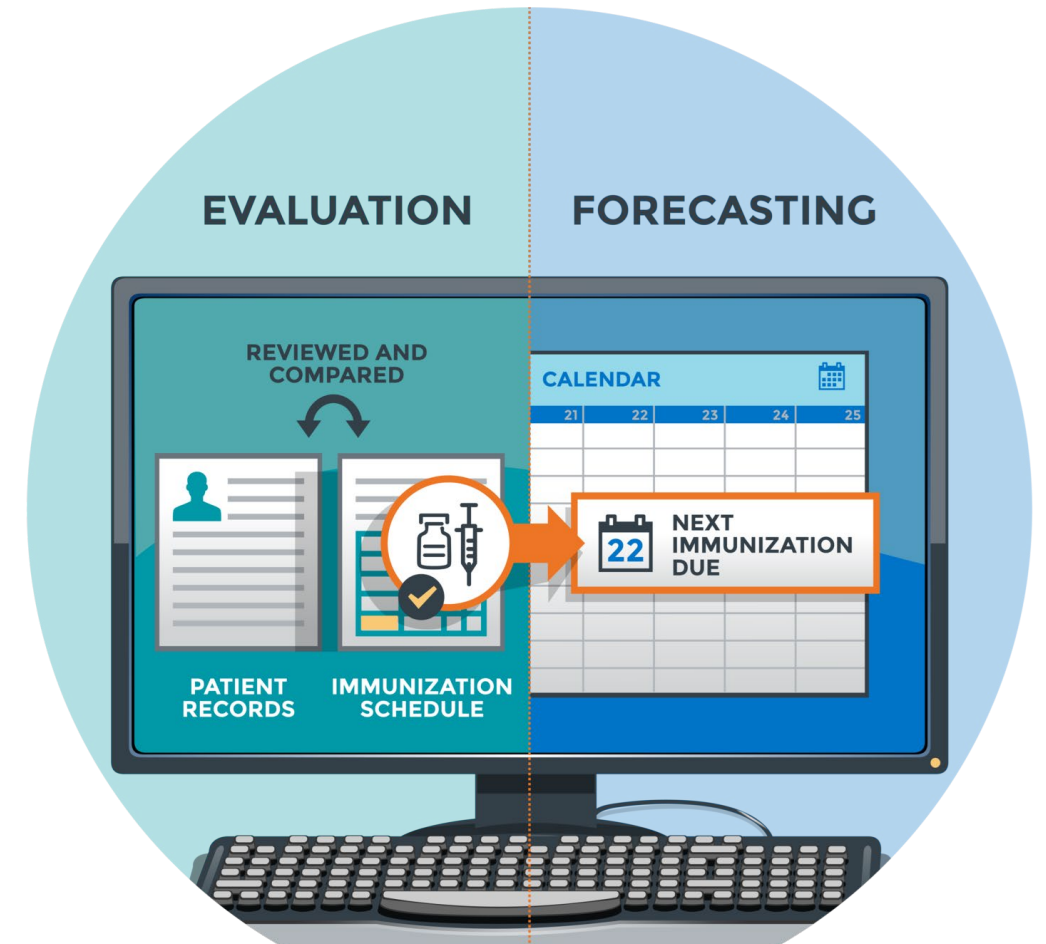
## Basics of HL7

```
PID|1||3123^^^NIST-MPI-1^MR||Richardson^Russell^Clint^^^^L|Billington^^^^^^M|20150415|M||  
1002-5^American Indian or Alaska Native^CDCREC|543 Blount Drive^^Bozeman^MT^59715^USA^P||  
^PRN^PH^^^406^5557690|||||||2186-5^Not Hispanic or Latino^CDCREC||N|1||||N
```

# More advanced IIS topics



## Advanced HL7



## Immunization Evaluation & Forecasting

# Poll time!

- If we created training courses, what topics would be most helpful for your team?
  - New staff
  - Existing staff



[phii.org/IISHub](http://phii.org/IISHub)



# Poll time!

- How else can PHII best support you and your staff?
  - Trainings
  - Toolkits
  - Technical assistance
  - Workshops

# Questions?



**Samantha Chao, Public Health Informatics Institute**

**[schao@phii.org](mailto:schao@phii.org)**