

The requirements traceability matrix: align with CDC's Functional Standards



Danielle Sill, MSPH Public Health Informatics Institute
Marietta (Beth) Cox, MS Centers for Disease Control and Prevention

April 27, 2022

Disclaimer

This requirements traceability matrix was supported by cooperative agreement number 6-NU38OT000316, funded by the Centers for Disease Control and Prevention (CDC). Its contents are solely the responsibility of the authors and do not necessarily represent the official views of the Centers for Disease Control and Prevention or the Department of Health and Human Services.

Agenda

1. Requirements Traceability Matrix (RTM) Background
2. Using the RTM to address IPOM 2022 Chapter D Activity 3a
3. RTM Development Process
4. IIS Functional Model
5. RTM Live Demo
6. Additions to the RTM



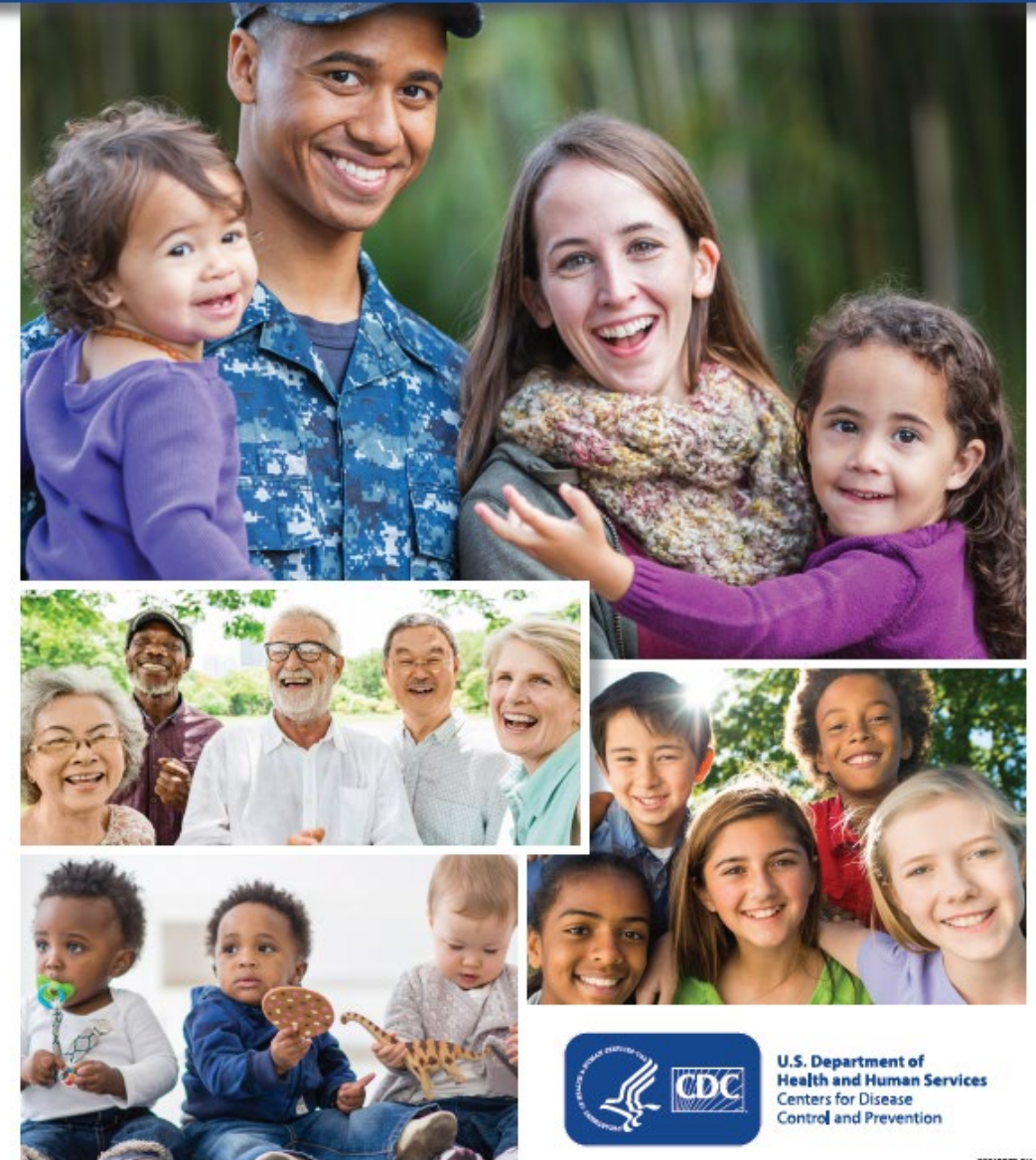
RTM Background

Jurisdictions need detailed requirements for developing a Request for Proposal whether they are transitioning to a new platform or are looking to add specific functionality their IIS needed to support their program.

Use the RTM to Address D3a

Strategy D3: Adhere to industry information technology standard practices.

D3a: Evaluate IIS capabilities and determine the steps needed to modernize, including optimizing for scalability and performance, minimizing systems downtime, and ensuring uninterrupted immunization data flow in alignment with CDC requirements. If applicable, collaborate with other platform users to establish collective (consortium) priorities for modernization and a plan to jointly fund them.



Use the RTM to Address D3a

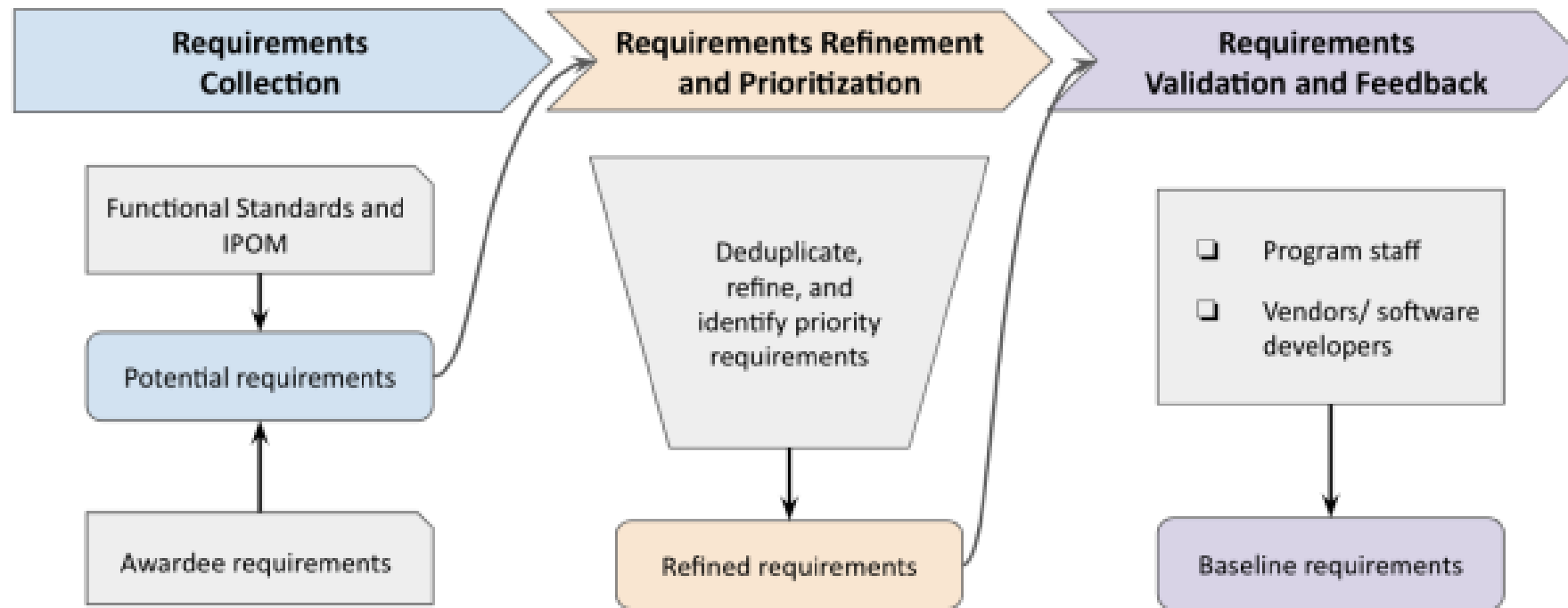


Suggested Activity: Compare IIS capabilities with the Immunization Information System (IIS) Baseline [Requirements Traceability Matrix \(RTM\)](#) and develop a plan to evaluate and prioritize differences.



Measure (Compliance): The IIS has a documented list of gaps between current IIS capabilities and the IIS RTM, a prioritized list of enhancements, and a timeline for implementing the enhancements.

RTM Development Process



The IIS Functional Model provides a framework for the individual RTM requirements



Immunization Information System (IIS) Functional Model

The IIS Functional Model presents a framework and terminology for conveying and communicating the core functions, capabilities and attributes of IIS. These systems, whether as a single integrated IIS or as a set of interoperable modules, support public health immunization programs in achieving the **CDC IIS Functional Standards*** and in providing trusted data and information to improve clinical immunization practice, increase vaccination and reduce vaccine-preventable disease.

The model also serves as a companion and index to the **IIS Baseline Requirements Traceability Matrix (RTM)**, which provides detailed requirements across IIS functions, capabilities and attributes. The RTM and other requirements tools can be found at phii.org/iis-requirements.

IIS Core Functions and Capabilities

These functions and capabilities represent core functionality of IIS. Refer to the **IIS Baseline RTM** for descriptions and functional requirements associated with each.

Administer System	Manage Organizations & Facilities	Manage Users
<ul style="list-style-type: none"> Hierarchy configuration System configuration User roles & permissions System alerts 	<ul style="list-style-type: none"> Organization/facility search Add, edit, inactivate organization/facility VFC/vaccine program enrollment Organization/facility outreach 	<ul style="list-style-type: none"> User search Add, edit, inactivate user Authentication & authorization Password management
Support Interoperability	Ensure Data Quality	Evaluate & Forecast
<ul style="list-style-type: none"> Onboarding Interfaces Data exchange 	<ul style="list-style-type: none"> Patient matching & deduplication Vaccination event matching & deduplication 	<ul style="list-style-type: none"> Clinical decision support Reminder/recall Coverage reports
Manage Patient & Immunization Records	Manage Vaccine Inventory	Provide Data Access
<ul style="list-style-type: none"> Patient search Add, edit patient demographics Patient status Patient consent Add, edit patient immunization Print/export record Mass vaccination 	<ul style="list-style-type: none"> Vaccine inventory search Add, edit vaccine inventory Vaccine ordering Review/approve order Vaccine decrementing Vaccine inventory reconciliation Vaccine transfer Vaccine wastage Vaccine expiration 	<ul style="list-style-type: none"> Standard reports Print/export reports Ad hoc queries & reports Consumer access

IIS Attributes

These attributes represent the technical characteristics of an IIS necessary to support immunization programs and stakeholders. Refer to the **IIS Baseline RTM** for descriptions and non-functional requirements associated with each.

Performance Efficiency	Usability	Reliability	Security	Maintainability	Portability
<ul style="list-style-type: none"> Time behavior Resource utilization Capacity 	<ul style="list-style-type: none"> Operability User error protection Accessibility 	<ul style="list-style-type: none"> Availability Fault tolerance Recoverability 	<ul style="list-style-type: none"> Confidentiality Non-repudiation Accountability Authenticity 	<ul style="list-style-type: none"> Analyzability 	<ul style="list-style-type: none"> Adaptability Installability

* <https://www.cdc.gov/vaccines/programs/iis/func-stds.html>

This resource was developed by the Public Health Informatics Institute in 2020, in collaboration with AIRA and CDC, with financial support from CDC under Cooperative Agreement number 6- NU3B0T000316. Questions, comments and suggestions are welcomed at phii.org/iiscontact.

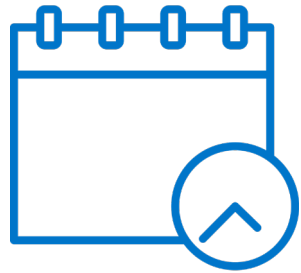
RTM live demo



Additions to the RTM



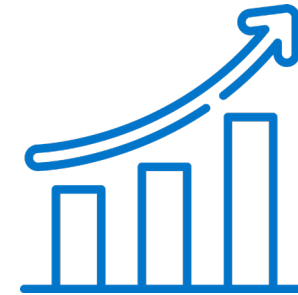
**Vaccine
redistribution**



**View/schedule
vaccine
appointments**



**Transfer vaccine
without
pre-approval**



**Public
dashboards**



**Verifiable digital
vaccine
credential**



Questions?

Contact us at iis@phii.org!



THANK YOU.

Danielle Sill – dsill@phii.org

Marietta (Beth) Cox – nhy7@cdc.gov



PHII.org