



Marrying GIS, SVI, and IIS Information for Data-driven Provider Outreach

Parisa Bozorgi, PhD, GIS Manager, OIT

McColloch Salehi, LMSW, Vaccine Program Recruiter

South Carolina Department of Health and Environmental Control

Healthy People. Healthy Communities.



Vaccines For Children (VFC) Program

Information for Healthcare Providers

VFC will benefit your patients and your practice!

The VFC program provides all routine vaccines recommended by the Advisory Committee on Immunization Practices (ACIP) at no cost to the participating healthcare provider.

Benefits of the VFC program

Being a VFC provider is a sound investment in your practice and patients. It reduces your up-front costs because you will not have to pay to purchase vaccines for VFC-eligible children. Also, you can charge an administrative fee to offset your costs of doing business. Your patients benefit because they won't have to go somewhere else to get the vaccines they need.

The VFC program will:

- Keep your patients in their medical home
- Reduce your up-front costs
- Help provide quality care to vulnerable children and adolescents

VFC Eligibility

Patients are eligible until they turn 19, if they meet one or more of the following criteria:

- Medicaid-eligible
- Uninsured
- American Indian or Alaska Native (AI/AN)

- Underinsured (Underinsured children can only be vaccinated at a Federally Qualified Health Center [FQHC] or Rural Health Center [RHC])

Becoming a VFC provider

You don't have to be a Medicaid provider to participate in VFC. Any healthcare provider authorized by their state to prescribe vaccines can be a VFC provider.

- Contact the VFC Operations Manager or Immunization Vaccine Program Recruiter to request enrollment. You may send an email request to scvfc@dhec.sc.gov to request an enrollment packet.
- Request a SIMON user account: simon.dhec.sc.gov/simon/Login.aspx. If your provider site has never given immunizations, you will also need to request a provider account: simon-qa.dhec.sc.gov/simon_qa/Login.aspx.
- Once you have completed and returned enrollment forms, prepare for a site visit to go over the program's administrative requirements and proper storage and handling of vaccines.

What does "Underinsured" mean?

Underinsured means your patient has health insurance, but it won't cover the vaccine(s) because the insurance:

- Doesn't cover any vaccines.
- Doesn't cover certain vaccines.
- Covers vaccines, but it has a fixed dollar limit or cap for vaccines. Once that fixed dollar amount has been reached, your patient becomes eligible for VFC vaccines.



The Vaccines for Children (VFC) program is a federal initiative, created in 1993 and made operational in 1994, designed to help ensure equitable vaccine access for eligible children through their 18th year of life.

- Medicaid-eligible
- Uninsured
- American Indian or Alaska Native
- Underinsured (FQHC or RHC)

Jurisdictions executing the program are charged with recruiting, enrolling, and maintaining a network of providers to offer vaccination services using VFC program-provided vaccine.

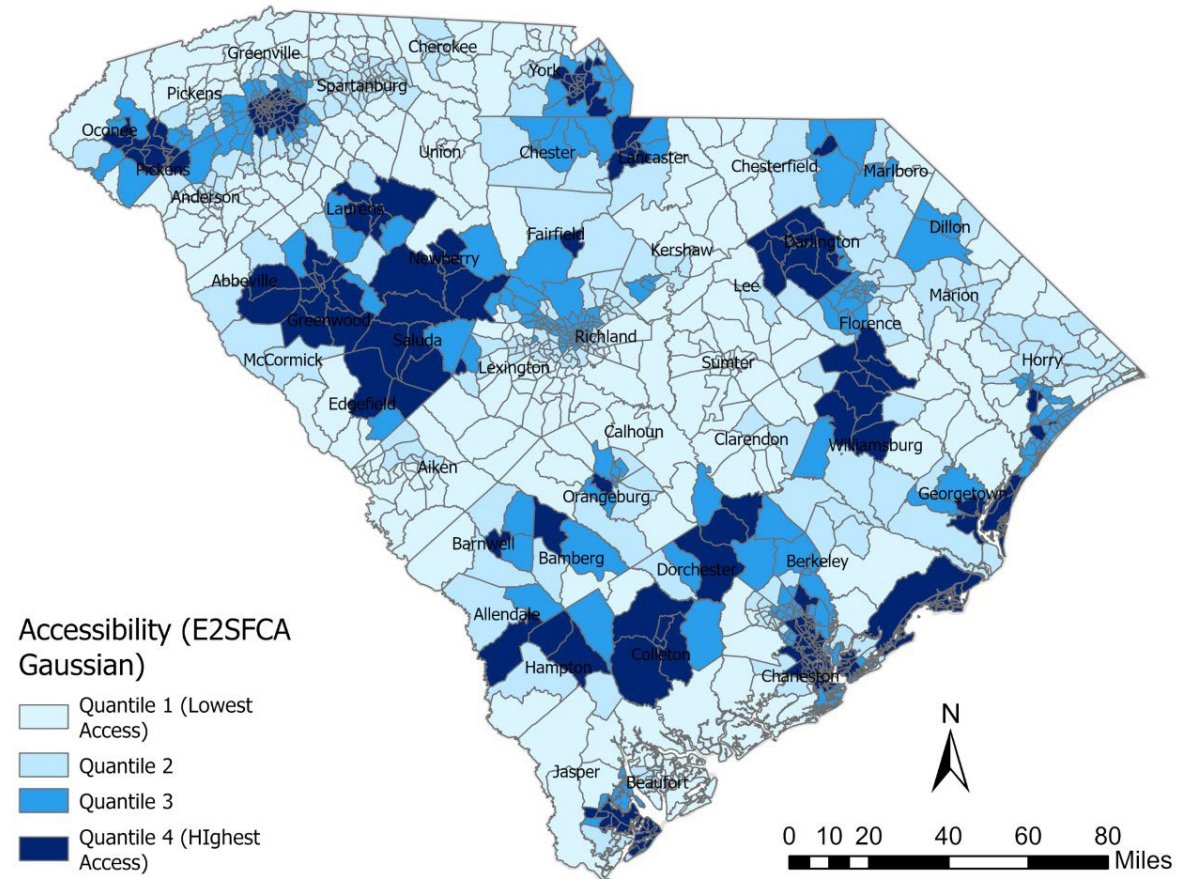


Marrying GIS, SVI and IIS Information

- Geographic Information System (GIS)
- Social Vulnerability Index (SVI)
- Immunization Information System (IIS)

Enhanced two-step floating catchment area (E2SFCA)

- Size of eligible population
- Location of eligible population
- Physical proximity to current VFC providers



Marrying GIS, SVI and IIS Information

- Geographic Information System (GIS) 
- Social Vulnerability Index (SVI)
- Immunization Information System (IIS)

- **Social Vulnerability** refers to the resilience of communities (the ability to survive and thrive) when confronted by external stresses on human health, stresses such as natural or human-caused disasters, or disease outbreaks. Reducing social vulnerability can decrease both human suffering and economic loss.

*-At a Glance: CDC/ASTDR
Social Vulnerability Index*

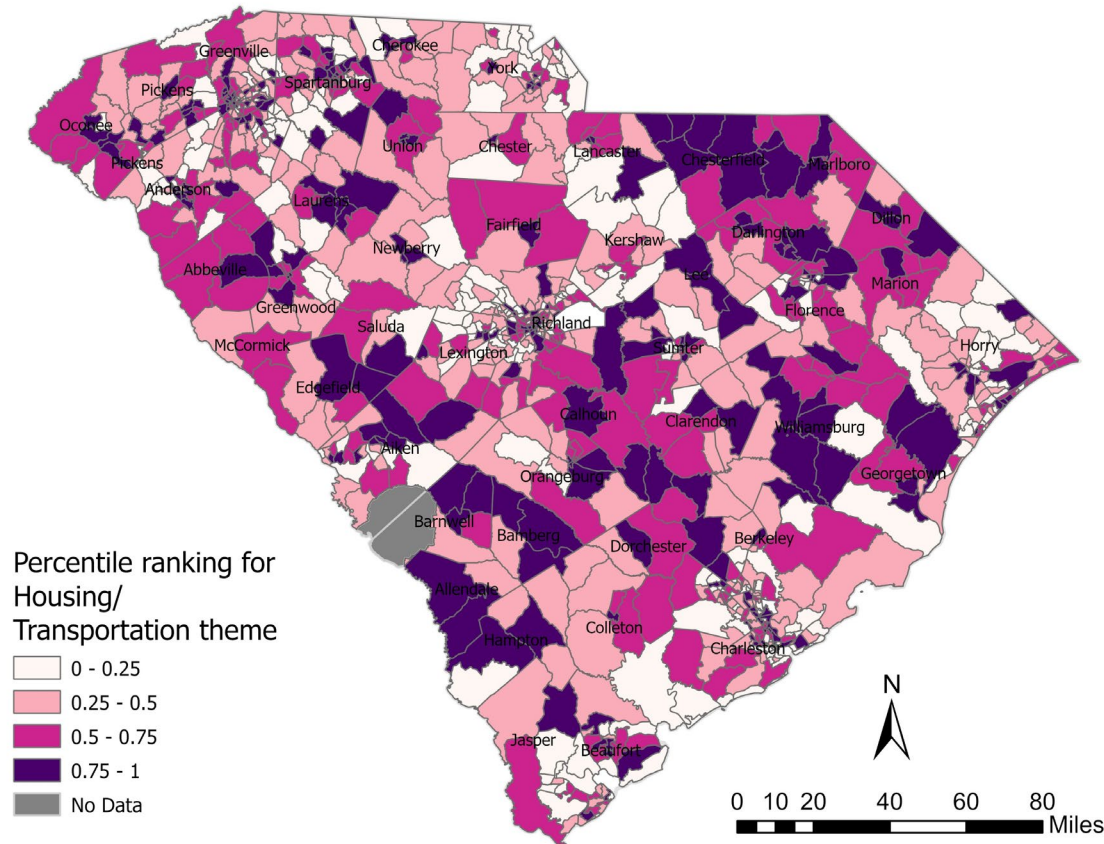
CDC/ATSDR SVI Themes & Social Factors

- Socioeconomic status
 - below poverty, unemployed, income, no high school diploma
- Household composition & disability
 - aged 65 or older, aged 17 or younger, older than age 5 with a disability, single-parent households
- Minority status & language
 - minority, speak English "less than well"
- Housing type & transportation
 - multi-unit structures, mobile homes, crowding, no vehicle, group quarters

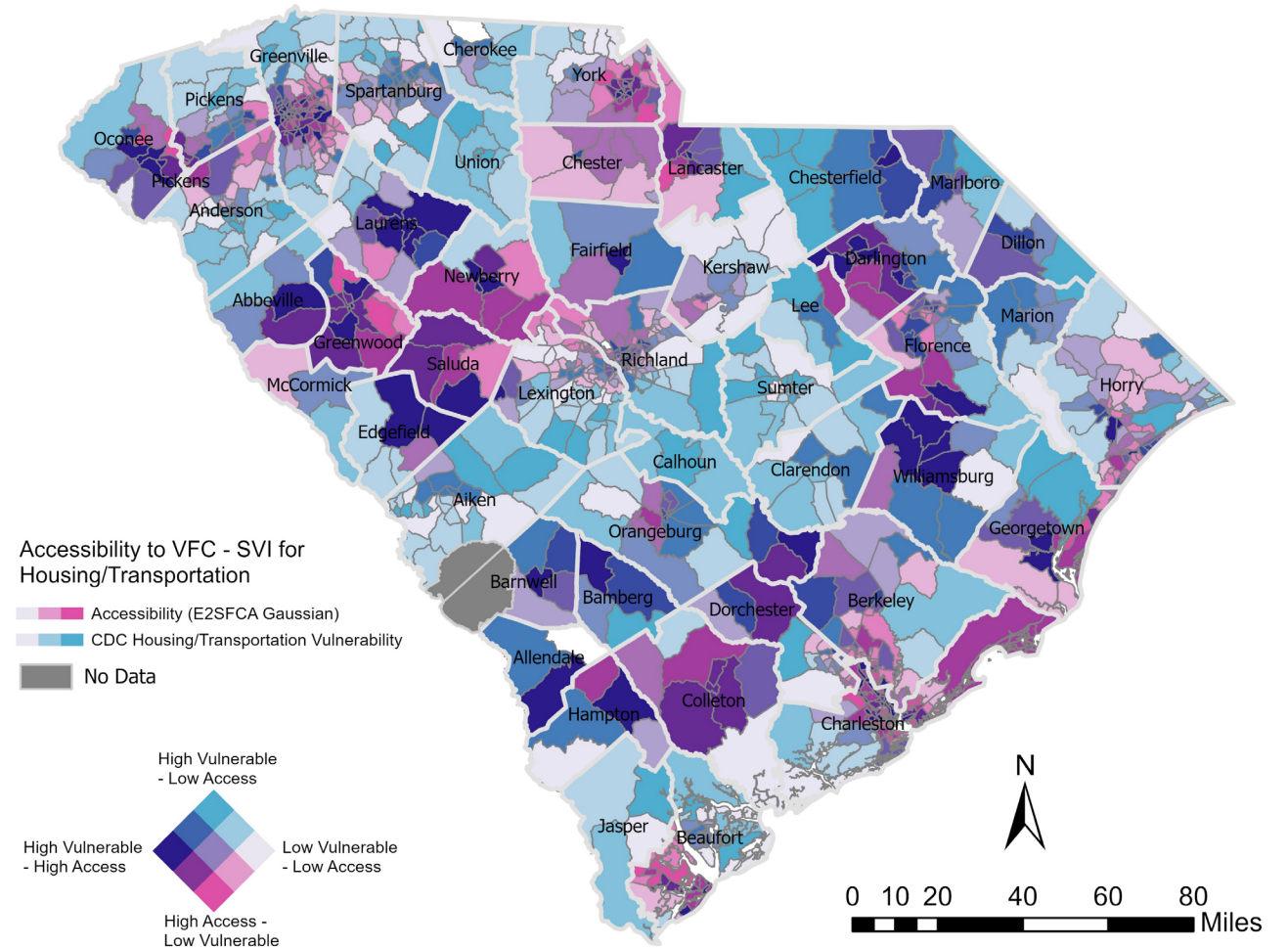
-At a Glance: CDC/ASTDR Social Vulnerability Index



Transportation SVI



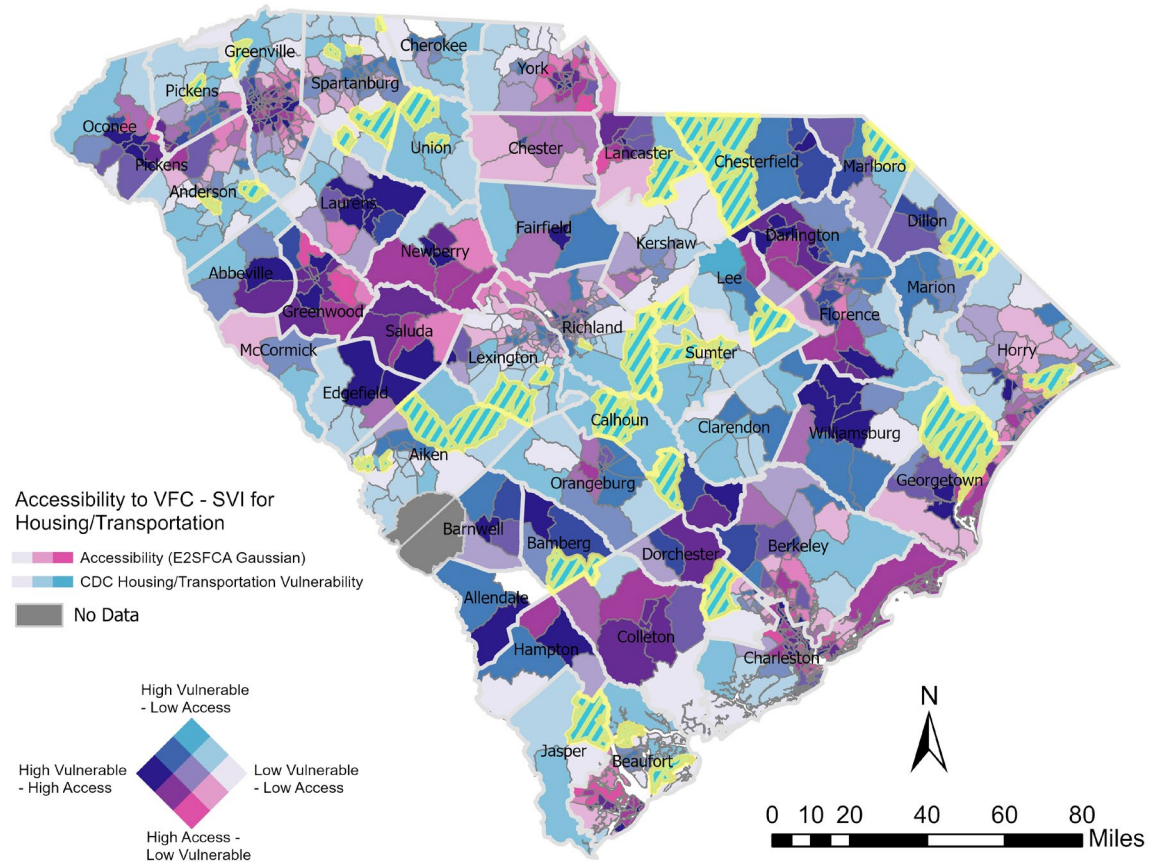
- Size of eligible population
- Location of eligible population
- Physical proximity to current VFC providers
- Transportation SVI





South Carolina Department of Health and Environmental Control

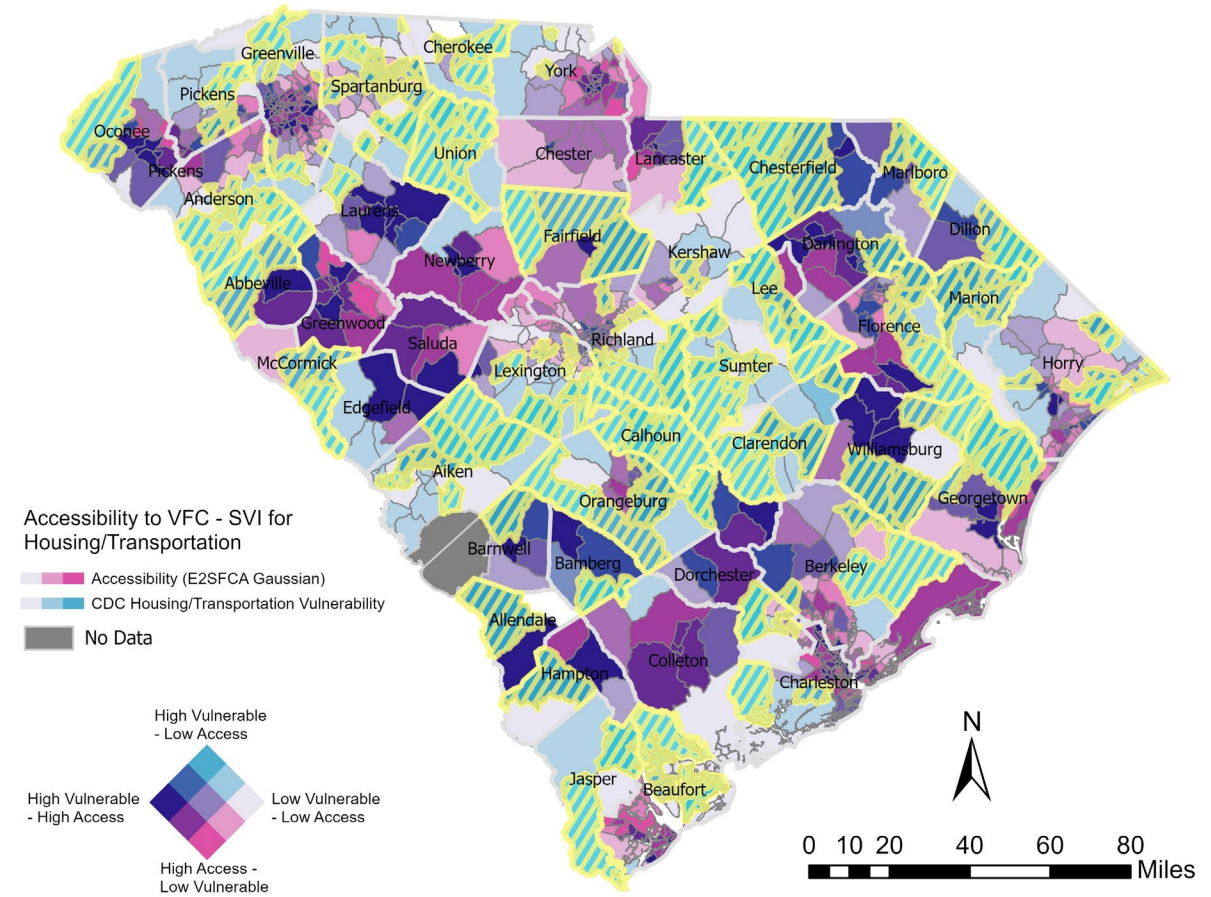
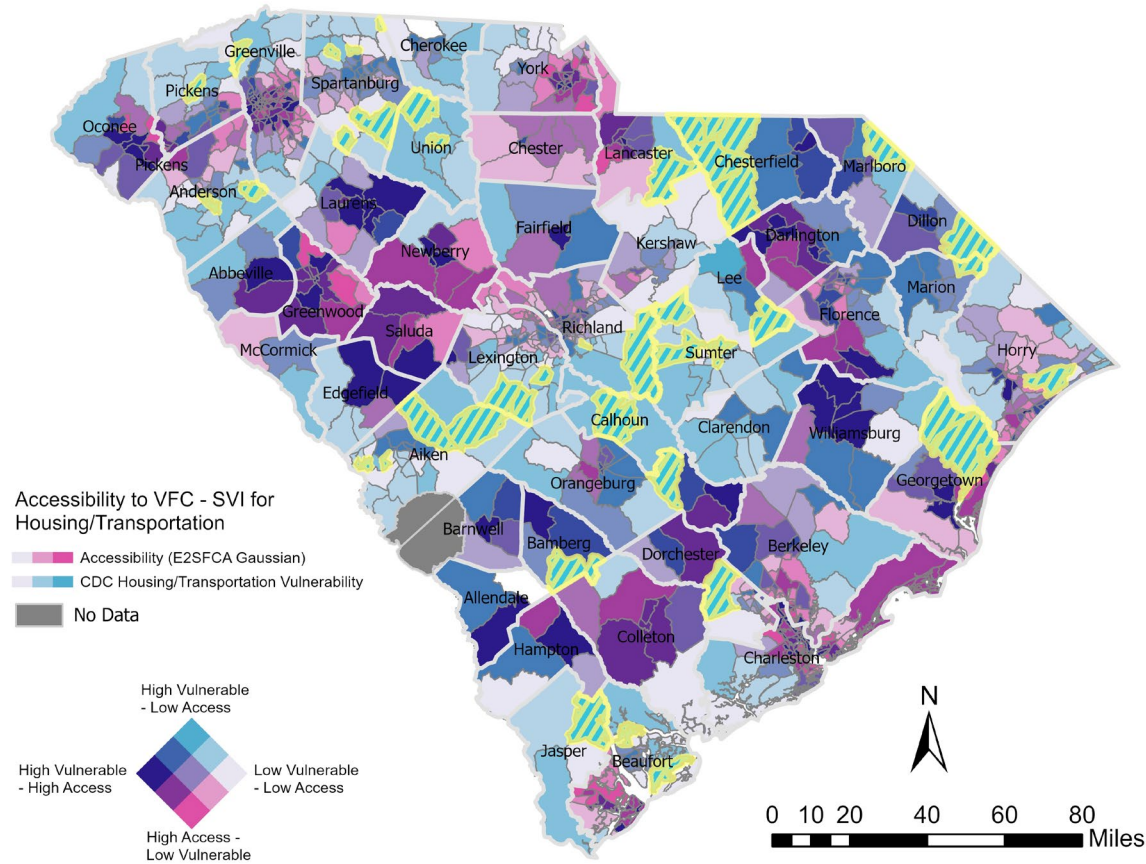
Healthy People. Healthy Communities.



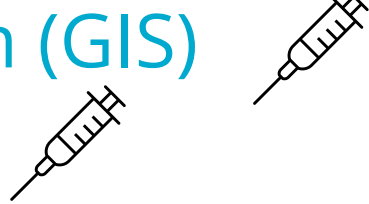


South Carolina Department of Health and Environmental Control

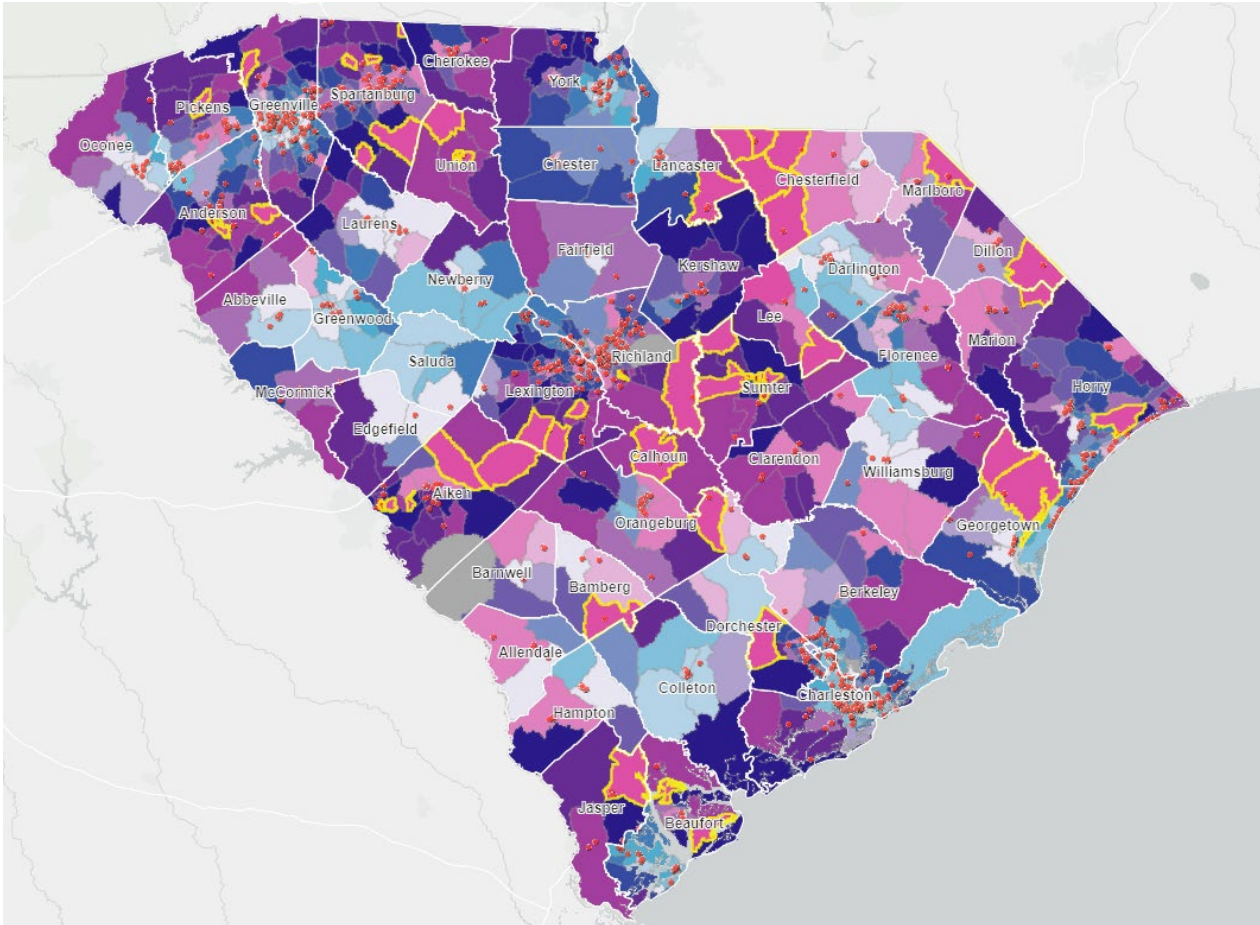
Healthy People. Healthy Communities.



Marrying GIS, SVI and IIS Information

- Geographic Information System (GIS)
 - Social Vulnerability Index (SVI)
 - Immunization Information System (IIS)
- 
- Three syringe icons are positioned to the right of the list items. One syringe is aligned with the first item (GIS), one with the second (SVI), and one with the third (IIS).

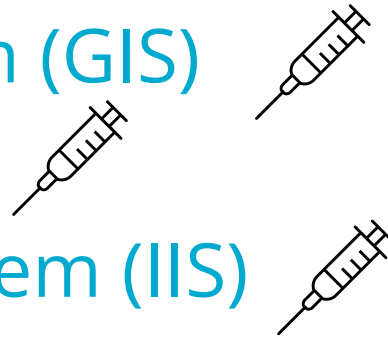
IIS Data: Who is immunizing but not enrolled?



IIS data pull of providers
immunizing in the state
-current VFC providers
=Potential providers

Marrying GIS, SVI and IIS Information

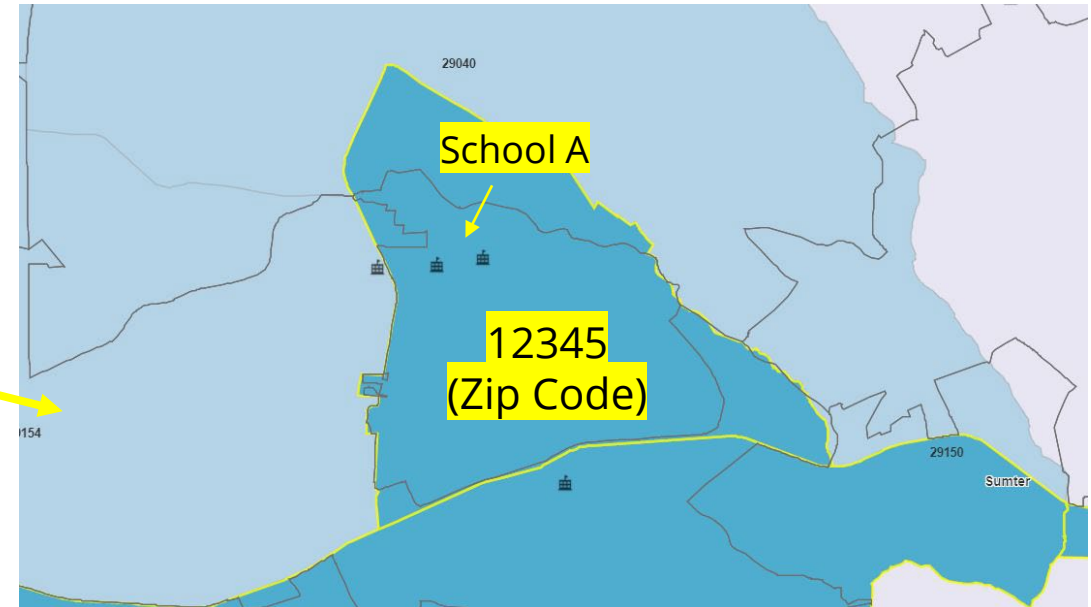
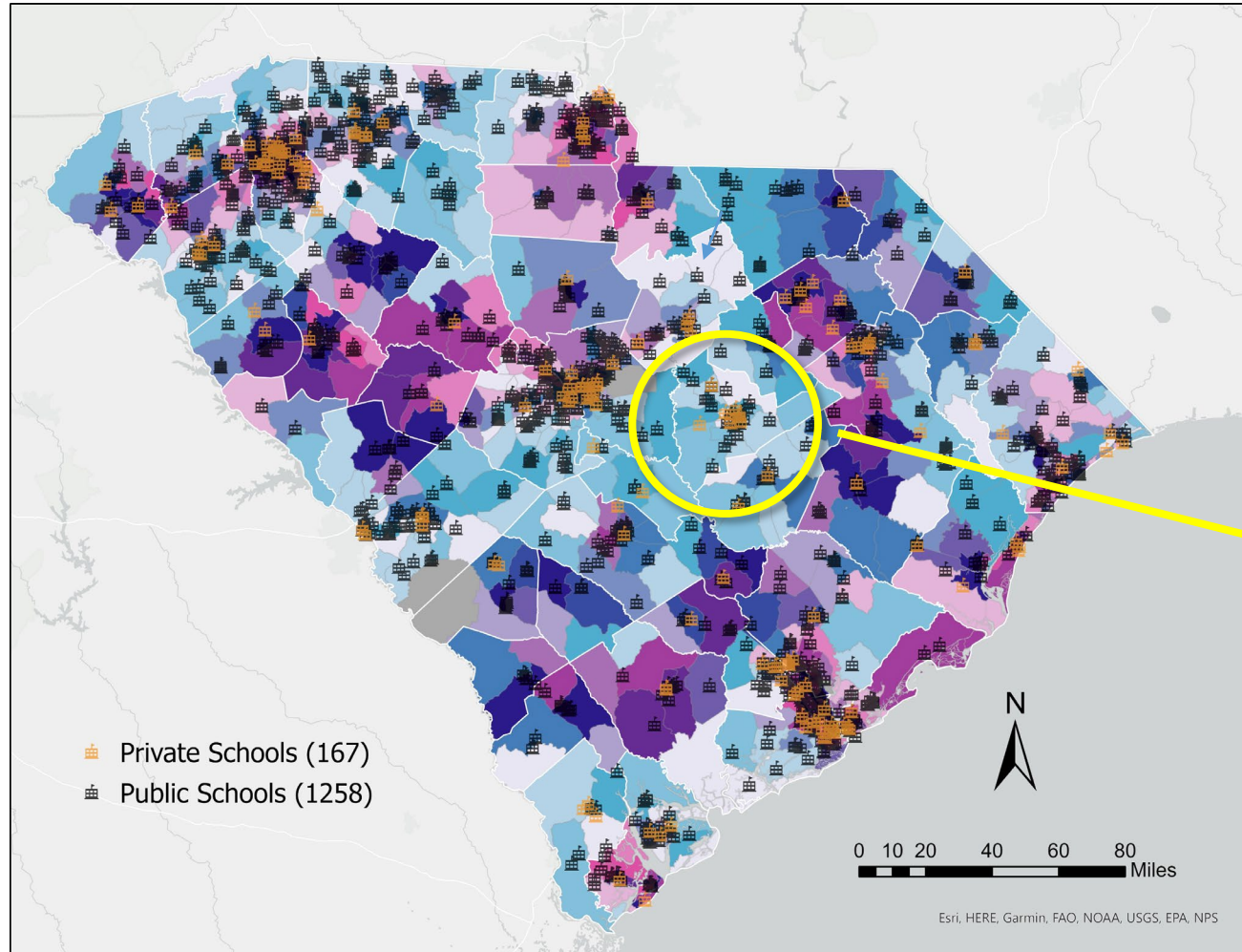
- Geographic Information System (GIS)
- Social Vulnerability Index (SVI)
- Immunization Information System (IIS)





South Carolina Department of Health and Environmental Control

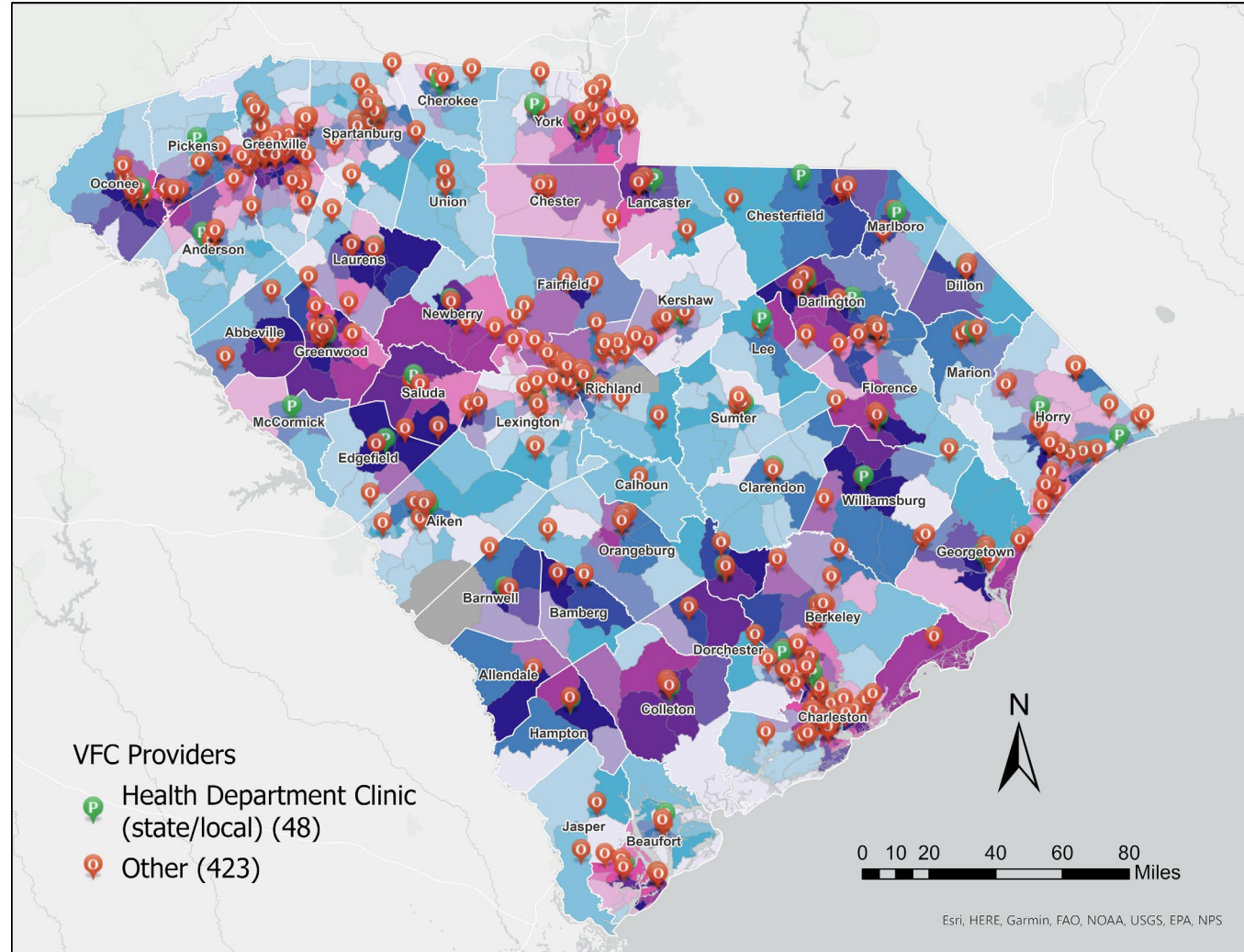
Healthy People. Healthy Communities.





South Carolina Department of Health and Environmental Control

Healthy People. Healthy Communities.





South Carolina Department of Health and Environmental Control
Healthy People. Healthy Communities.

CONTACT US

McColloch Salehi
Vaccine Program Recruiter, *Immunizations Division*
salehims@dhec.sc.gov

Parisa Bozorgi
GIS Manager, *Office of Information Technology*
bozorgp@dhec.sc.gov

Stay Connected



scdhec



@scdhec



blog.scdhec.gov



scdhec



S.C. Department of Health
and Environmental Control