

# Overview: Influenza and Routine Vaccination Administration Reporting

LaTreace Harris (CDC), Nkenge Jones-Jack (CDC), Paul Klintworth (CDC), and Lauren Shaw (CDC)



May 3, 2023

# Vaccination Data Submission Frequency

- ✓ **Routine Vaccination Data Values** for jurisdictions with a signed DUA, including **all demographic and vaccination records reported to the registry**, are **reported on a quarterly basis**.
- ✓ **Aggregate Influenza Vaccination Data Values** for jurisdictions with a signed DUA are **reported on a monthly basis**.

## Current Data Specifications

*Quarterly  
Routine Vaccination Data*

**Version 13 of Appendix C and D**

*Monthly  
Aggregate Influenza Vaccination Data*

**Version 11 of Appendix B**

# Routine and Influenza Vaccination – Key Metrics and Summary

DUA Signature Status (updated: 4/21/23)			
Signed as Intended	Signed with Changes	In Progress (redlines)	Not Signed
43	6	3	18

Monthly Influenza Data Submissions (updated: 4/21/23)				
Jurisdictions	Dec Data Submitted Jan	Jan Data Submitted Feb	Feb Data Submitted Mar	Mar Data Submitted Apr
	Total	Total	Total	Total
Expected to Submit <sup>1</sup>	25	27	31	34
Submitted	9	23	25	32

<sup>1</sup>Expected to submit means signed DUA and onboarded to a submission mechanism.

<sup>2</sup>PPRL is paused pending contract finalization. Expected PPRL contract to be in place in May 2023.

<sup>3</sup>In future iterations, this can be used to denote number of jurisdictions using the aggregate quarterly specification.

Quarterly Routine Data Submissions Metrics (updated: 4/21/23 )				
Data Submission	Q4 2022 Data Submitted Jan	Q1 2023 Data Submitted Apr	Q2 2023 Data Submitted Jul	Q3 2023 Data Submitted Oct
Jurisdictions Expected to Submit	25	29	-	-
Jurisdictions Submitted	15	6	-	-
Jurisdictions Submitting to PPRL <sup>2</sup>			-	-

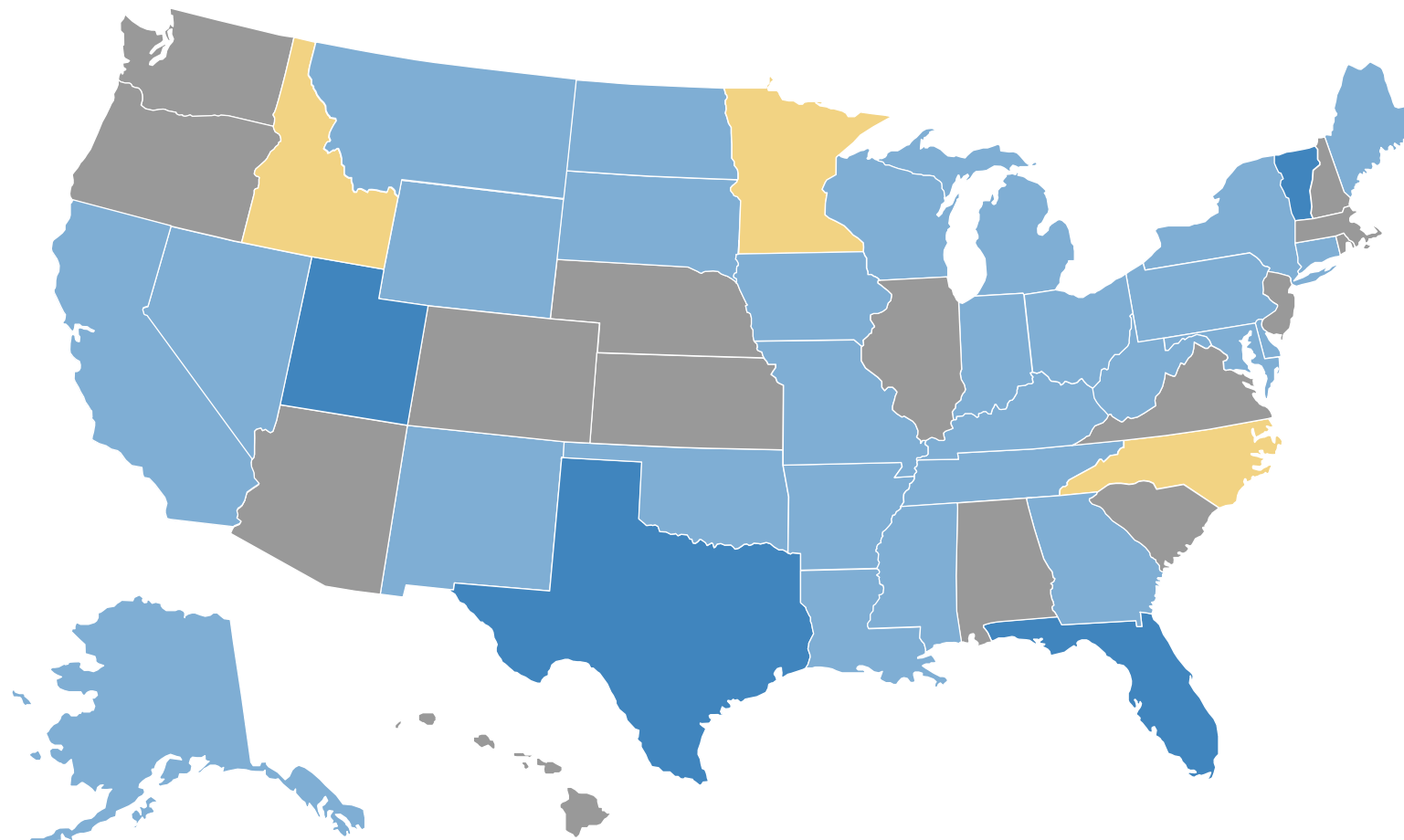
## Notes and Trends

- Key themes in redlines: full data of birth (DOB), county
- DUA signature blockers: policy (SC & MA), Privacy Preserving Record Linkage (PPRL) questions, data use questions/concerns
- An aggregate quarterly specification is currently in progress (will impact TX and possibly ID)

# Data Use Agreement Signature Status (N=64)

Jurisdictions Not Depicted

- American Samoa
- Chicago\*
- Guam
- Houston\*
- Marshall Islands
- Micronesia
- Northern Mariana Islands
- NYC
- Palau
- Philadelphia
- Puerto Rico
- San Antonio\*
- USVI
- Washington DC



Signed as intended (n=43)

Signed with changes (n=6)

In process (redlines) (n=3)

Not signed (n=18)

\*These cities are covered under their state DUA

# The Rationale Behind Data Submission

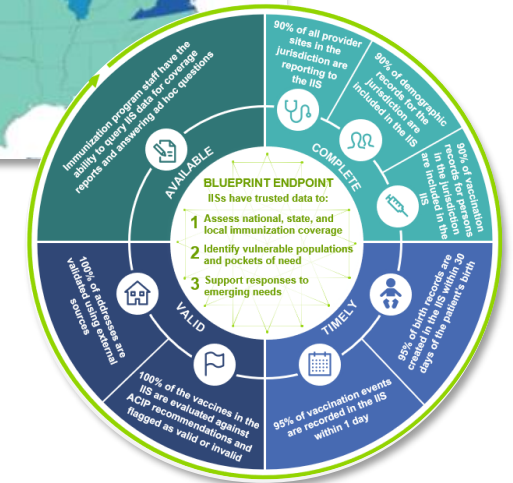
*Public Health Data Goal:  
Strengthen the Core of  
Public Health Data*

Building on the COVID-19 pandemic, we seek ***to understand*** the following important public health issues at the national level:

- Vaccination coverage at the national and jurisdiction level
- Areas of low vaccination coverage
- Populations at risk of vaccine preventable disease
- Characteristics of populations with high/low coverage
- Quality of IIS data (available, timely, complete, valid, accurate, consistent, unique)

Additional benefits:

- The effort takes advantage of data exchange infrastructure awardees are already using (IZ Gateway, CC4)
- CDC will provide regular feedback to help jurisdictions continue in their data quality improvement efforts



# Reviewing the Systems for Routine and Influenza Vaccination Data Submission

## Secure FTP (SFTP)

The secure file transfer platform enables encrypted file sharing from jurisdictions to CDC.

### Quick Facts:

- SFTP is the **short-term solution**
- A login and password are required to access the secure FTP site

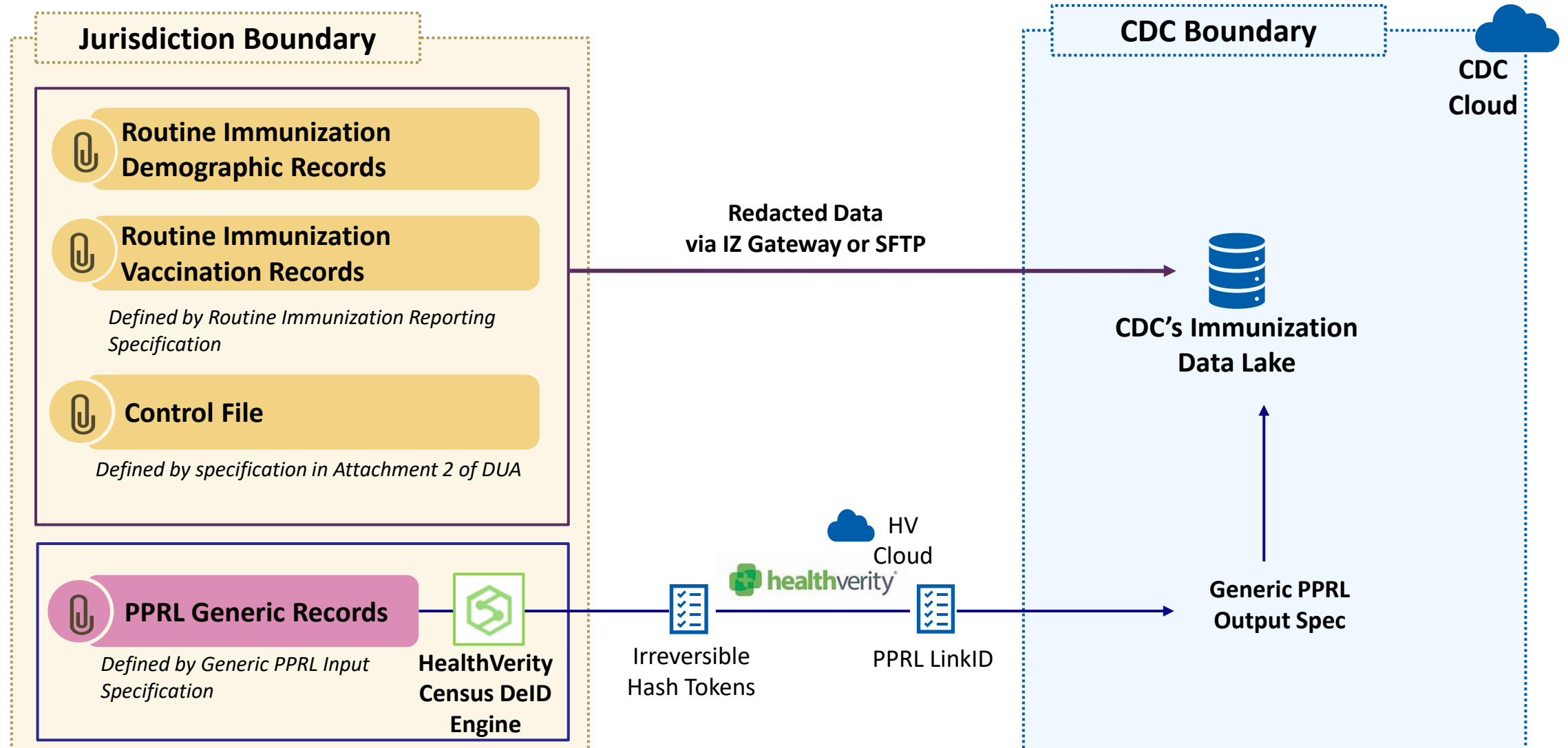
## IZ Gateway

A cloud-based message routing service intended to enable data exchange between IISs, other provider systems, and the Immunization Data Lake (IZDL).

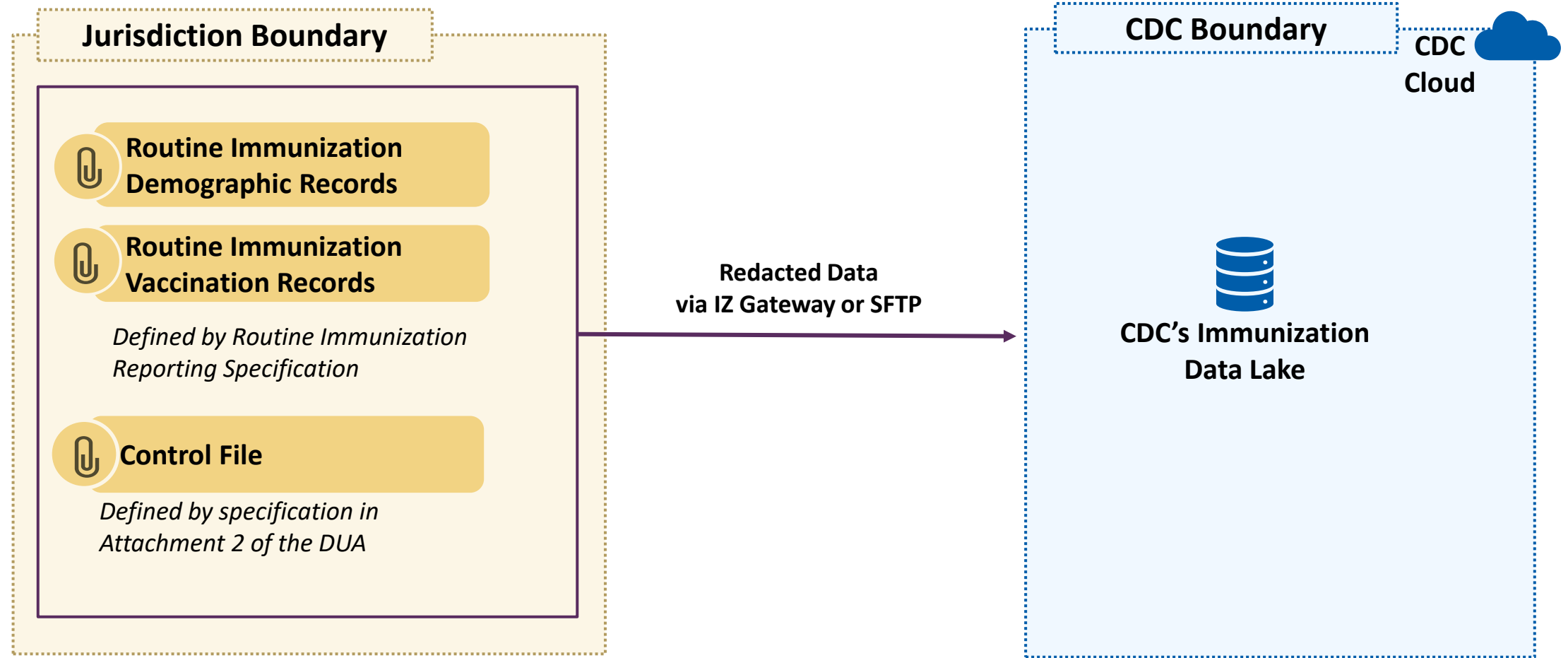
### Quick Facts:

- IZ Gateway is the **long-term solution**
- Enables centralized data exchange and eliminate the need for multiple, individual, point-to-point connections
- Seven awardees are currently enrolled in a pilot program

# Routine Vaccination Data Submission Process



# Routine Vaccination Data Submission Without PPRL





# How to Submit Influenza Data

# Monthly Influenza Submission Template Review

			# Persons who received 1+ flu dose, by age group										
Flu Season	Month	Vax date	6 months-23 months	2-4 years	5-8 years	9-12 years	13-17 years	18-49 years	50-64 years	65+ years	6 months to 17 years	All adults (+18)	Overall (all ages)
2020-21			DOB range: 1/1/2020-7/1/2019	DOB range: 7/1/2018-7/1/2016	DOB range: 7/1/2015-7/1/2012	DOB range: 7/1/2011-7/1/2008	DOB range: 7/1/2007-7/1/2003	DOB range: 7/1/2002-7/1/1971	DOB range: 7/1/1970-7/1/1956	DOB <= 7/1/1955	DOB range: 1/1/2020-7/1/2003	DOB <= 7/1/2002	DOB <= 1/1/2020
	Jul	7/1/2020-7/31/2020											
	Aug	7/1/2020-8/31/2020											
	Sept	7/1/2020-9/30/2020											
	Oct	7/1/2020-10/31/2020											
	Nov	7/1/2020-11/30/2020											
	Dec	7/1/2020-12/31/2020											
	Jan	7/1/2020-1/31/2021											
	Feb	7/1/2020-2/28/2021											
	Mar	7/1/2020-3/31/2021											
	Apr	7/1/2020-4/30/2021											
	May	7/1/2020-5/31/2021											
	June	7/1/2020-6/30/2021											
2021-22			DOB range: 1/1/2021-7/1/2020	DOB range: 7/1/2019-7/1/2017	DOB range: 7/1/2016-7/1/2013	DOB range: 7/1/2012-7/1/2009	DOB range: 7/1/2008-7/1/2004	DOB range: 7/1/2003-7/1/1972	DOB range: 7/1/1971-7/1/1957	DOB <= 7/1/1956	DOB range: 1/1/2021-7/1/2004	DOB <= 7/1/2003	DOB <= 1/1/2021
	Jul	7/1/2021-7/31/2021											
	Aug	7/1/2021-8/31/2021											
	Sept	7/1/2021-9/30/2021											
	Oct	7/1/2021-10/31/2021											
	Nov	7/1/2021-11/30/2021											
	Dec	7/1/2021-12/31/2021											
	Jan	7/1/2021-1/31/2022											
	Feb	7/1/2021-2/28/2022											
	Mar	7/1/2021-3/31/2022											
	Apr	7/1/2021-4/30/2022											
	May	7/1/2021-5/31/2022											
	June	7/1/2021-6/30/2022											
2022-23			DOB range: 1/1/2022-7/1/2021	DOB range: 7/1/2020-7/1/2018	DOB range: 7/1/2017-7/1/2014	DOB range: 7/1/2013-7/1/2010	DOB range: 7/1/2009-7/1/2005	DOB range: 7/1/2004-7/1/1973	DOB range: 7/1/1972-7/1/1958	DOB <= 7/1/1957	DOB range: 1/1/2022-7/1/2005	DOB <= 7/1/2004	DOB <= 1/1/2022
	Jul	7/1/2022-7/31/2022											
	Aug	7/1/2022-8/31/2022											
	Sept	7/1/2022-9/30/2022											
	Oct	7/1/2022-10/31/2022											
	Nov	7/1/2022-11/30/2022											
	Dec	7/1/2022-12/31/2022											
	Jan	7/1/2022-1/31/2023											
	Feb	7/1/2022-2/28/2023											
	Mar	7/1/2022-3/31/2023											
	Apr	7/1/2022-4/30/2023											
	May	7/1/2022-5/31/2023											
	June	7/1/2022-6/30/2023											

Appendix B: Monthly Influenza Reporting Template

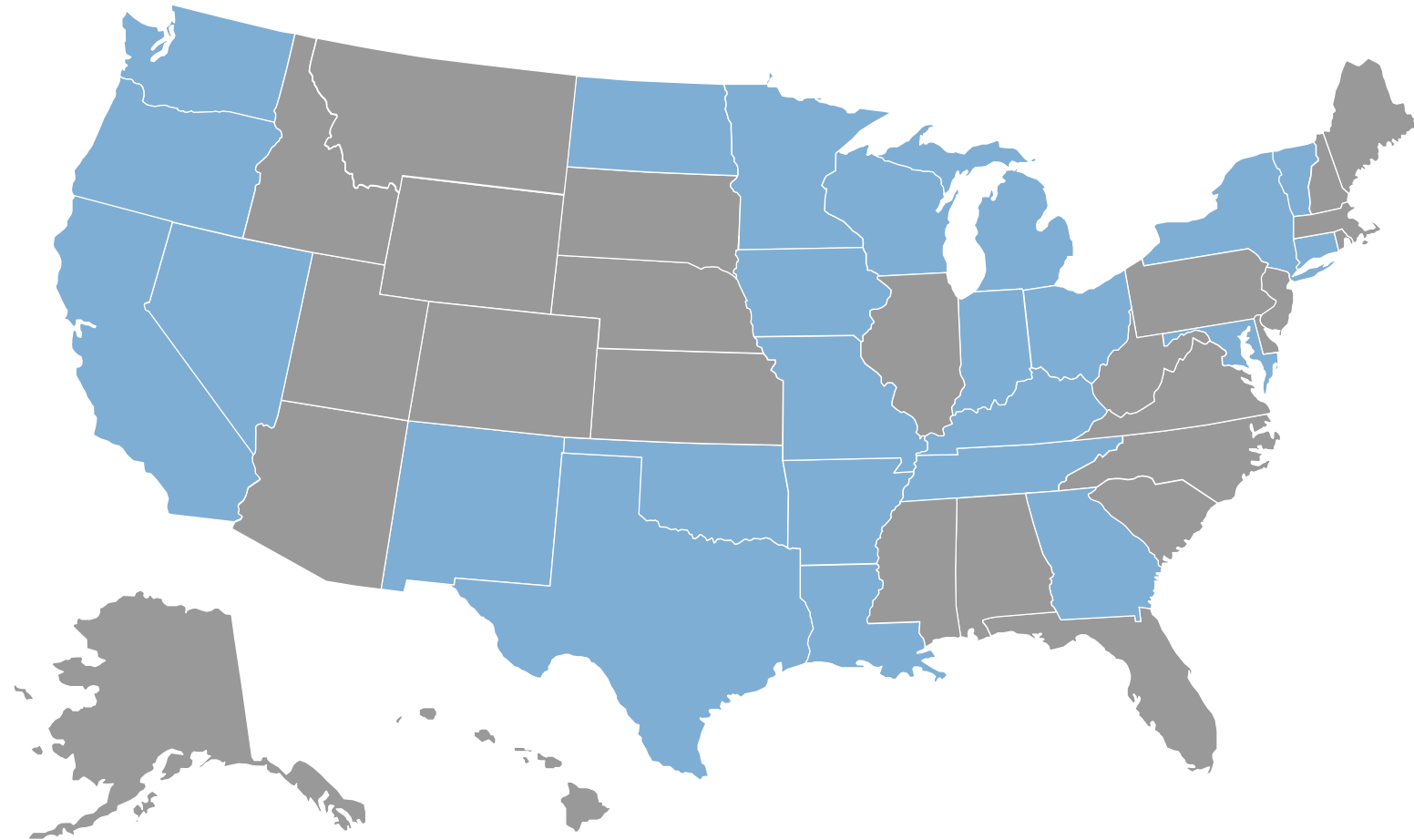
# Monthly Influenza Submission Reminders

- File names should follow this format: **MonthlyFlu\_(three digit state code)\_(applicable yearmonth).xlsx**
  - Example: A February submission from AAA would look like: **MonthlyFlu\_AAA\_2020FEB.xlsx**.
- Both xlsx and xls formats are acceptable
- Do not zip the file
- Cumulative counts with recently updated numbers should be submitted to reflect only the current month within the specific influenza / flu season
  - For example, 7/1-7/31 for July; 7/1-8/31 for August; 7/1-9/30 for September
  - The submission of cumulative counts allows for the inclusion of results from past month results to account for doses reported after the date of the previous month's report
  - You do not need to re-run the past month or past season results

# March 2023 Monthly Influenza Submissions (submitted April 2023)

Jurisdictions Not Depicted

- American Samoa
- Chicago\*
- Guam
- Houston\*
- Marshall Islands
- Micronesia
- Northern Mariana Islands
- NYC
- Palau
- Philadelphia
- Puerto Rico
- San Antonio\*
- USVI
- Washington DC



Submitted (n=28)



Not submitted (n=36)

\*Data from these cities is submitted with state submissions

# Common Influenza Submission Errors

February Errors	# of occurrences in February
Naming Convention of File	5
Reported Numbers are Incorrect	1
Incorrect Template	9
Placed in Wrong Folder	1
Total	16

March Errors	# of occurrences in March
Naming Convention of File	5
Reported Numbers are Incorrect	0
Incorrect Template	0
Placed in Wrong Folder	1
Total	6

# How to Submit Routine Data

# Preparing for Routine Data Submission

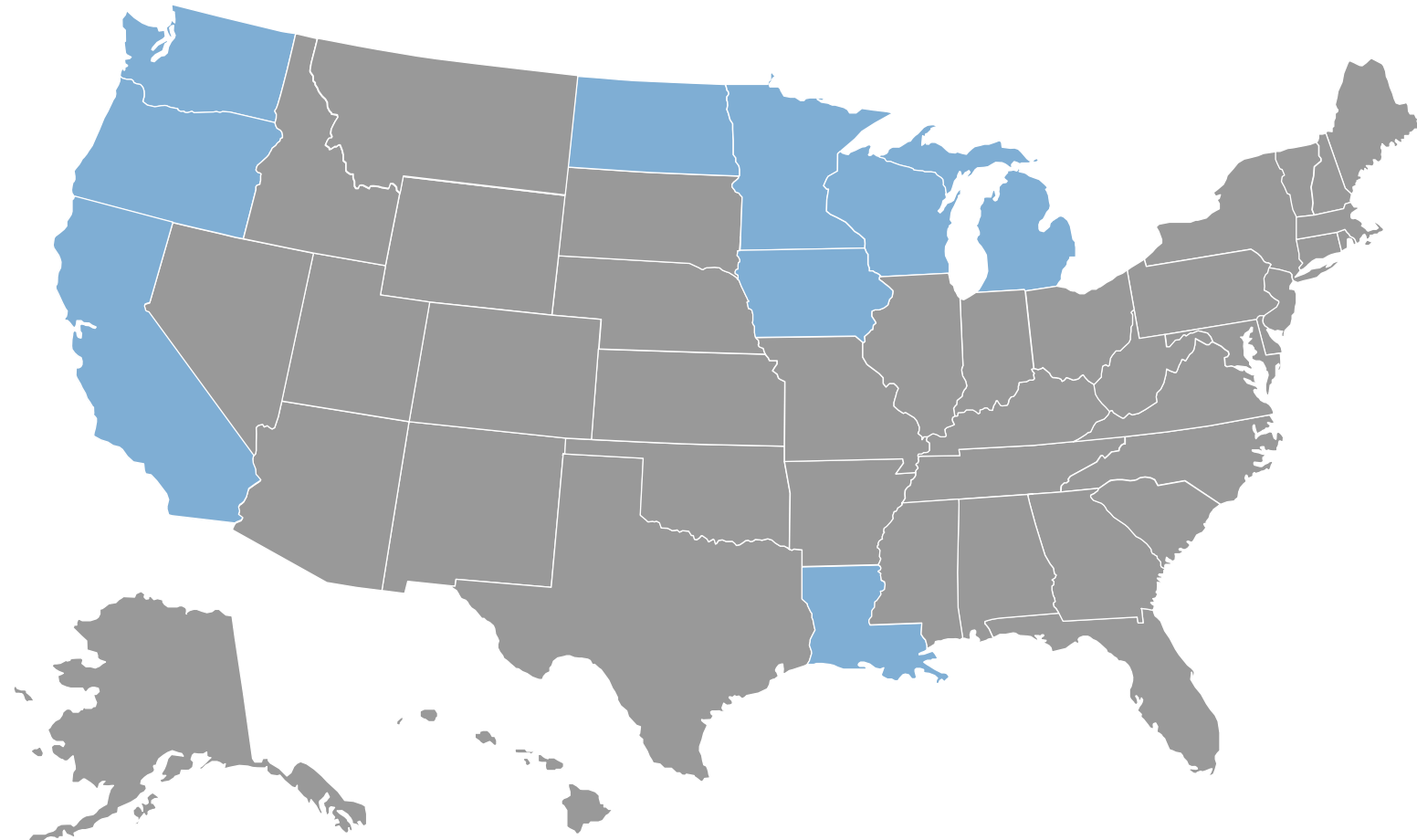
For jurisdictions that **have** signed the Routine and Seasonal Influenza Vaccination Data Use Agreement (DUA)

- ✓ Ensure a Point of Contact (POC) who will oversee the data submission process for your jurisdiction has been identified at the time your DUA is signed
  - Send POC information for your jurisdiction to your IIS SME
- ✓ Confirm your staff who will oversee business processes related to data submission (e.g., preparing test files, preparing production files, troubleshooting, and executing submission)
- ✓ Work with your IIS technology partner to:
  - Create a demographic record file using specifications in Appendix C of the DUA
  - Create a vaccination record file using specifications in Appendix D of the DUA
  - Create a control file using specifications in Attachment 2 of the DUA

# Q4 2022 Quarterly Routine Data Submissions (submitted January 2023)

Jurisdictions Not Depicted

- American Samoa
- Chicago\*
- Guam
- Houston\*
- Marshall Islands
- Micronesia
- Northern Mariana Islands
- NYC
- Palau
- Philadelphia
- Puerto Rico
- San Antonio\*
- USVI
- Washington DC



Submitted (n=10)



Not submitted (n=54)

\*Data from these cities is submitted with state submissions

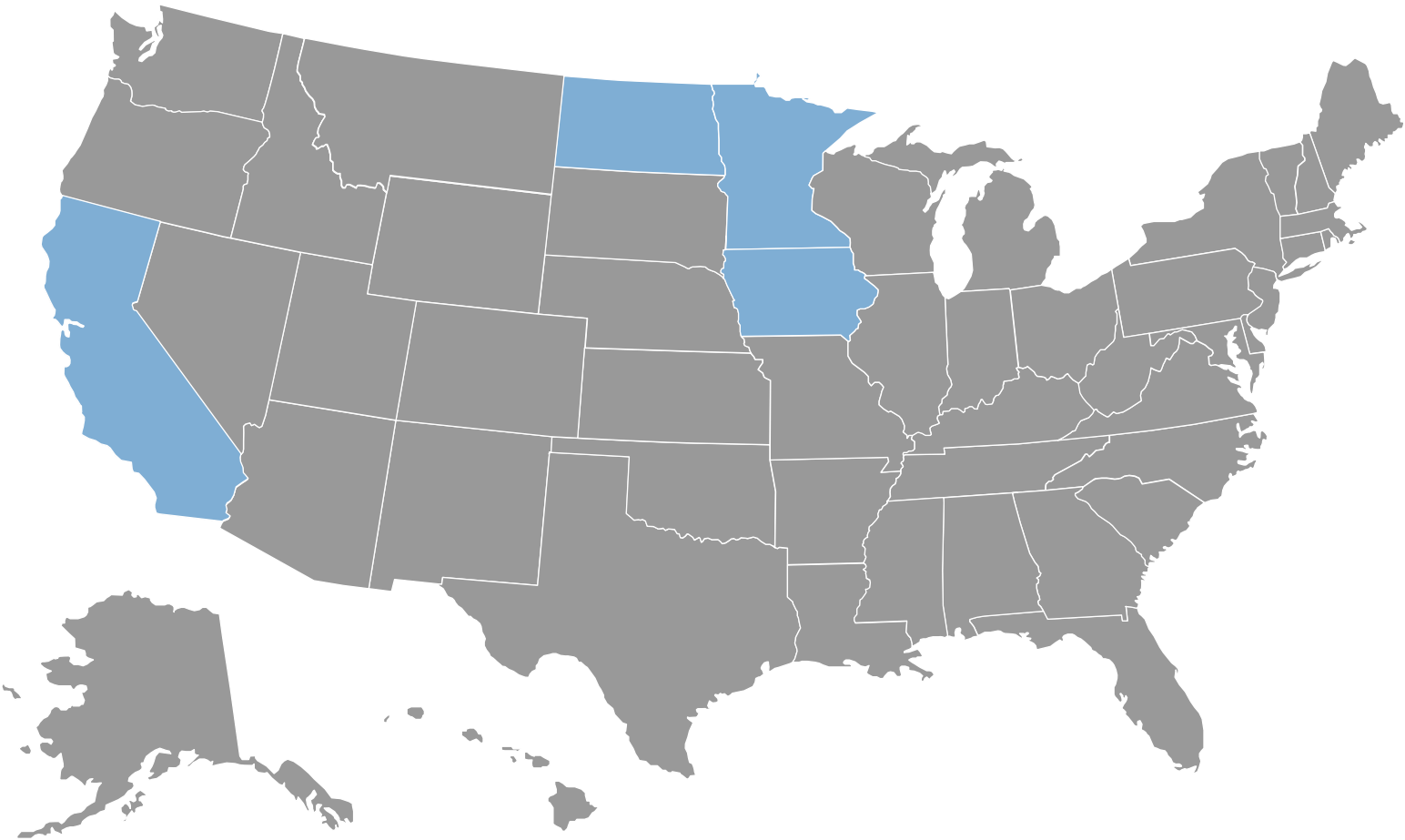


# Q1 2023 Quarterly Routine Data Submissions

## (submitted April 2023\*)

Jurisdictions Not Depicted

- American Samoa
- Chicago\*
- Guam
- Houston\*
- Marshall Islands
- Micronesia
- Northern Mariana Islands
- NYC
- Palau
- Philadelphia
- Puerto Rico
- San Antonio\*
- USVI
- Washington DC



Submitted (n=4)



Not submitted (n=60)

\*Data from these cities is submitted with state submissions

# Next Steps for Data Submission

# Next Steps for Jurisdictions

## Jurisdictions that returned a signed DUA

- ❑ Submit monthly influenza vaccination data
- ❑ Confirm quarterly routine vaccination data submission project wave
- ❑ Begin to prepare for quarterly routine data submission
  - Send contact information for the person who will oversee the data submission process for your jurisdiction
  - Work with your IIS technology partners to:
    - Create a demographic record file using specifications in Appendix C of the DUA
    - Create a vaccination record file using specifications in Appendix D of the DUA
    - Create a control file using specifications in Attachment 2 of the DUA

## Jurisdictions that have not signed their DUA

- ❑ Update your IIS SME on submission of your DUA
- ❑ Work with your IIS SME to address questions hindering you from signing your DUA
- ❑ Confirm that your quarterly routine vaccination data submission project wave is correct

# Next Steps

Jurisdictions that....	Should Plan to...
Submitted data	Continue to do so
Signed their DUA	Start submitting data
Have not signed their DUA	Sign the DUA and start submitting data
Are participating in the IZ Gateway pilot	Submit routine and influenza data via STFP until they can use IZ Gateway

## Next Data Submission Dates

**By May 9** aggregate Influenza data

**By July 31** quarterly routine vaccination data

Contact your IIS SME with any questions.

Thank you for attending!  
Contact [HSInfo@cdc.gov](mailto:HSInfo@cdc.gov) with questions.

For more information, contact CDC  
1-800-CDC-INFO (232-4636)  
TTY: 1-888-232-6348 [www.cdc.gov](http://www.cdc.gov)

The findings and conclusions in this report are those of the authors and do not necessarily represent the official position of the Centers for Disease Control and Prevention.

